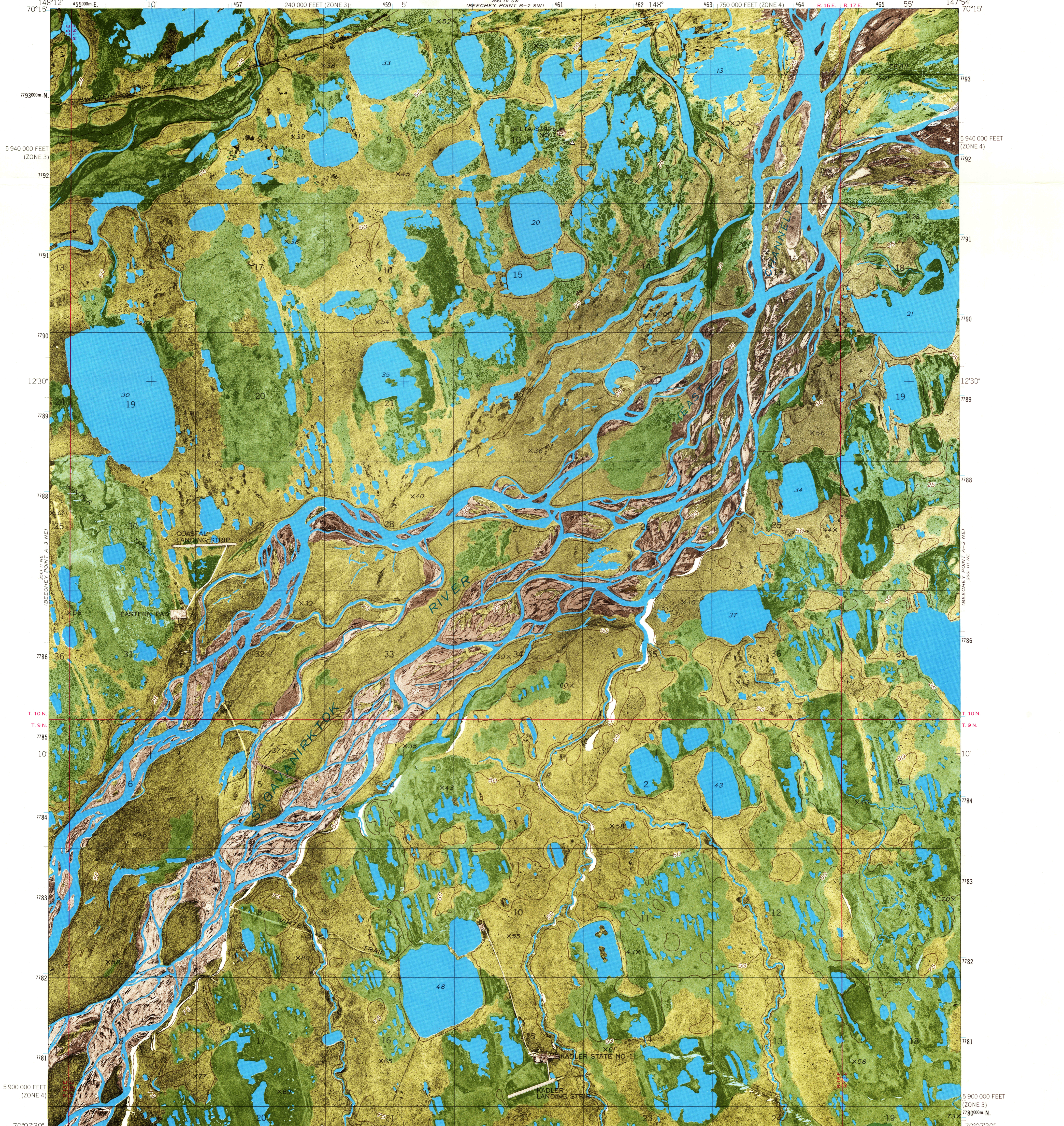
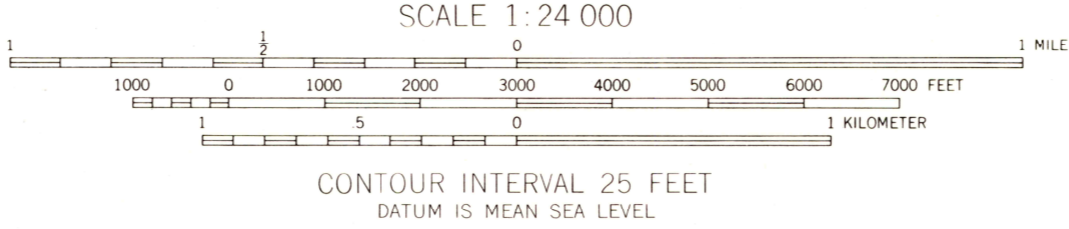
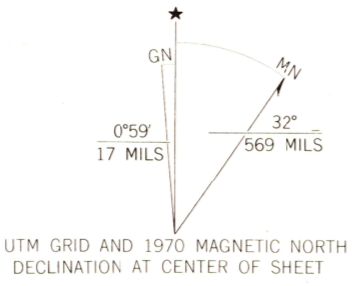


UNITED STATES
DEPARTMENT OF THE INTERIOR
GEOLOGICAL SURVEY

BEECHEY POINT A-2 NW QUADRANGLE
ALASKA
1:24 000 SERIES ORTHOPHOTOMAP (TOPOGRAPHIC)



Maped, edited, and published by the Geological Survey
Control by USC&GS and USCE
Orthophotomap prepared from aerial photograph taken June 26, 1970. Topography from Army Map Service 1:50,000 series maps, surveyed 1955
Universal Transverse Mercator projection.
1927 North American datum
10,000-foot grids based on Alaska coordinate system, zones 4 and 3
1,000-meter Universal Transverse Mercator grid ticks, zone 6, shown in blue
Gray land lines represent unsurveyed and unmarked locations predetermined by the Bureau of Land Management
Folios U-2 and U-3, Umiat Meridian



ROAD CLASSIFICATION

All weather road on gravel fill	Winter trail
---------------------------------	--------------

FOR SALE BY U.S. GEOLOGICAL SURVEY
FAIRBANKS, ALASKA 99701, DENVER, COLORADO 80225, OR WASHINGTON, D.C. 20242
A FOLDER DESCRIBING TOPOGRAPHIC MAPS AND SYMBOLS IS AVAILABLE ON REQUEST

BEECHEY POINT A-2 NW, ALASKA
N7007.5-W14754/7.5X18
1970
AMS 2661 111 NW-SERIES Q801

USGS
Historical File
Topographic Division

61 sq. mi.
U.S.G.S.
FILE COPY
TOPOGRAPHIC DIVISION
1971
JAN 28
2500
HISTORICAL