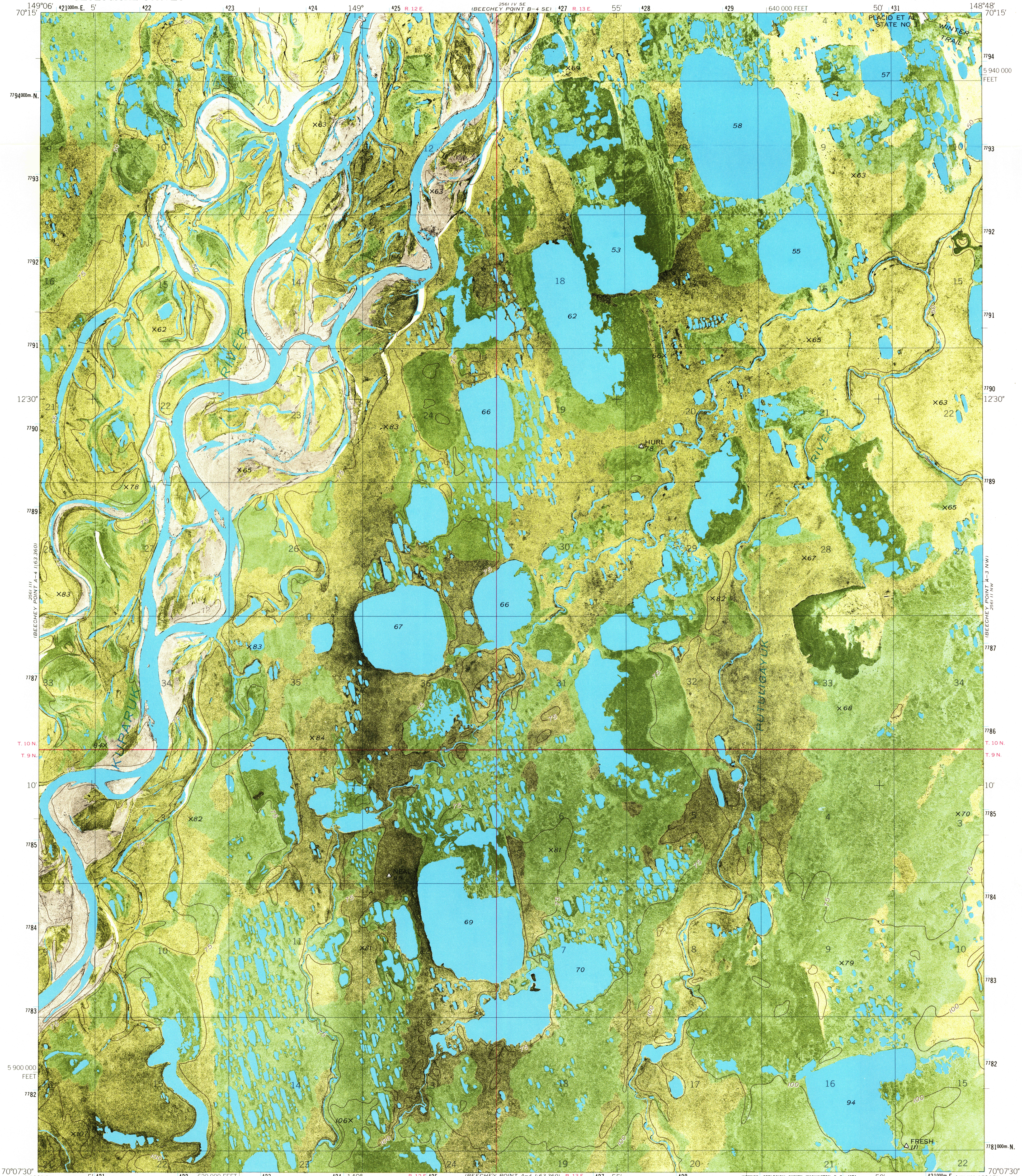


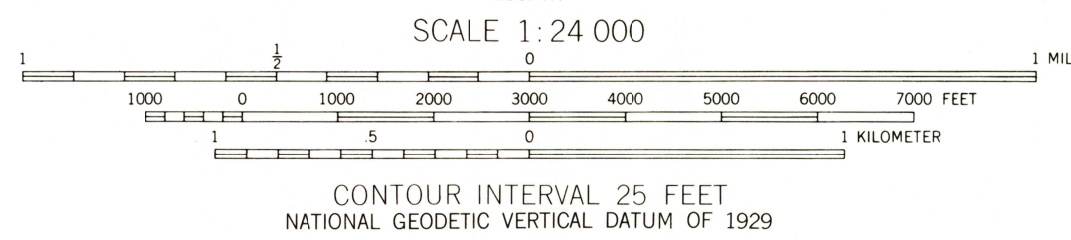
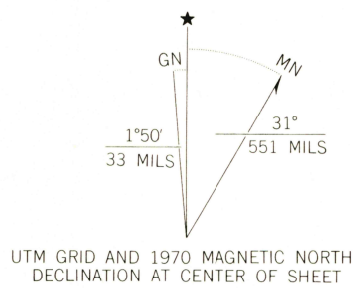
UNITED STATES
DEPARTMENT OF THE INTERIOR
GEOLOGICAL SURVEY

BEECHEY POINT A-4 NE QUADRANGLE
ALASKA-NORTH SLOPE BOROUGH
1:24 000 SERIES ORTHOPHOTOMAP (TOPOGRAPHIC)



Mapped, edited, and published by the Geological Survey

Control by US&GS and USCE
Orthophotomap prepared from aerial photograph taken June 26, 1970. Topography from Army Map Service 1:50,000 series maps, surveyed 1955
Universal Transverse Mercator projection.
1927 North American datum
10,000-foot grid based on Alaska coordinate system, zone 4
1,000-metre Universal Transverse Mercator grid ticks, zone 6, shown in blue
Gray land lines represent unsurveyed and unmarked locations predetermined by the Bureau of Land Management
Folio U-3, Umiat Meridian



ROAD CLASSIFICATION
Winter trail

BEECHEY POINT A-4 NE, ALASKA
N7007.5-W14848/7.5X18

1970

AMS 2561 III NE-SERIES Q801

FOR SALE BY U.S. GEOLOGICAL SURVEY
FAIRBANKS, ALASKA 99701, DENVER, COLORADO 80225, OR RESTON, VIRGINIA 22092
A FOLDER DESCRIBING TOPOGRAPHIC MAPS AND SYMBOLS IS AVAILABLE ON REQUEST

USGS
Historical File
Topographic Division

DEC 11 1974

7600