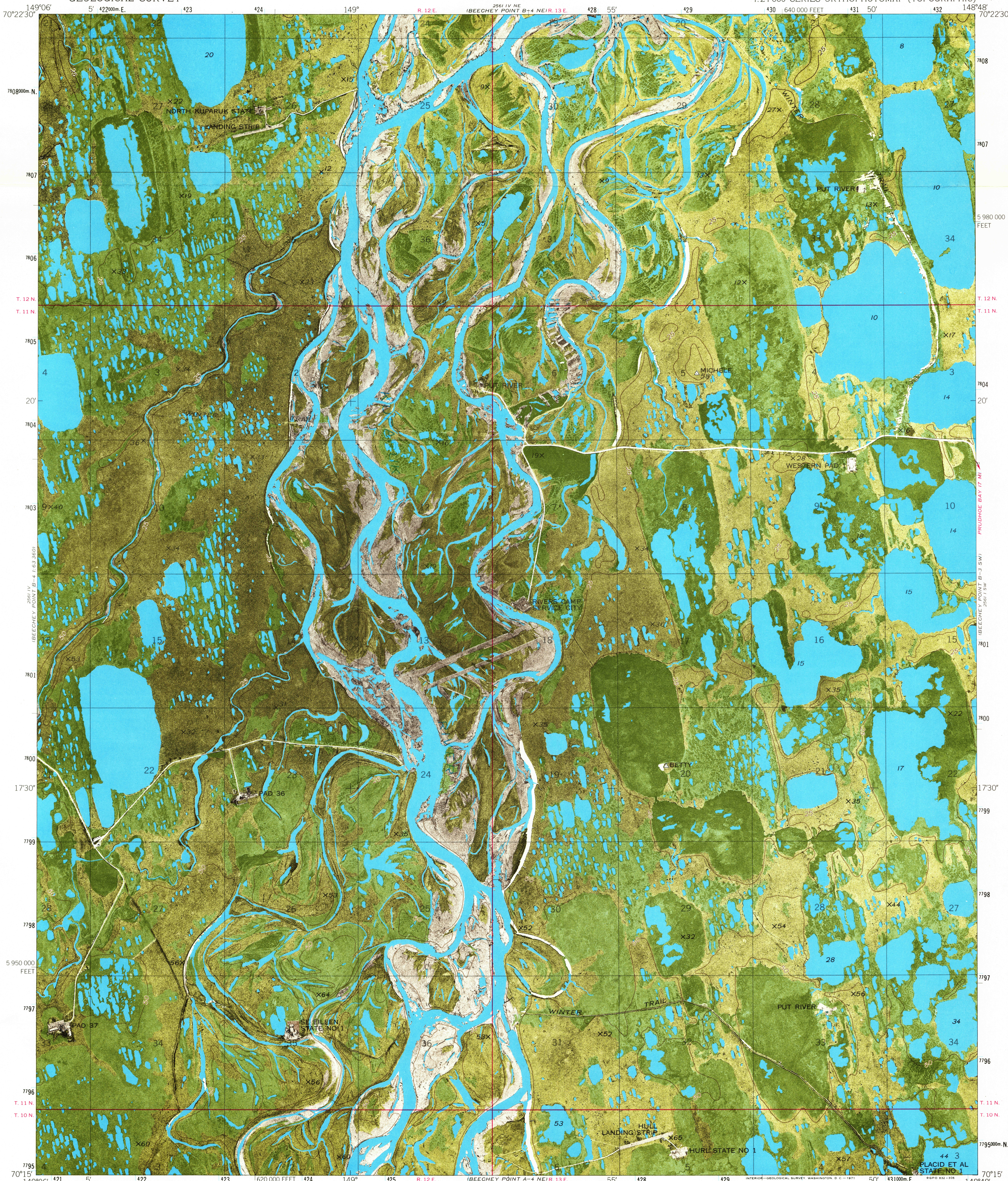


BEECHEY POINT B-4 SE
1:24,000
T. 10 N. R. 12 E.

UNITED STATES
DEPARTMENT OF THE INTERIOR
GEOLOGICAL SURVEY

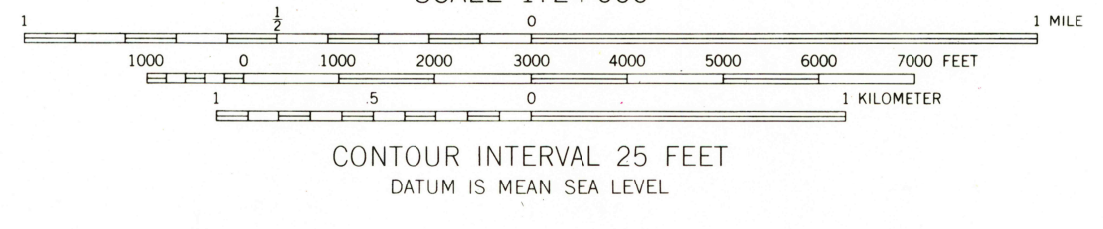
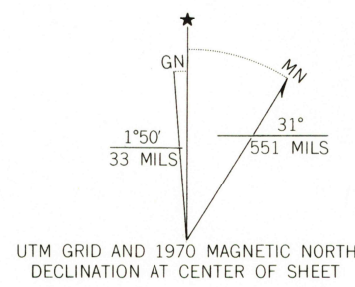
BEECHEY POINT B-4 SE QUADRANGLE
ALASKA
1:24 000 SERIES ORTHOPHOTOMAP (TOPOGRAPHIC)

BEECHEY POINT B-3 NW
1:24,000
T. 11 N. R. 13 E.



BEECHEY POINT A-4
1:24,000
T. 11 N. R. 12 E.

Mapped, edited, and published by the Geological Survey
Control by US&GS and USCE
Orthophotomap prepared from aerial photograph
taken June 26, 1970. Topography from Army Map Service
1:50,000 series maps, surveyed 1955
Universal Transverse Mercator projection,
1927 North American datum
10,000-foot grid based on Alaska coordinate system, zone 4
1,000-meter Universal Transverse Mercator grid ticks,
zone 6, shown in blue
Gray land lines represent unsurveyed and unmarked locations
predetermined by the Bureau of Land Management
Folio U-3, Umiat Meridian



BEECHEY POINT B-4 SE, ALASKA
N7015-W14848/7.5X18

1970

AMS 2561 IV SE-SERIES Q801

U.S.G.S.
FILE COPY
TOPOGRAPHIC DIVISION

1971
JAN 28

2500

HISTORICAL