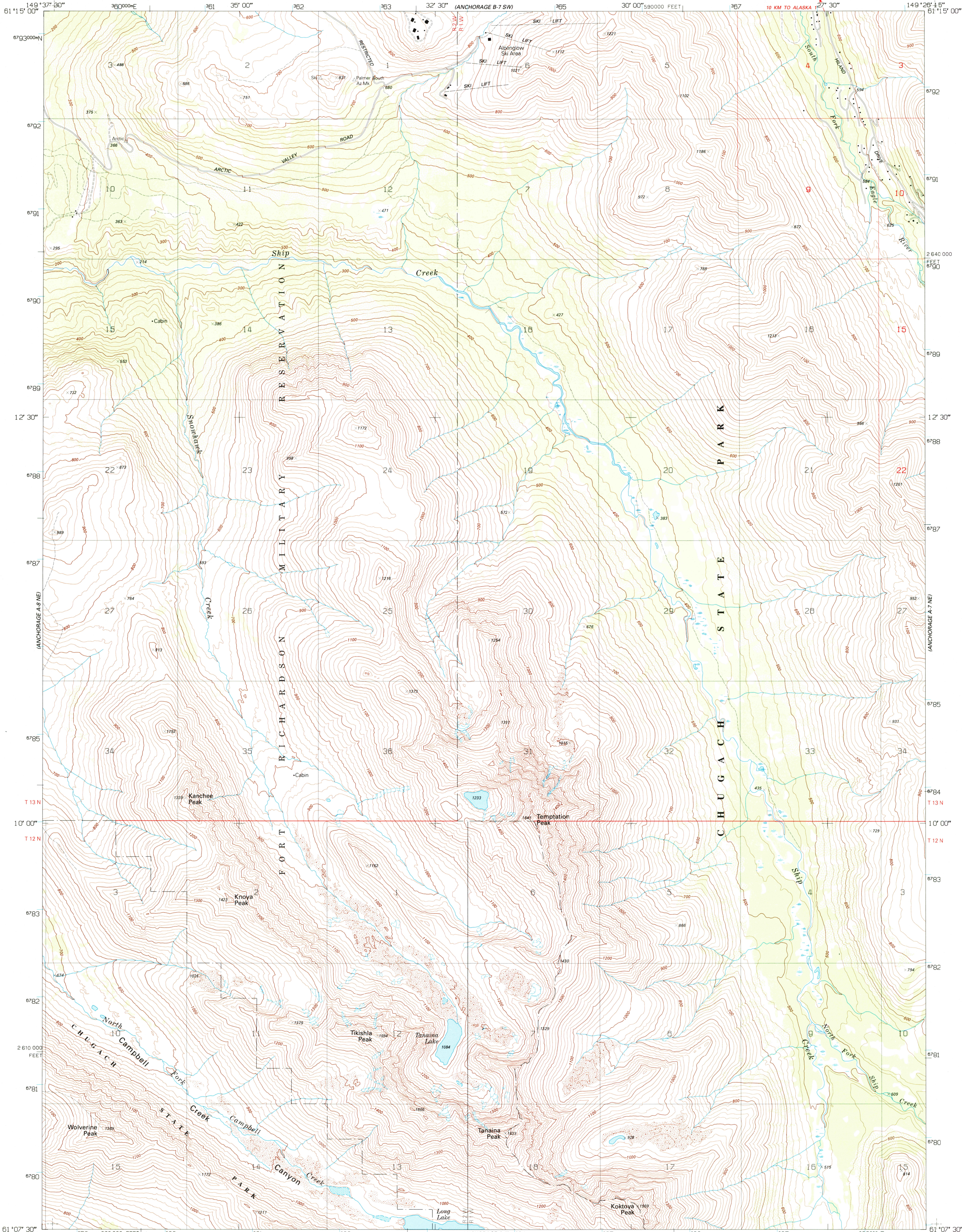
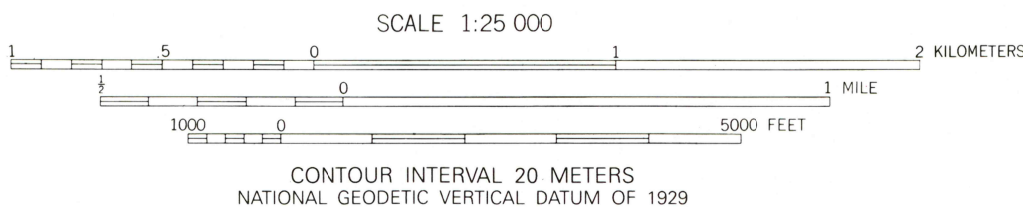
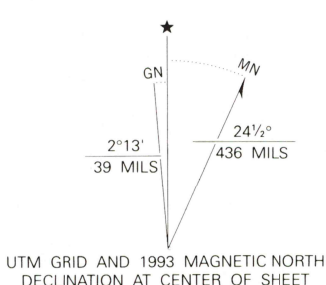


UNITED STATES
DEPARTMENT OF THE INTERIOR
GEOLOGICAL SURVEY

ANCHORAGE (A-7) NW QUADRANGLE
MUNICIPALITY OF ANCHORAGE
1:25 000 SCALE SERIES (TOPOGRAPHIC)
NW/4 ANCHORAGE (A-7) 1:63 360 SCALE QUADRANGLE



Produced by the United States Geological Survey
Control by USGS and NOS/NOAA
Compiled from aerial photographs taken 1988 and 1990
Field checked 1991. Map edited 1993
1927 North American Datum (NAD 27). Projection and
blue 1000-meter ticks: Universal Transverse Mercator, zone 6
10 000-foot ticks: Alaska Coordinate System, zone 4
North American Datum of 1983 (NAD 83) is shown by dashed
corner ticks. The values of the shift between NAD 27 and NAD 83
for 7.5-minute intersections are given in USGS Bulletin 1075.
There may be private inholdings within the boundaries of the
National or State reservations shown on this map.
Gray land lines represent unsurveyed and unmarked locations
predetermined by the Bureau of Land Management,
Folios S-13, Seward Meridian
Swamps, as portrayed, indicate only wetter areas,
usually of low relief, as interpreted from aerial photographs



CONTROL ELEVATIONS SHOWN TO THE NEAREST 0.1 METER
OTHER ELEVATIONS SHOWN TO THE NEAREST METER
To convert meters to feet multiply by 3.2808
To convert feet to meters multiply by 0.3048

THIS MAP COMPLIES WITH NATIONAL MAP ACCURACY STANDARDS
FOR SALE BY U.S. GEOLOGICAL SURVEY
FAIRBANKS, ALASKA 99701; DENVER, COLORADO 80225; OR RESTON, VIRGINIA 22092
A FOLDER DESCRIBING TOPOGRAPHIC MAPS AND SYMBOLS IS AVAILABLE ON REQUEST

ROAD CLASSIFICATION
Primary highway, hard surface
Secondary highway, hard surface
Light-duty road, hard or improved surface
Unimproved road
State Route



ANCHORAGE (A-7) NW, ALASKA
NW/4 ANCHORAGE (A-7) 1:63 360 SCALE QUADRANGLE
61149-B4-TM-025
1993

