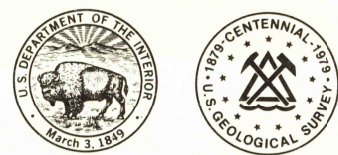
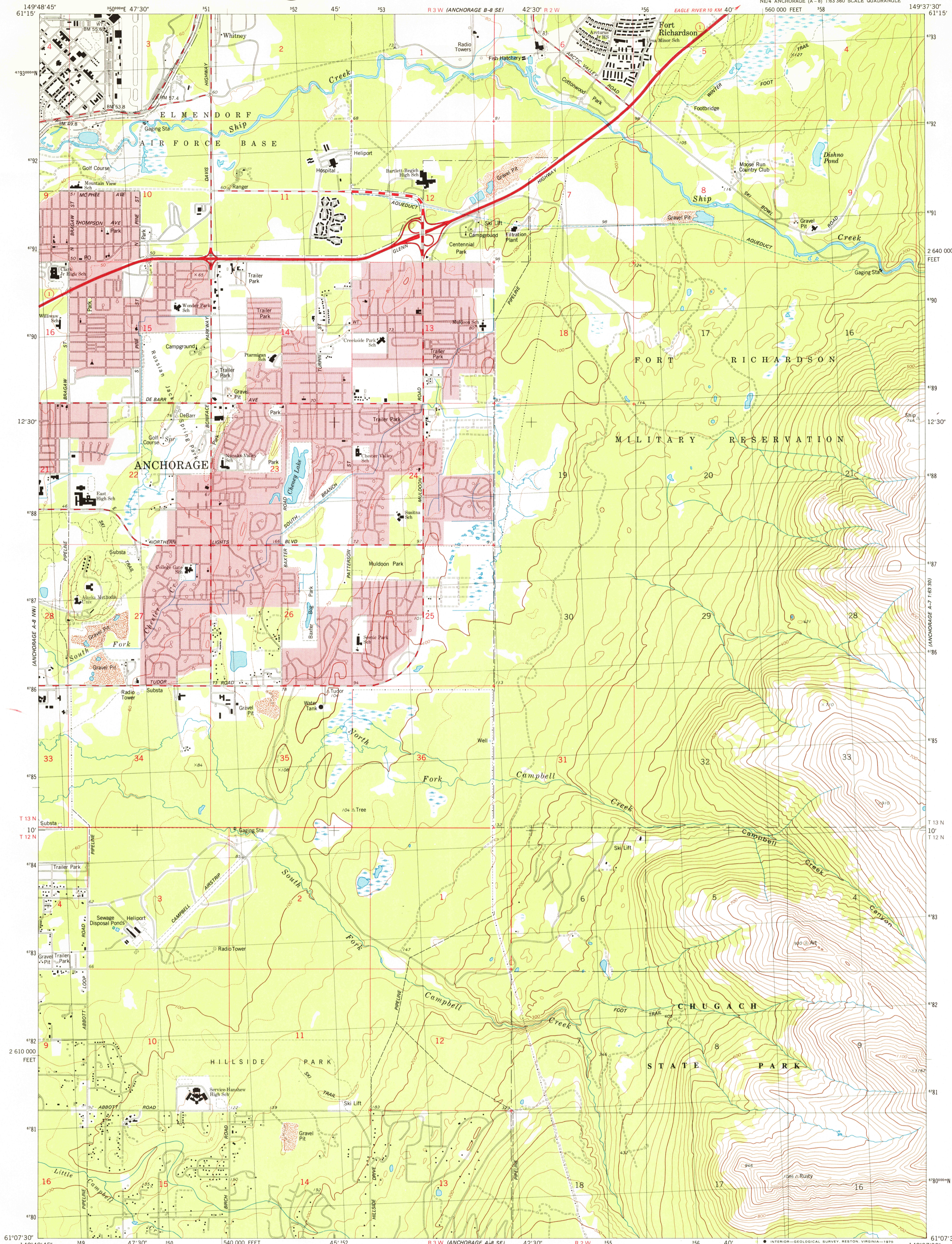


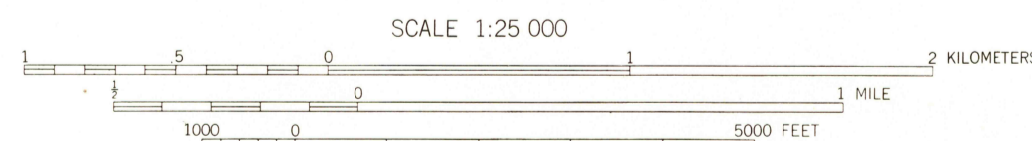
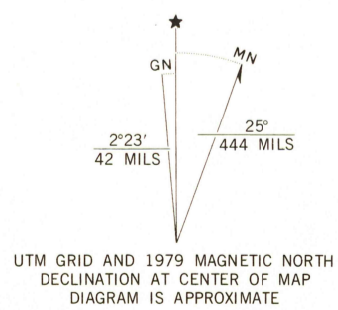
UNITED STATES
DEPARTMENT OF THE INTERIOR
GEOLOGICAL SURVEY



ANCHORAGE (A-8) NE QUADRANGLE
ALASKA—MUNICIPALITY OF ANCHORAGE
1:25 000 SCALE SERIES (TOPOGRAPHIC)
NE/4 ANCHORAGE (A-8) 1:63 360 SCALE QUADRANGLE



Mapped, edited, and published by the Geological Survey
Control by USGS and NOS/NOAA
Topography by photogrammetric methods from aerial photographs
taken 1972. Field checked 1973. Map edited 1979
Projection and 10,000-foot grid ticks: Alaska
coordinate system, zone 4 (transverse Mercator)
1000-meter Universal Transverse Mercator grid, zone 6
1927 North American datum
Gray land lines represent unsurveyed and unmarked
locations predetermined by the Bureau of Land Management
Folio S-13, Seward Meridian
Red tint indicates areas in which only landmark buildings are shown
There may be private inholdings within the boundaries of the
National or State reservations shown on this map



CONTOUR INTERVAL 20 METERS
DOTTED LINES REPRESENT 10-METER CONTOURS
NATIONAL GEODETIC VERTICAL DATUM OF 1929

THIS MAP COMPLIES WITH NATIONAL MAP ACCURACY STANDARDS
FOR SALE BY U.S. GEOLOGICAL SURVEY
FAIRBANKS, ALASKA 99701, DENVER, COLORADO 80225, OR RESTON, VIRGINIA 22092
A FOLDER DESCRIBING TOPOGRAPHIC MAPS AND SYMBOLS IS AVAILABLE ON REQUEST



ROAD CLASSIFICATION
Primary highway, hard surface
Secondary highway, hard surface
Unimproved road
State Route

ANCHORAGE (A-8) NE, ALASKA
NE/4 ANCHORAGE (A-8) 1:63 360 SCALE QUADRANGLE
N6107.5-W14937.5/7.5x11.25

1979
USGS
Historical File
Topographic Division

CONTOURS AND ELEVATIONS IN METERS

FEB 13 1980