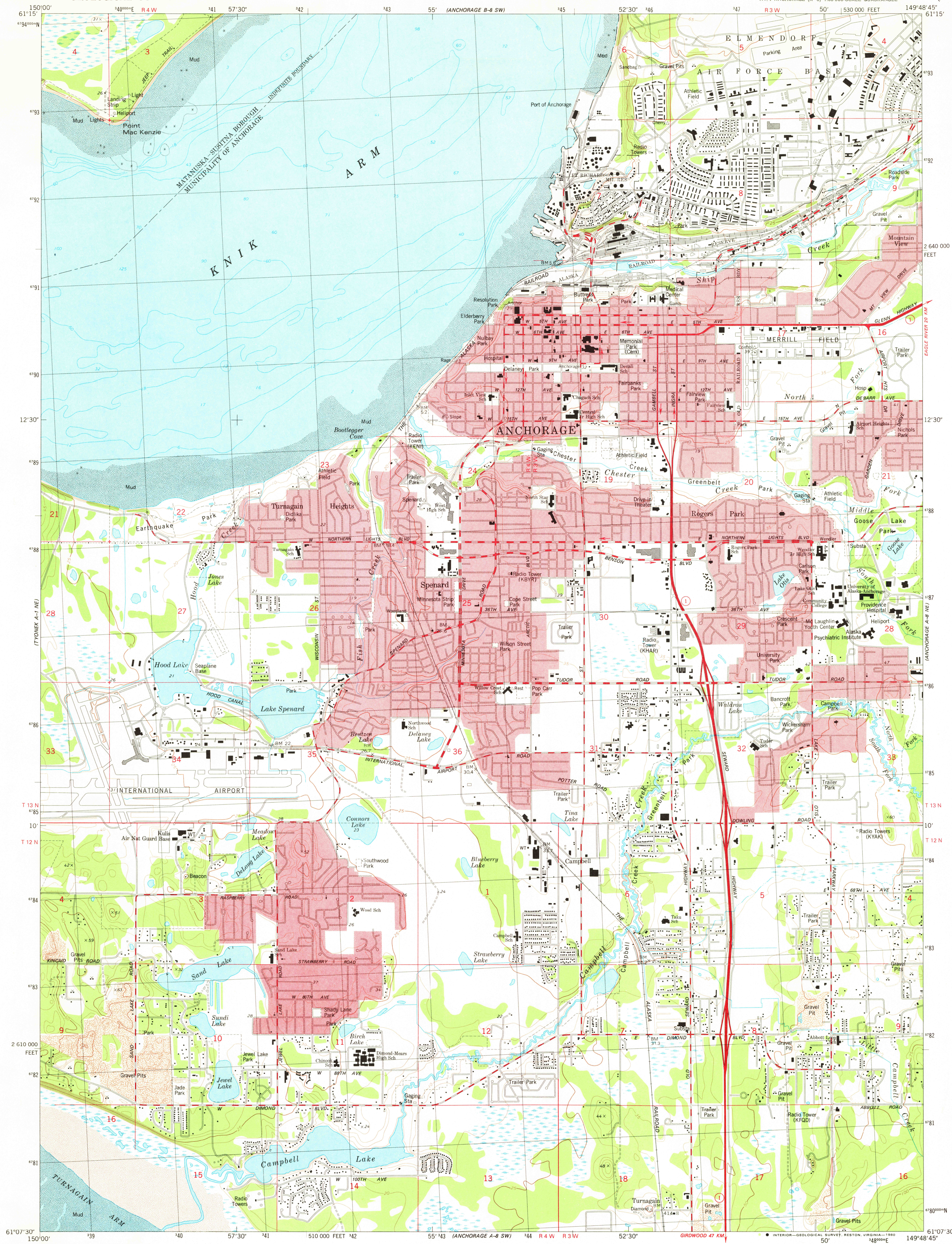
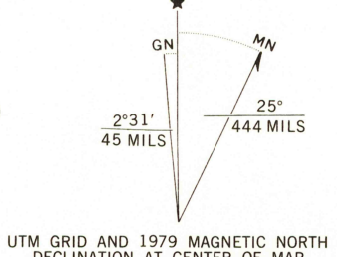


UNITED STATES
DEPARTMENT OF THE INTERIOR
GEOLOGICAL SURVEY

ANCHORAGE (A-8) NW QUADRANGLE
ALASKA
1:25 000-SCALE SERIES (TOPOGRAPHIC)
NW/4 ANCHORAGE (A-8) 1:63 360-SCALE QUADRANGLE



Mapped, edited, and published by the Geological Survey
Control by USGS and NOS/NOAA
Topography by photogrammetric methods from aerial photographs
taken 1972. Field checked 1973. Map edited 1979
Selected hydrographic data compiled from NOS/NOAA chart 16664 (1979)
This information is not intended for navigational purposes
Projection and 10,000-foot grid ticks: Alaska
coordinate system, zone 4 (transverse Mercator)
1000-meter Universal Transverse Mercator grid, zone 6
1927 North American datum
Red tint indicates areas in which only landmark buildings are shown
There may be private inholdings within the boundaries of the
National or State reservations shown on this map



CONTOUR INTERVAL 5 METERS
NATIONAL GEODETIC VERTICAL DATUM OF 1929
DEPTH CURVES AND SOUNDINGS IN FEET-DATUM IS MEAN LOWER LOW WATER
SHORELINE SHOWN REPRESENTS THE APPROXIMATE LINE OF MEAN HIGH WATER
THE MEAN RANGE OF TIDE IS APPROXIMATELY 7.9 METERS

THIS MAP COMPLIES WITH NATIONAL MAP ACCURACY STANDARDS
FOR SALE BY U.S. GEOLOGICAL SURVEY
FAIRBANKS, ALASKA 99701, DENVER, COLORADO 80225, OR RESTON, VIRGINIA 22092
A FOLDER DESCRIBING TOPOGRAPHIC MAPS AND SYMBOLS IS AVAILABLE ON REQUEST

CONTOURS AND ELEVATIONS IN METERS

ROAD CLASSIFICATION
Primary highway, hard surface
Secondary highway, hard surface
Unimproved road
State Route



ANCHORAGE (A-8) NW, ALASKA
NW/4 ANCHORAGE (A-8) 1:63 360-SCALE QUADRANGLE
N6107.5-W14948.75/7.5x11.25
1979 USGS
Historical File
Topographic Division

MAY 12 1980