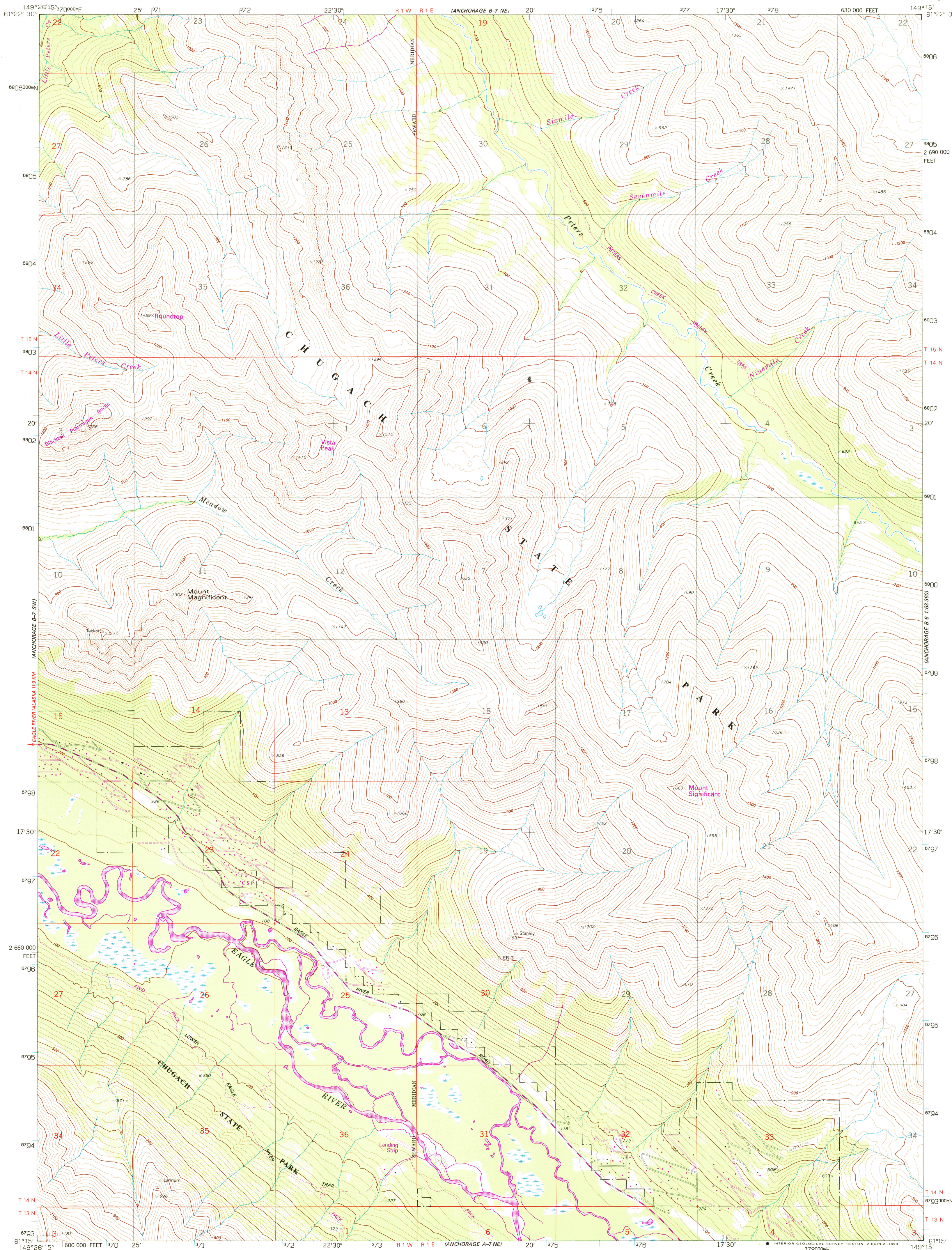


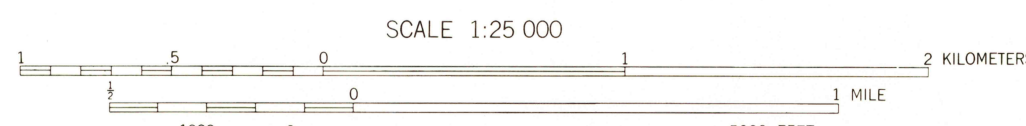
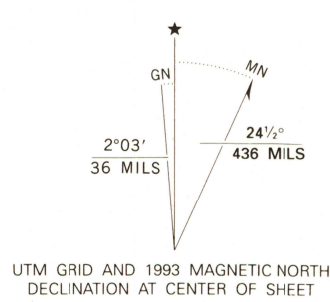
UNITED STATES  
DEPARTMENT OF THE INTERIOR  
GEOLOGICAL SURVEY

ANCHORAGE (B-7) SE QUADRANGLE  
ALASKA-MUNICIPALITY OF ANCHORAGE  
1:25 000-SCALE SERIES (TOPOGRAPHIC)

SE/4 ANCHORAGE (B-7) 1:63 360-SCALE QUADRANGLE



Produced by the United States Geological Survey  
Control by USGS and NOS/NOAA  
Compiled from aerial photographs taken 1972. Information shown in purple and woodland compiled from aerial photographs taken 1990 and other sources and has been field checked. Map edited 1993. Conflicts may exist between some updated features and previously mapped contours.  
1927 North American Datum (NAD 27). Projection and blue 1000-meter ticks: Universal Transverse Mercator, zone 6 10 000-foot ticks: Alaska Coordinate System, zone 4  
North American Datum of 1983 (NAD 83) is shown by dashed corner ticks. The values of the shift between NAD 27 and NAD 83 for 7.5-minute intersections are given in USGS Bulletin 1875. There may be private inholdings within the boundaries of the National or State reservations shown on this map.  
Gray land lines represent unsurveyed and unmarked locations predetermined by the Bureau of Land Management, Folios S-13 and S-14, Seward Meridian



CONTOUR INTERVAL 20 METERS  
NATIONAL GEODETIC VERTICAL DATUM OF 1929  
CONTROL ELEVATIONS SHOWN TO THE NEAREST 0.1 METER  
OTHER ELEVATIONS SHOWN TO THE NEAREST METER  
To convert meters to feet multiply by 3.2808  
To convert feet to meters multiply by .3048

THIS MAP COMPLIES WITH NATIONAL MAP ACCURACY STANDARDS  
FOR SALE BY U.S. GEOLOGICAL SURVEY  
FAIRBANKS, ALASKA 99701; DENVER, COLORADO 80225; OR RESTON, VIRGINIA 22092  
A FOLDER DESCRIBING TOPOGRAPHIC MAPS AND SYMBOLS IS AVAILABLE ON REQUEST

ROAD CLASSIFICATION	
Primary highway, hard surface	Light-duty road, hard or improved surface
Secondary highway, hard surface	Unimproved road
	State Route



ANCHORAGE (B-7) SE, ALASKA  
SE/4 ANCHORAGE (B-7) 1:63 360-SCALE QUADRANGLE  
61149-C3-TM-025

1979  
REVISED 1993

