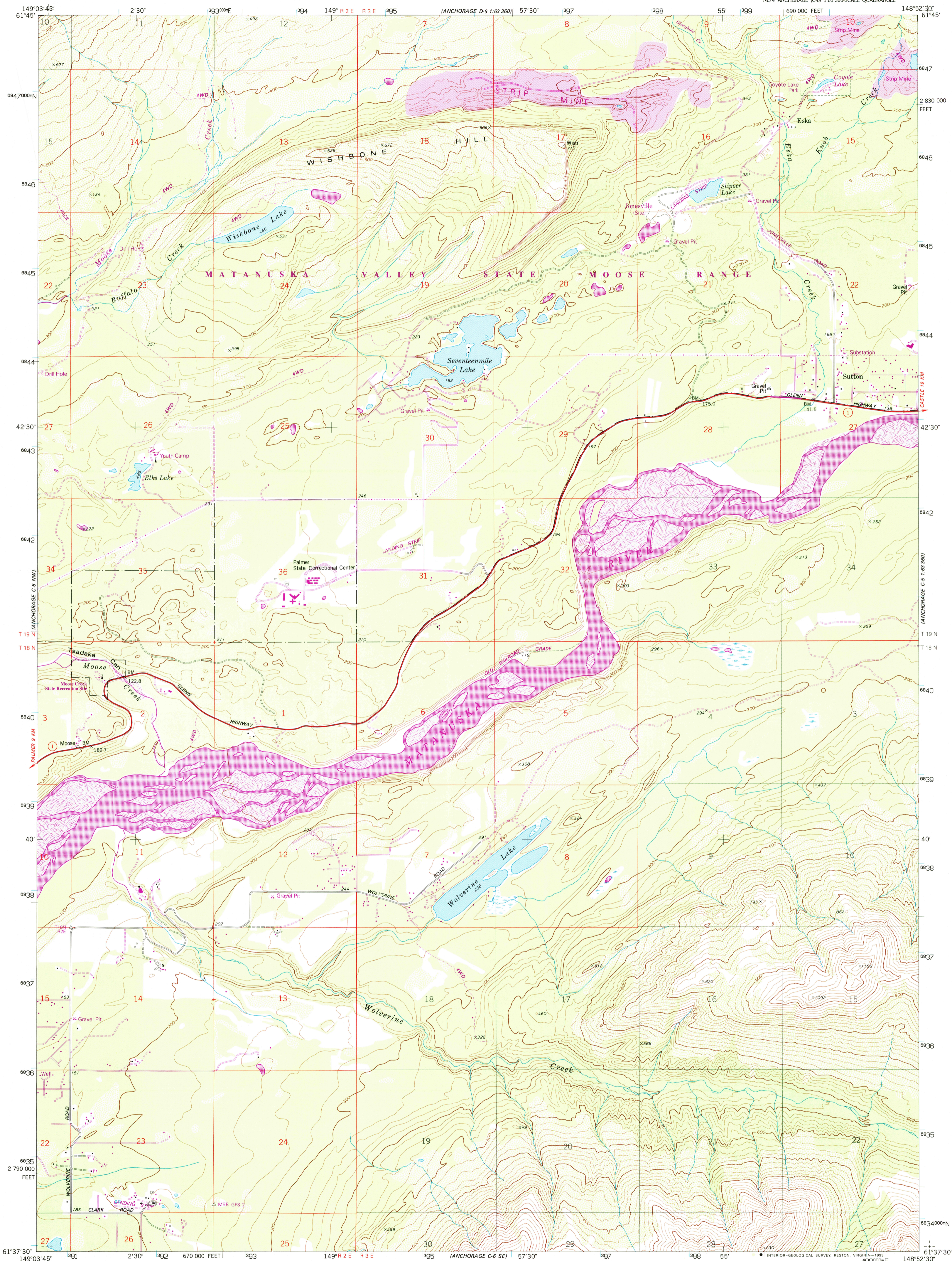
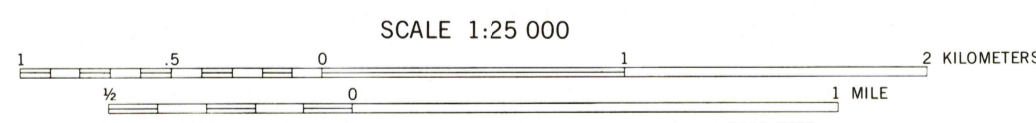
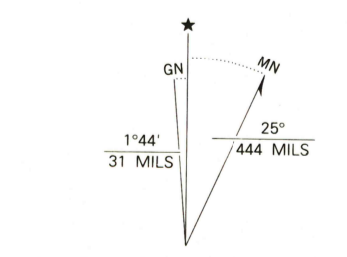


UNITED STATES
DEPARTMENT OF THE INTERIOR
GEOLOGICAL SURVEY

ANCHORAGE (C-6) NE QUADRANGLE
ALASKA-MATANUSKA-SUSTITNA BOROUGH
1:25 000-SCALE SERIES (TOPOGRAPHIC)
NE/4 ANCHORAGE (C-6) 1:63 360-SCALE QUADRANGLE



Produced by the United States Geological Survey
Control by USGS, NOS/NOAA and USCE
Compiled from aerial photographs taken 1972. Revisions shown in purple and woodland compiled from aerial photographs taken 1990 and other sources and has been field checked. Map edited 1993
Conflicts may exist between some updated features and previously mapped contours
1927 North American Datum (NAD 27). Projection and blue 1000-meter ticks: Universal Transverse Mercator, zone 6
10000-foot ticks: Alaska Coordinate System, zone 4
North American Datum of 1983 (NAD 83) is shown by dashed corner ticks. The values of the shift between NAD 27 and NAD 83 for 7.5-minute intersections are given in USGS Bulletin 1875
There may be private inholdings within the boundaries of the National or State reservations shown on this map
Gray land lines represent unsurveyed and unmarked locations predetermined by the Bureau of Land Management, Folio S-1, Seward Meridian
Swamps, as portrayed, indicate only wetter areas, usually of low relief, as interpreted from aerial photographs



CONTOUR INTERVAL 20 METERS
NATIONAL GEODETIC VERTICAL DATUM OF 1929
CONTROL ELEVATIONS SHOWN TO THE NEAREST 0.1 METER
OTHER ELEVATIONS SHOWN TO THE NEAREST METER
To convert meters to feet multiply by 3.2808
To convert feet to meters multiply by 0.3048

THIS MAP COMPLIES WITH NATIONAL MAP ACCURACY STANDARDS
FOR SALE BY U.S. GEOLOGICAL SURVEY
FAIRBANKS, ALASKA 99701; DENVER, COLORADO 80225; OR RESTON, VIRGINIA 22092
A FOLDER DESCRIBING TOPOGRAPHIC MAPS AND SYMBOLS IS AVAILABLE ON REQUEST

ROAD CLASSIFICATION
Primary highway, hard surface
Secondary highway, hard surface
Light-duty road, hard or improved surface
Unimproved road
State Route



ANCHORAGE (C-6) NE, ALASKA
NE/4 ANCHORAGE (C-6) 1:63 360-SCALE QUADRANGLE
61148-F8-TM-025

1979
REVISED 1993

