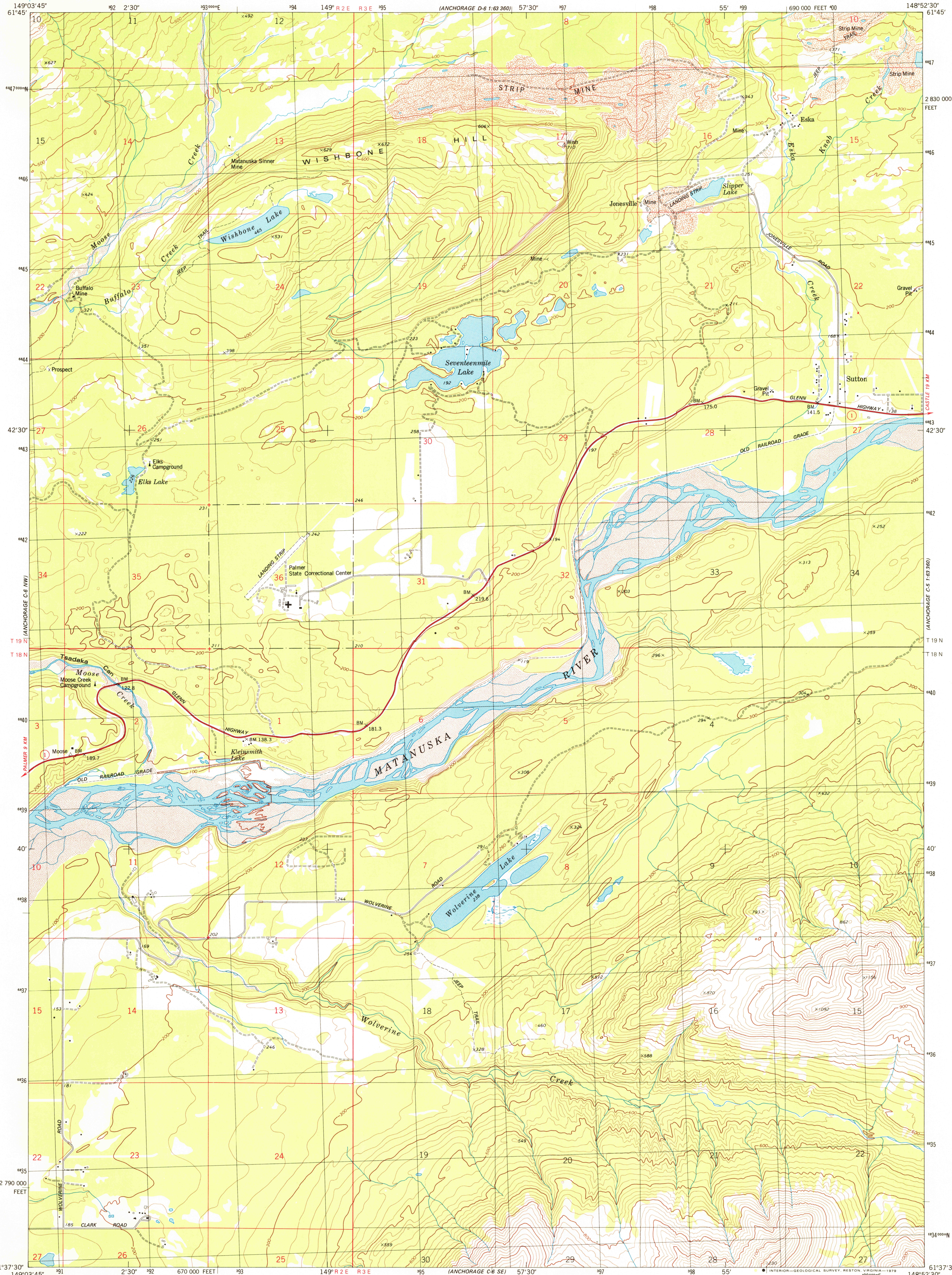


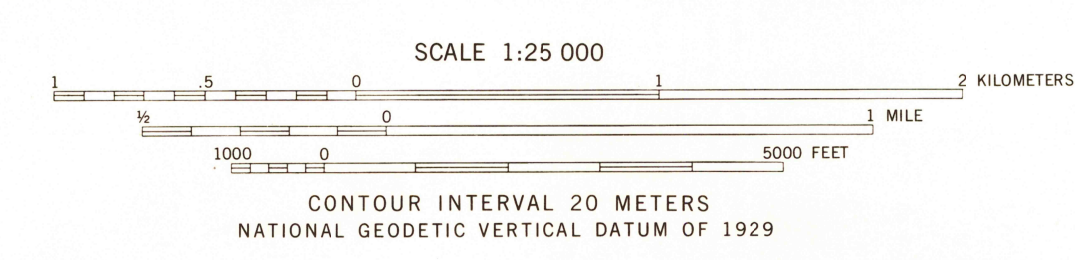
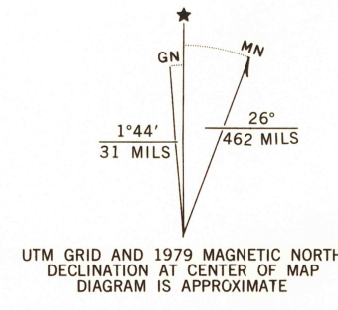
UNITED STATES
DEPARTMENT OF THE INTERIOR
GEOLOGICAL SURVEY



ANCHORAGE (C-6) NE QUADRANGLE
ALASKA - MATANUSKA - SUSITNA BOROUGH
1:25 000-SCALE SERIES (TOPOGRAPHIC)
NE/4 ANCHORAGE (C-6) 1:63 360-SCALE QUADRANGLE



Mapped, edited, and published by the Geological Survey
Control by USGS, NOS/NOAA, and USCE
Topography by photogrammetric methods from aerial photographs
taken 1972. Field checked 1973. Map edited 1979
Projection and 10,000-foot grid ticks: Alaska
coordinate system, zone 4 (transverse Mercator)
1000-meter Universal Transverse Mercator grid, zone 6
1927 North American datum
Gray land lines represent unsurveyed and unmarked
locations predetermined by the Bureau of Land Management
Folio S-1, Seward Meridian



THIS MAP COMPLIES WITH NATIONAL MAP ACCURACY STANDARDS
FOR SALE BY U.S. GEOLOGICAL SURVEY
FAIRBANKS, ALASKA 99701, DENVER, COLORADO 80225, OR RESTON, VIRGINIA 22092
A FOLDER DESCRIBING TOPOGRAPHIC MAPS AND SYMBOLS IS AVAILABLE ON REQUEST

ROAD CLASSIFICATION
Primary highway, hard surface
Secondary highway, hard surface
Light-duty road, hard or improved surface
Unimproved road
State Route



ANCHORAGE (C-6) NE, ALASKA
NE/4 ANCHORAGE (C-6) 1:63 360-SCALE QUADRANGLE
N6137.5-W14852.5/7.5x11.25

CONTOURS AND ELEVATIONS IN METERS

1979

USGS
Historical File
Topographic Division

FEB 13 1980

1850