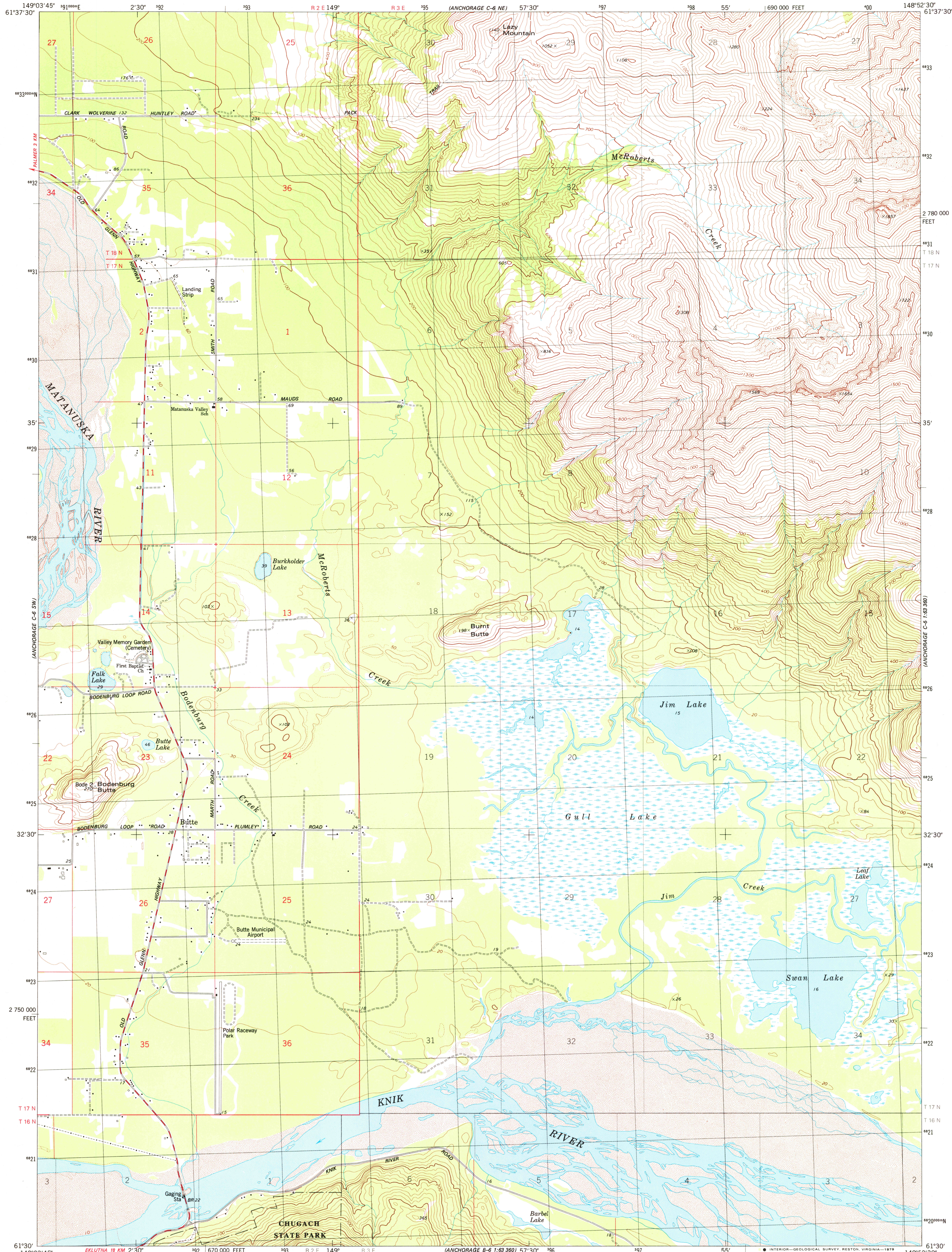


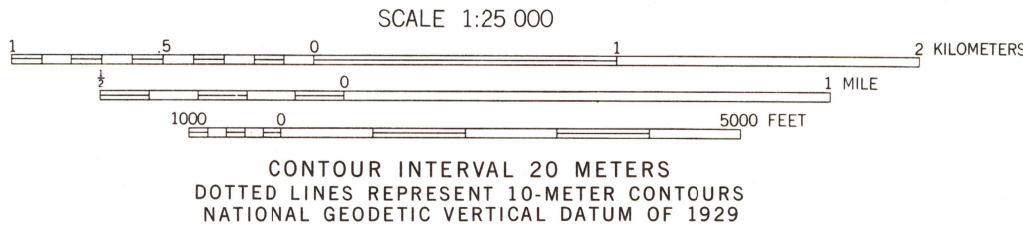
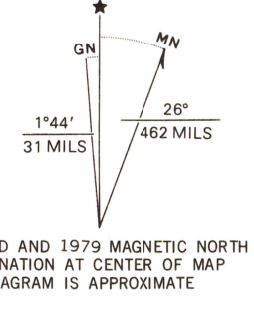
UNITED STATES
DEPARTMENT OF THE INTERIOR
GEOLOGICAL SURVEY



ANCHORAGE (C-6) SE QUADRANGLE
ALASKA — MATANUSKA-SUSITNA BOROUGH
1:25 000 SCALE SERIES (TOPOGRAPHIC)
SE/4 ANCHORAGE (C-6) 1:63 360 SCALE QUADRANGLE



Mapped, edited, and published by the Geological Survey
Control by USGS and NOS/NOAA
Topography by photogrammetric methods from aerial photographs
taken 1972. Field checked 1973. Map edited 1979
Projection and 10,000-foot grid ticks: Alaska
coordinate system, zone 4 (transverse Mercator)
1000-meter Universal Transverse Mercator grid, zone 6
1927 North American datum
Gray land lines represent unsurveyed and unmarked
locations predetermined by the Bureau of Land Management
Folios S-1 and S-14, Seward Meridian
There may be private inholdings within the boundaries of
the National or State reservations shown on this map



ROAD CLASSIFICATION

Primary highway, hard surface	Light-duty road, hard or improved surface
Secondary highway, hard surface	Unimproved road
	State Route



THIS MAP COMPLIES WITH NATIONAL MAP ACCURACY STANDARDS
FOR SALE BY U.S. GEOLOGICAL SURVEY
FAIRBANKS, ALASKA 99701, DENVER, COLORADO 80225, OR RESTON, VIRGINIA 22092
A FOLDER DESCRIBING TOPOGRAPHIC MAPS AND SYMBOLS IS AVAILABLE ON REQUEST

ANCHORAGE (C-6) SE, ALASKA
SE/4 ANCHORAGE (C-6) 1:63 360 SCALE QUADRANGLE
N6130-W14852.57.5x11.25

CONTOURS AND ELEVATIONS IN METERS

1979

USGS
Historical File
Topographic Division

NOV 19 1979

1800