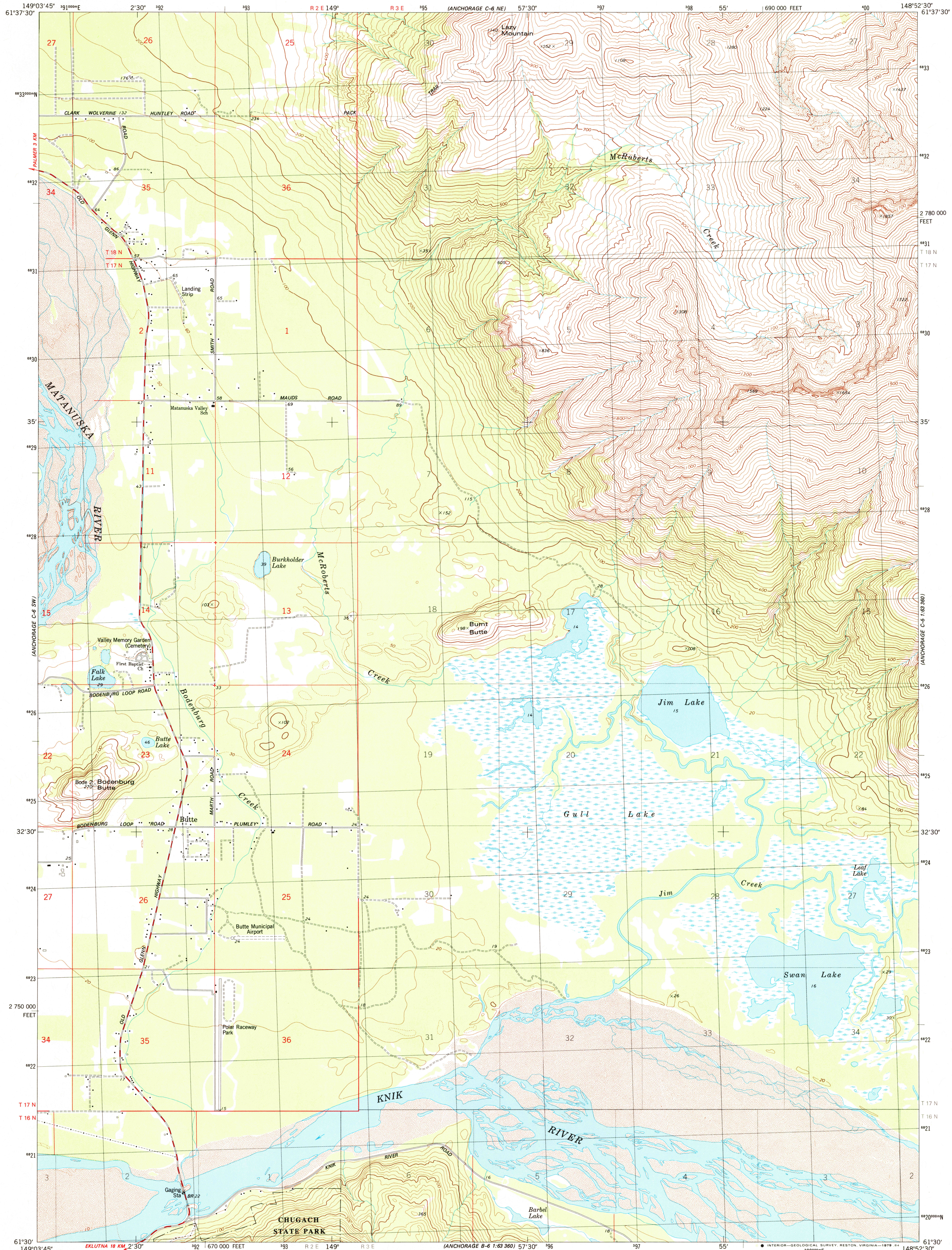
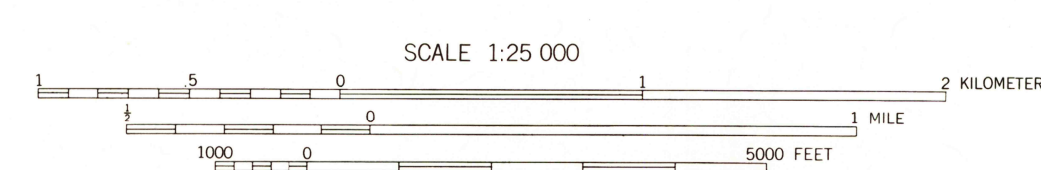
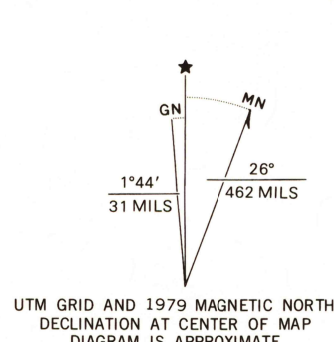


UNITED STATES
DEPARTMENT OF THE INTERIOR
GEOLOGICAL SURVEY

ANCHORAGE (C-6) SE QUADRANGLE
ALASKA — MATANUSKA-SUSITNA BOROUGH
1:25 000 SCALE SERIES (TOPOGRAPHIC)
SE/4 ANCHORAGE (C-6) 1:63 360 SCALE QUADRANGLE



Mapped, edited, and published by the Geological Survey
Control by USGS and NOS/NOAA
Topography by photogrammetric methods from aerial photographs
taken 1972. Field checked 1973. Map edited 1979
Projection and 10,000-foot grid ticks: Alaska
coordinate system, zone 4 (transverse Mercator)
1000-meter Universal Transverse Mercator grid, zone 6
1927 North American datum
Gray land lines represent unsurveyed and unmarked
locations predetermined by the Bureau of Land Management
Folios S-1 and S-14, Seward Meridian
There may be private inholdings within the boundaries of
the National or State reservations shown on this map



CONTOUR INTERVAL 20 METERS
DOTTED LINES REPRESENT 10-METER CONTOURS
NATIONAL GEODETIC DATUM OF 1929

THIS MAP COMPLIES WITH NATIONAL MAP ACCURACY STANDARDS
FOR SALE BY U.S. GEOLOGICAL SURVEY
FAIRBANKS, ALASKA 99701, DENVER, COLORADO 80225, OR RESTON, VIRGINIA 22092
A FOLDER DESCRIBING TOPOGRAPHIC MAPS AND SYMBOLS IS AVAILABLE ON REQUEST

ROAD CLASSIFICATION
Primary highway, hard surface —————
Light-duty road, hard or improved surface —————
Secondary highway, hard surface —————
Unimproved road —————
State Route ————○———



ANCHORAGE (C-6) SE, ALASKA
SE/4 ANCHORAGE (C-6) 1:63 360 SCALE QUADRANGLE
N6130—W14852.57.5x11.25

1979

CONTOURS AND ELEVATIONS IN METERS

RETURN TO:
NHD HISTORICAL MAP ARCHIVES
USGS NATIONAL CENTER, MS-522
RESTON, VA 22092