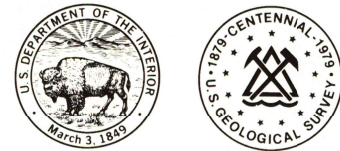
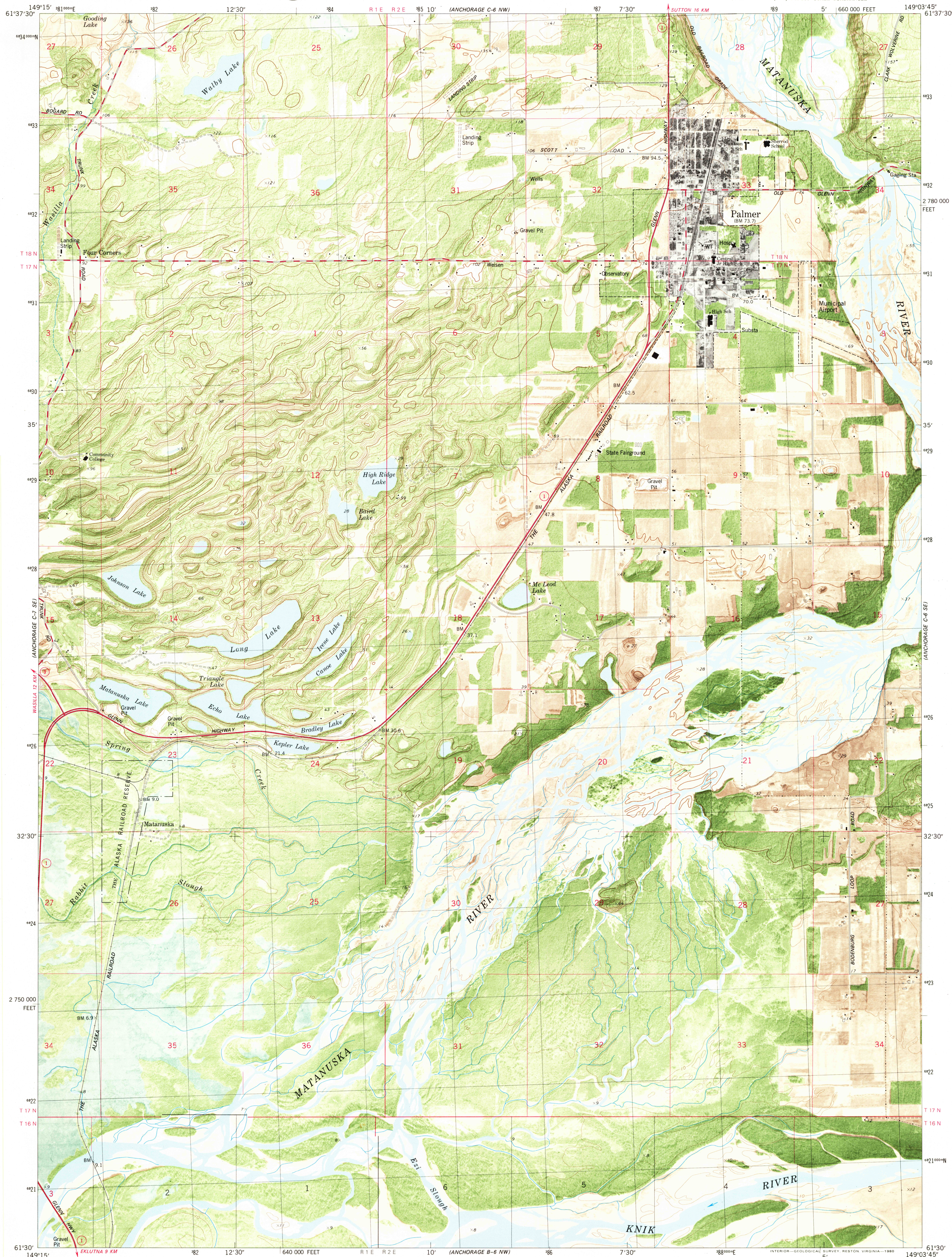


UNITED STATES
DEPARTMENT OF THE INTERIOR
GEOLOGICAL SURVEY

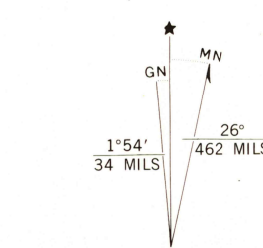


ANCHORAGE (C-6) SW QUADRANGLE
ALASKA-MATANUSKA-SUSITNA BOROUGH
1:25 000-SCALE SERIES ORTHOPHOTOMAP (TOPOGRAPHIC)

SW 1/4 ANCHORAGE (C-6) 1:63 360-SCALE QUADRANGLE



Mapped, edited, and published by the Geological Survey
Control by USGS and NOS/NOAA
Topography by photogrammetric methods from aerial photographs
taken 1972. Orthophotomosaic from aerial photographs taken 1974
Field checked 1973. Map edited 1979
Projection and 10,000-foot grid ticks: Alaska
coordinate system, zone 4 (transverse Mercator)
1000-meter Universal Transverse Mercator grid, zone 6
1927 North American datum
Gray land lines represent unsurveyed and unmarked
locations predetermined by the Bureau of Land Management
Folios S-1 and S-14, Seward Meridian
There may be private inholdings within the boundaries of the
National or State reservations shown on this map



SCALE 1:25 000
1 5 0 5 1
KILOMETERS
1 1/2 3 4 5
MILES
1000 0 5000 FEET
CONTOUR INTERVAL 5 METERS
NATIONAL GEODETIC VERTICAL DATUM OF 1929

THIS MAP COMPLIES WITH NATIONAL MAP ACCURACY STANDARDS
FOR SALE BY U.S. GEOLOGICAL SURVEY
FAIRBANKS, ALASKA 99701, DENVER, COLORADO 80225, OR RESTON, VIRGINIA 22092
A FOLDER DESCRIBING TOPOGRAPHIC MAPS AND SYMBOLS IS AVAILABLE ON REQUEST

ROAD CLASSIFICATION
Primary highway, hard surface
Secondary highway, hard surface
Unimproved road
State Route
USGS
Historical File
Topographic Division

ANCHORAGE (C-6) SW, ALASKA
SW 1/4 ANCHORAGE (C-6) 1:63 360-SCALE QUADRANGLE
N6130-W14903.75/7.5x11.25

1979

CONTOURS AND ELEVATIONS IN METERS

MAY - 1 1980