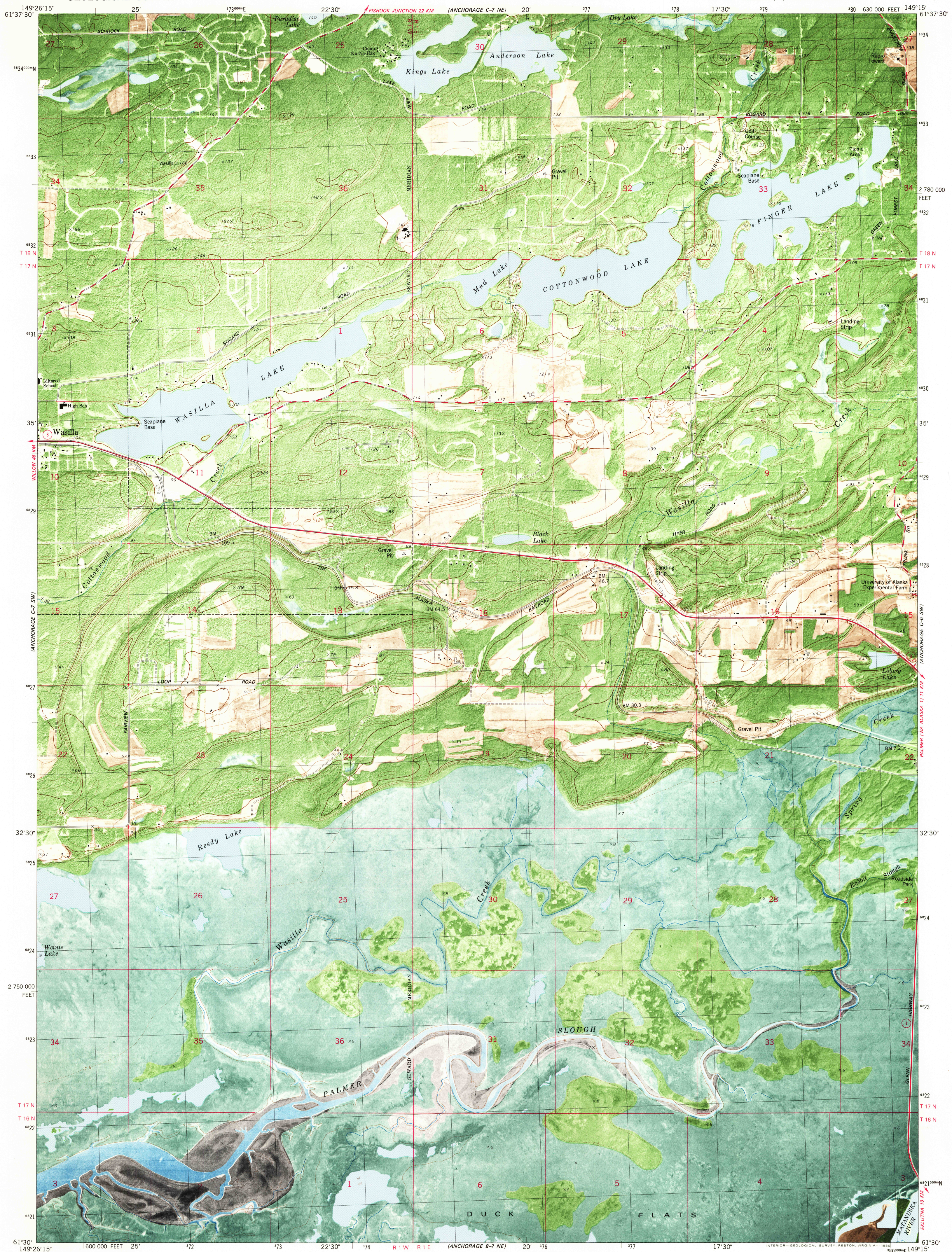
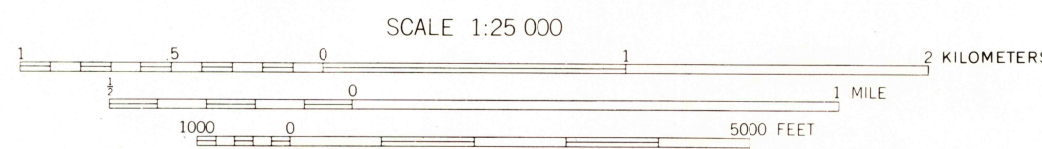
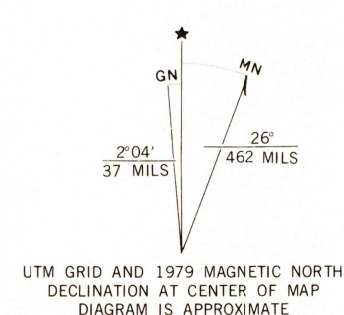


UNITED STATES
DEPARTMENT OF THE INTERIOR
GEOLOGICAL SURVEY

ANCHORAGE (C-7) SE QUADRANGLE
ALASKA—MATANUSKA—SUSITNA BOROUGH
1:25 000-SCALE SERIES ORTHOPHOTOMAP (TOPOGRAPHIC)
SE/4 ANCHORAGE (C-7) 1:63 360-SCALE QUADRANGLE



Mapped, edited, and published by the Geological Survey
Control by USGS and NOS/NOAA
Topography by photogrammetric methods from aerial photographs
taken 1972. Orthophotomosaic from aerial photographs taken 1974
Field checked 1973. Map edited 1979
Projection and 10,000-foot grid ticks: Alaska
coordinate system, zone 4 (transverse Mercator)
1000-meter Universal Transverse Mercator grid, zone 6
1927 North American datum



CONTOUR INTERVAL 5 METERS
DOTTED LINES REPRESENT 2.5-METER CONTOURS
NATIONAL GEODETIC VERTICAL DATUM OF 1929
SHORELINE SHOWN AS OF DATE OF PHOTOGRAPHY
THE MEAN RANGE OF TIDE IS APPROXIMATELY 7.9 METERS

THIS MAP COMPLIES WITH NATIONAL MAP ACCURACY STANDARDS
FOR SALE BY U.S. GEOLOGICAL SURVEY
FAIRBANKS, ALASKA 99701, DENVER, COLORADO 80225, OR RESTON, VIRGINIA 22092
A FOLDER DESCRIBING TOPOGRAPHIC MAPS AND SYMBOLS IS AVAILABLE ON REQUEST



ROAD CLASSIFICATION
Primary highway, hard surface
Secondary highway, hard surface
Unimproved road, hard surface
State Route

ANCHORAGE (C-7) SE, ALASKA
SE/4 ANCHORAGE (C-7) 1:63 360-SCALE QUADRANGLE
N6130—W14915/7.5x11.25

1979

CONTOURS AND ELEVATIONS IN METERS

FEB 17 1982

1400