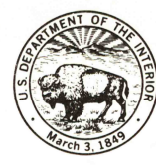
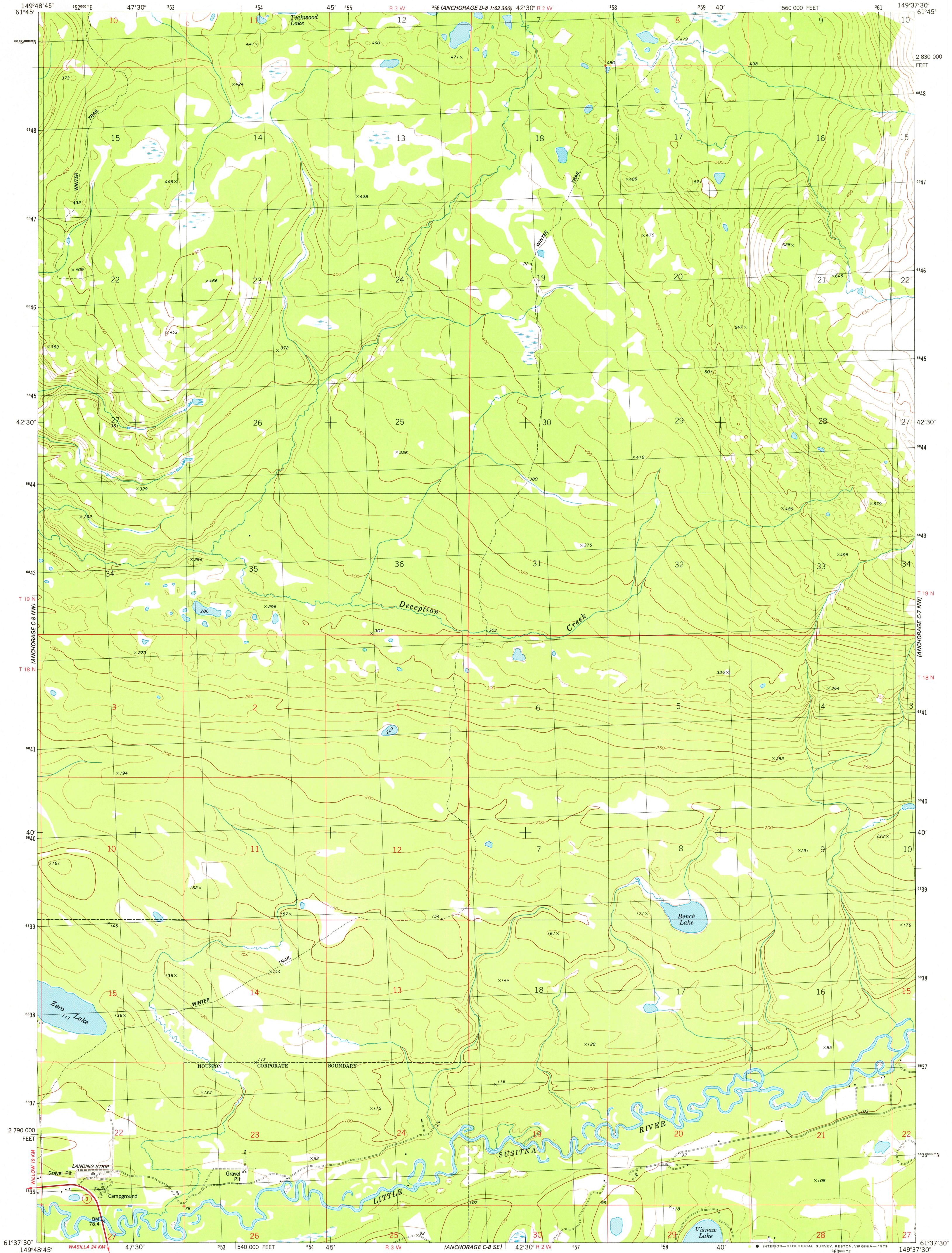


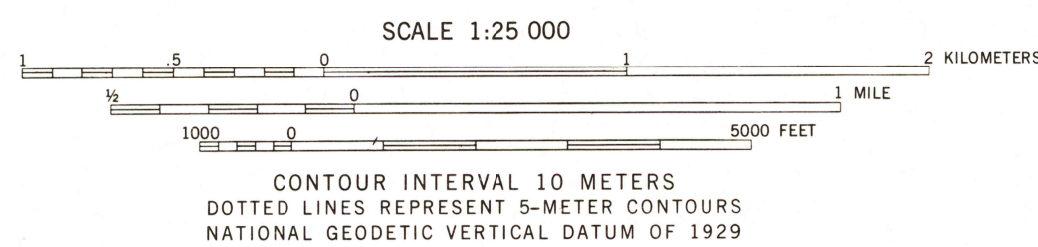
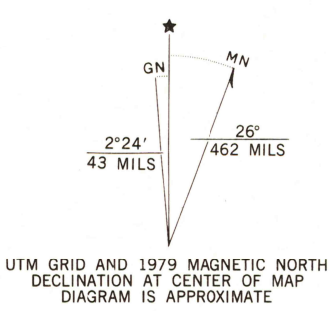
UNITED STATES
DEPARTMENT OF THE INTERIOR
GEOLOGICAL SURVEY



ANCHORAGE (C-8) NE QUADRANGLE
ALASKA — MATANUSKA-SUSITNA BOROUGH
1:25 000-SCALE SERIES (TOPOGRAPHIC)
NE/4 ANCHORAGE (C-8) 1:63 360-SCALE QUADRANGLE



Maped, edited, and published by the Geological Survey
Control by USGS and NOS/NOAA
Topography by photogrammetric methods from aerial photographs
taken 1972. Field checked 1973. Map edited 1979
Projection and 10,000-foot grid ticks: Alaska
coordinate system, zone 4 (transverse Mercator)
1000-meter Universal Transverse Mercator grid, zone 6
1927 North American datum
Gray land lines represent unsurveyed and unmarked locations
predetermined by the Bureau of Land Management.
Folio S-2, Seward Meridian



THIS MAP COMPLIES WITH NATIONAL MAP ACCURACY STANDARDS
FOR SALE BY U.S. GEOLOGICAL SURVEY
FAIRBANKS ALASKA 99701, DENVER, COLORADO 80225, OR RESTON, VIRGINIA 22092
A FOLDER DESCRIBING TOPOGRAPHIC MAPS AND SYMBOLS IS AVAILABLE ON REQUEST

ROAD CLASSIFICATION
Primary highway, hard surface
Secondary highway, hard surface
Unimproved road
Light-duty road, hard or improved surface
Unimproved road
USGS
Historical File
Topographic Division



ANCHORAGE (C-8) NE, ALASKA
NE/4 ANCHORAGE (C-8) 1:63 360-SCALE QUADRANGLE
N6137.5-W14937.5/7.5x11.25
1979

CONTOURS AND ELEVATIONS IN METERS

SEP 27 1979
1750