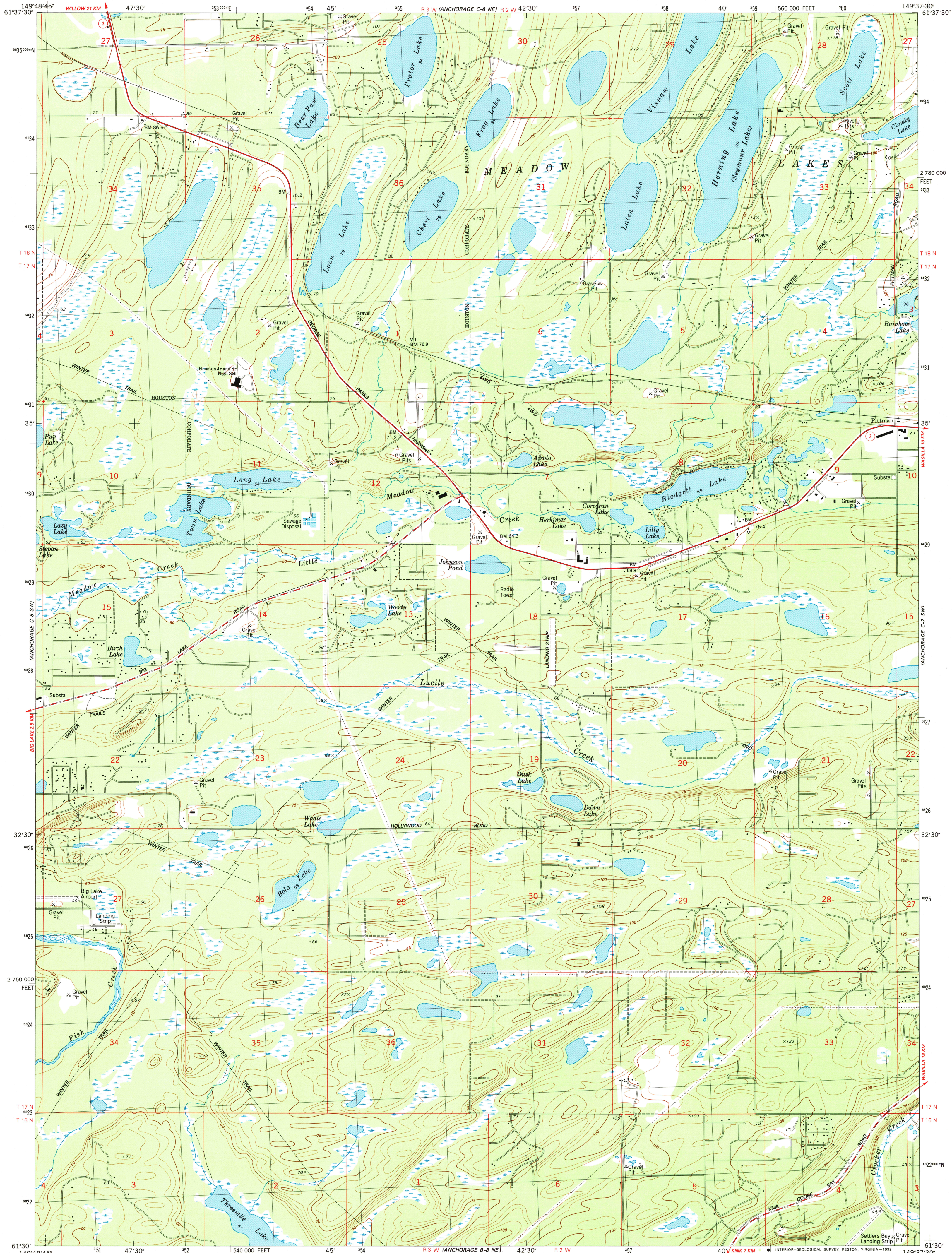
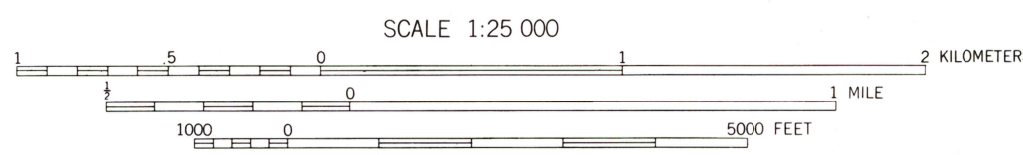
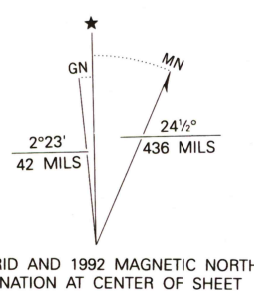


UNITED STATES  
DEPARTMENT OF THE INTERIOR  
GEOLOGICAL SURVEY

ANCHORAGE (C-8) SE QUADRANGLE  
ALASKA-MATANUSKA-SUSITNA BOROUGH  
1:25 000-SCALE SERIES (TOPOGRAPHIC)  
SE/4 ANCHORAGE (C-8) 1:63 360 SCALE QUADRANGLE



Produced by the United States Geological Survey  
Control by USGS, NOS/NOAA and DMA  
Compiled from aerial photographs taken 1972. Revised from aerial photographs taken 1986. Field checked 1987. Map edited 1992  
North American Datum of 1927 (NAD 27). Projection and 1000-meter grid, Universal Transverse Mercator, zone 6  
10 000-foot grid ticks based on Alaska coordinate system, zone 4  
The difference between NAD 27 and North American Datum of 1983 (NAD 83) for 7.5 minute intersections is given in USGS Bulletin 1875. The NAD 83 is shown by dashed corner ticks  
Swamps, as portrayed, indicate only the wetter areas, usually of low relief, as interpreted from aerial photographs



CONTROL ELEVATIONS SHOWN TO THE NEAREST 0.1 METER  
OTHER ELEVATIONS SHOWN TO THE NEAREST METER  
To convert meters to feet multiply by 3.2808  
To convert feet to meters multiply by .3048



ROAD CLASSIFICATION  
Primary highway, hard surface  
Secondary highway, hard surface  
Light-duty road, hard or improved surface  
Unimproved road  
State Route

ANCHORAGE (C-8) SE, ALASKA  
SE/4 ANCHORAGE (C-8) 1:63 360 SCALE QUADRANGLE  
61149-E6-TM-025

OCT 1992

THIS MAP COMPLIES WITH NATIONAL MAP ACCURACY STANDARDS  
FOR SALE BY U.S. GEOLOGICAL SURVEY  
FAIRBANKS, ALASKA 99701; DENVER, COLORADO 80225; OR RESTON, VIRGINIA 22092  
A FOLDER DESCRIBING TOPOGRAPHIC MAPS AND SYMBOLS IS AVAILABLE ON REQUEST

CONTOURS AND ELEVATIONS IN METERS

1992