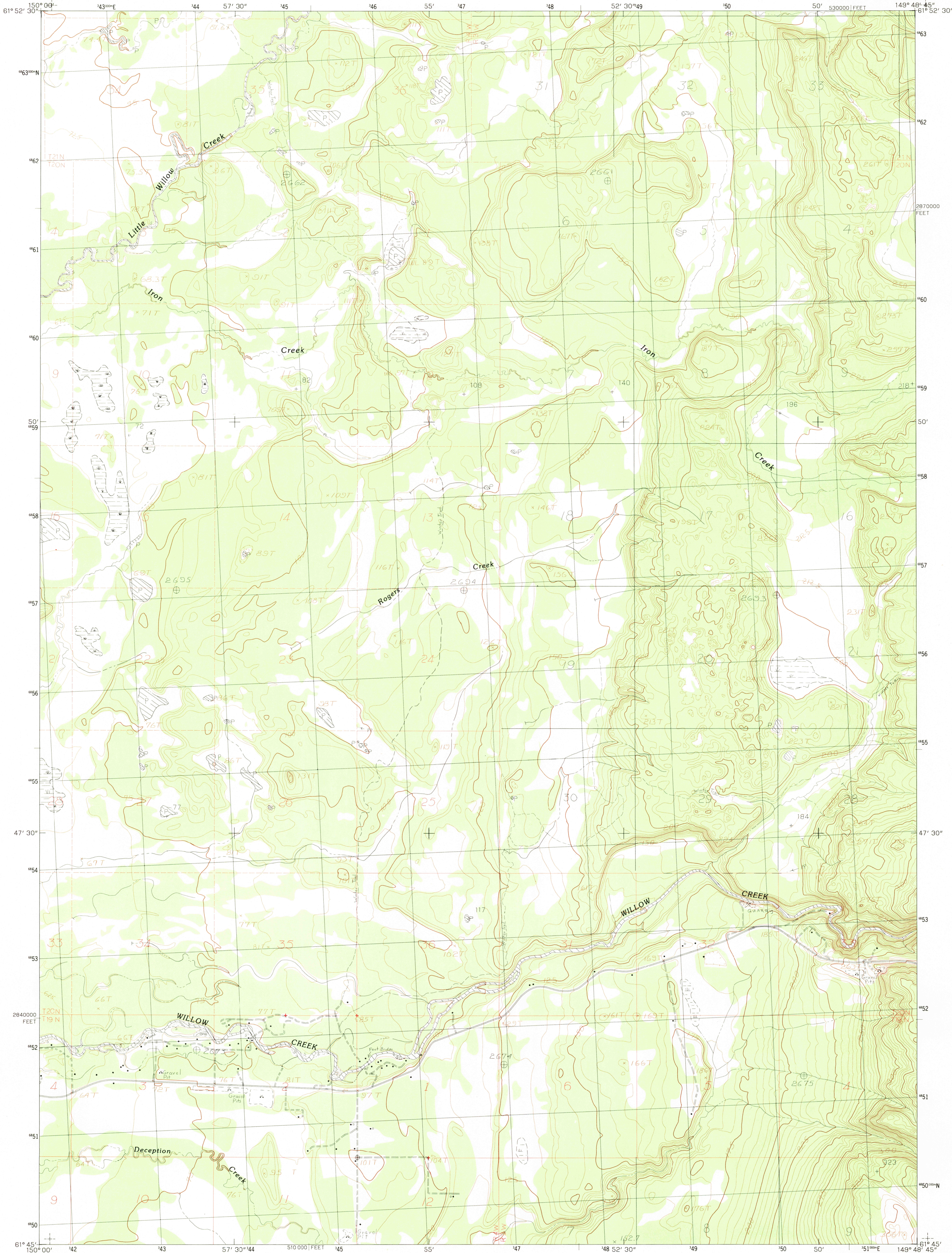


UNITED STATES
DEPARTMENT OF THE INTERIOR
GEOLOGICAL SURVEY

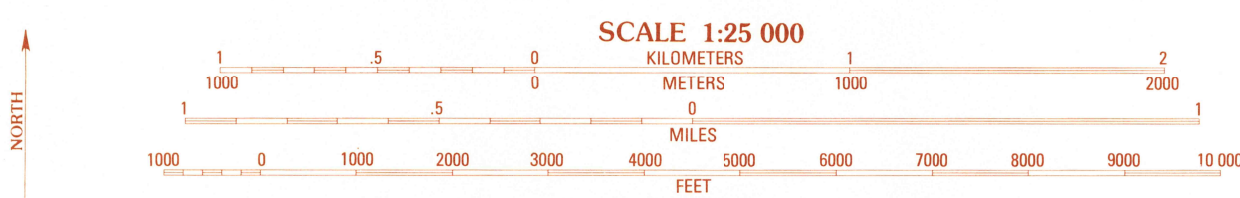
ANCHORAGE (D-8) SW QUADRANGLE
ALASKA-MATANUSKA-SUSITNA BOROUGH
1:25 000-SCALE SERIES (TOPOGRAPHIC)



PRODUCED BY THE UNITED STATES GEOLOGICAL SURVEY
CONTROL BY USGS, NOS-NOAA AND USGS
COMPILED FROM AERIAL PHOTOGRAPHS TAKEN 1977
FIELD CHECKED 1978 MAP EDITED 1983
PROJECTION UNIVERSAL TRANSVERSE MERCATOR
GRID: 1 000-METER UNIVERSAL TRANSVERSE MERCATOR
10,000-FOOT STATE GRID TICKS ALASKA, ZONE 4
UTM GRID DECLINATION 2°34' WEST
1983 MAGNETIC NORTH DECLINATION 25° EAST
VERTICAL DATUM NATIONAL GEODETIC VERTICAL DATUM OF 1929
HORIZONTAL DATUM 1927 NORTH AMERICAN DATUM
To place on the predicted North American Datum of 1983, move
the projection lines 63 meters north and 119 meters east
Gray land lines represent unsurveyed and unmarked locations pre-
determined by the Bureau of Land Management, Folio S-2, Seward
Meridian
There may be private inholdings within the boundaries of any Federal
or State reservations shown on this map
All streams and lakes are perennial

PROVISIONAL MAP
Produced from original
manuscript drawings. Infor-
mation shown as of date of
field check.

3



CONTOUR INTERVAL 5 METERS
DOTTED LINES REPRESENT 2.5-METER CONTOURS
CONTROL ELEVATIONS SHOWN TO THE NEAREST 0.1 METER
OTHER ELEVATIONS SHOWN TO THE NEAREST METER
To convert meters to feet multiply by 3.2808
To convert feet to meters multiply by .3048
THIS MAP COMPLIES WITH NATIONAL MAP ACCURACY STANDARDS
FOR SALE BY U.S. GEOLOGICAL SURVEY, FAIRBANKS, ALASKA 99701
DENVER, COLORADO 80225 OR RESTON, VIRGINIA 22092



1	2	3
4	5	6
7	8	

ADJOINING 7.5 QUADRANGLE NAMES

ROAD LEGEND
Improved Road
Unimproved Road
Trail
State Route

ANCHORAGE (D-8) SW, ALASKA
PROVISIONAL EDITION 1983

61149-G7-TM-025

RETURN TO:
NHD HISTORICAL MAP ARCHIVES
USGS NATIONAL CENTER, MS-522
RESTON, VA 22092

NOV 25 1983