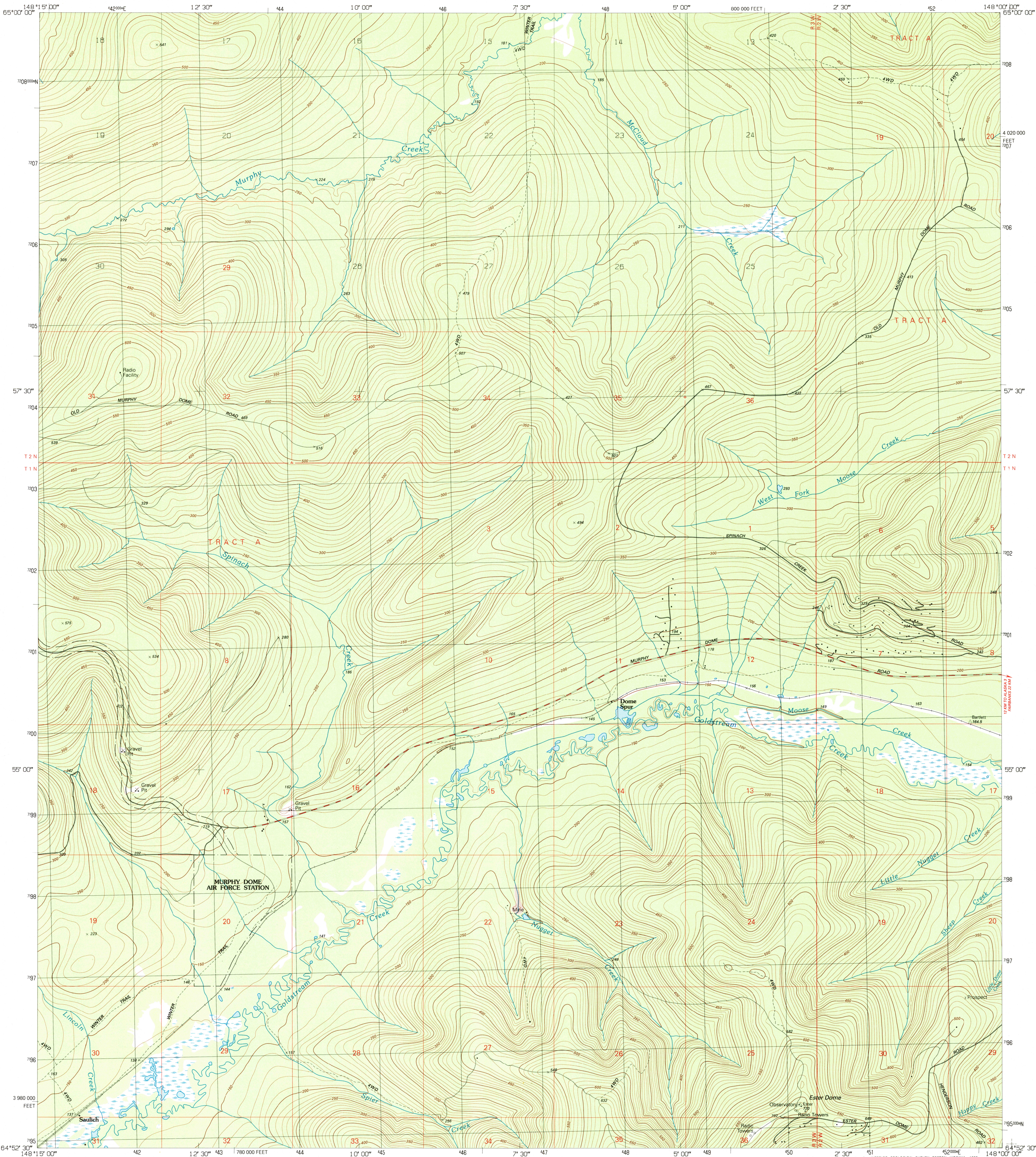


DEPARTMENT OF THE INTERIOR
UNITED STATES GEOLOGICAL SURVEY

FAIRBANKS (D-3) NE QUADRANGLE
ALASKA-FAIRBANKS NORTH STAR BOROUGH
1:25 000-SCALE SERIES (TOPOGRAPHIC)
NE/4 FAIRBANKS (D-3) 1:63 360 SCALE QUADRANGLE



Produced by the United States Geological Survey

Control by USGS and NOS/NOAA

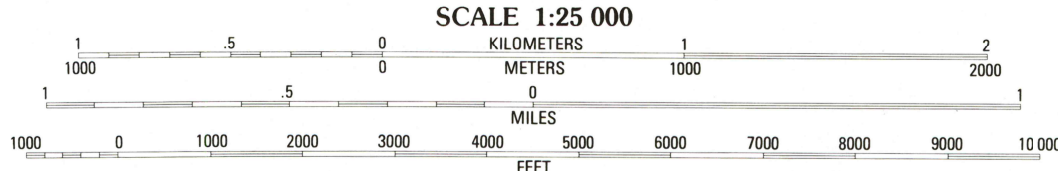
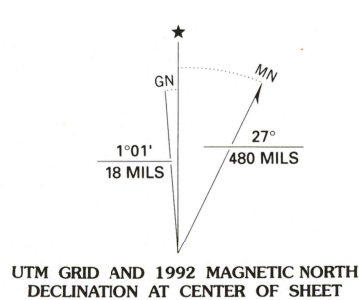
Compiled from aerial photographs taken 1985

Field checked 1987. Map edited 1992

North American Datum of 1927 (NAD 27). Projection and 1000-meter grid, Universal Transverse Mercator, zone 6 10 000-foot grid ticks based on Alaska Coordinate System, zone 4 The difference between NAD 27 and North American Datum of 1983 (NAD 83) for 7.5 minute intersections is given in USGS Bulletin 1875. The NAD 83 is shown by dashed corner ticks Gray land lines represent unsurveyed and unmarked locations predetermined by the Bureau of Land Management, Folio F-6 Fairbanks Meridian

Land lines are omitted in areas of extensive tract surveys

Swamps, as portrayed, indicate only the wetter areas, usually of low relief, as interpreted from aerial photographs



CONTOUR INTERVAL 10 METERS
NATIONAL GEODETIC VERTICAL DATUM OF 1929
CONTROL ELEVATIONS SHOWN TO THE NEAREST 0.1 METER
OTHER ELEVATIONS SHOWN TO THE NEAREST METER
To convert meters to feet multiply by 3.2808
To convert feet to meters multiply by .3048

THIS MAP COMPLIES WITH NATIONAL MAP ACCURACY STANDARDS
FOR SALE BY U.S. GEOLOGICAL SURVEY
FAIRBANKS, ALASKA 99701; DENVER, COLORADO 80225; OR RESTON, VIRGINIA 22092
A FOLDER DESCRIBING TOPOGRAPHIC MAPS AND SYMBOLS IS AVAILABLE ON REQUEST



QUADRANGLE LOCATION		
1	2	3
4	5	6
7	8	

ADJOINING 7.5' QUADRANGLE NAMES
CONTOURS AND ELEVATIONS
IN METERS

ROAD CLASSIFICATION
Primary highway, hard surface
Secondary highway, hard surface
Interstate Route
U. S. Route
State Route
Light-duty road, hard or improved surface
Unimproved road

FAIRBANKS (D-3) NE, ALASKA
NE/4 FAIRBANKS (D-3) 1:63 360 SCALE QUADRANGLE
64148-H1-TM-025

1992

