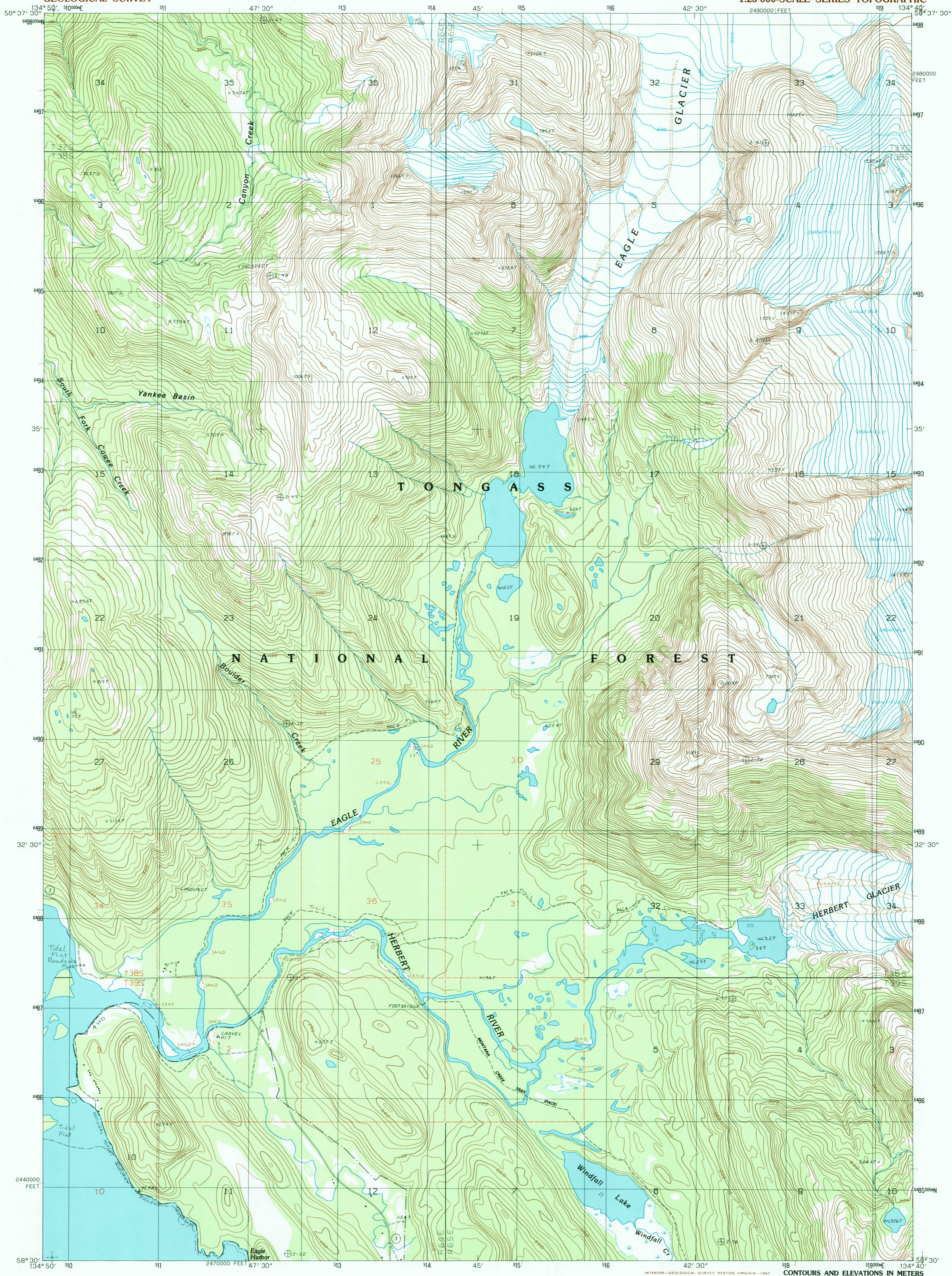


UNITED STATES
DEPARTMENT OF THE INTERIOR
GEOLOGICAL SURVEY

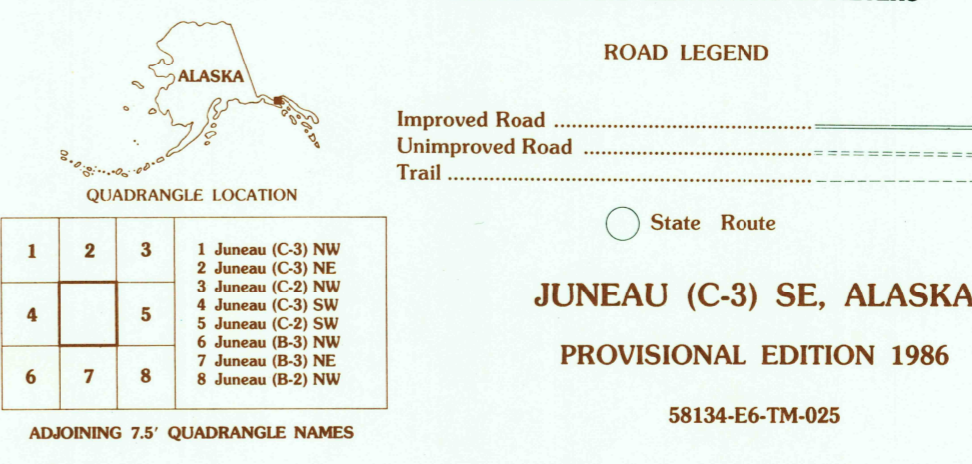
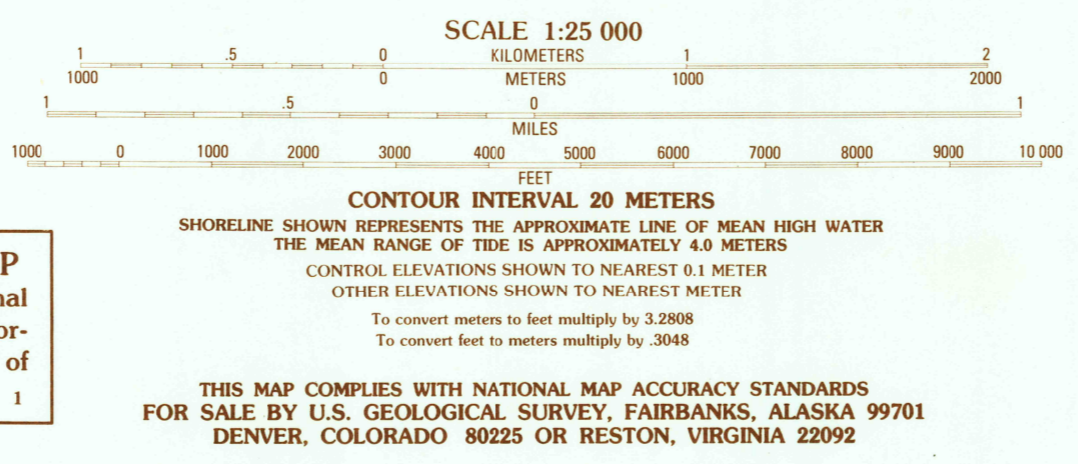
JUNEAU (C-3) SE QUADRANGLE
ALASKA—CITY AND BOROUGH OF JUNEAU
1:25 000-SCALE SERIES TOPOGRAPHIC



PRODUCED BY THE UNITED STATES GEOLOGICAL SURVEY
CONTROL BY USGS, NOS/NOAA
COMPILED FROM AERIAL PHOTOGRAPHS TAKEN 1982
FIELD CHECKED 1984 MAP EDITED 1986
PROJECTION UNIVERSAL TRANSVERSE MERCATOR
GRID 1000-METER UNIVERSAL TRANSVERSE MERCATOR
ALASKA, ZONE 1
10,000-FOOT STATE GRID TICKS
UTM GRID DECLINATION 013° EAST
1986 MAGNETIC NORTH DECLINATION 28° EAST
VERTICAL DATUM NATIONAL GEODETIC VERTICAL DATUM OF 1929
HORIZONTAL DATUM 1927 NORTH AMERICAN DATUM
To place on the predicted North American Datum of 1983,
move the projection lines as shown by dashed corner ticks
(37 meters north and 105 meters east)
Gray land lines represent unsurveyed and unmarked locations pre-
determined by the Bureau of Land Management, Folios CR-11 and
CR-12, Copper River Meridian
There may be private inholdings within the boundaries of any
Federal and State Reservations shown on this map
Federal Reservation boundaries established by the Alaska National
Interest Lands Conservation Act, PL 96-487, Dec. 2, 1980, are shown
as compiled by the administering agencies
The Alaska Maritime National Wildlife Refuge consists of all the
public land in the coastal waters and adjacent seas of Alaska
consisting of islands, islets, rocks, reefs, capes and spires, as well as
designated mainland areas

PROVISIONAL MAP
Produced from original
manuscript drawings. Infor-
mation shown as of date of
photography.

Swamps, as portrayed, indicate only the wetter areas, usually of low
relief, as interpreted from aerial photographs



JUNEAU (C-3) SE, ALASKA
PROVISIONAL EDITION 1986

58134-E6-TM-025

