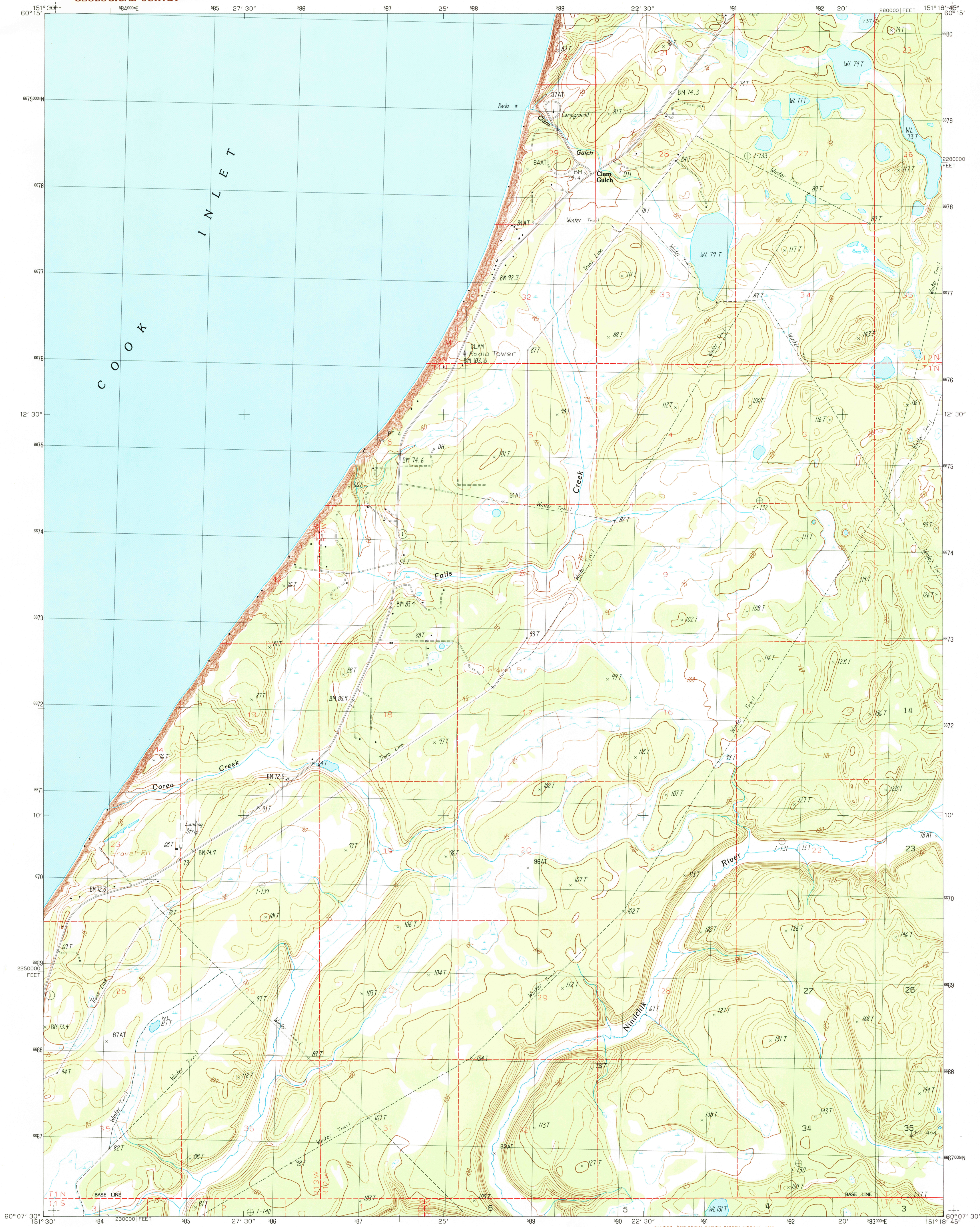


UNITED STATES
DEPARTMENT OF THE INTERIOR
GEOLOGICAL SURVEY

KENAI (A-4) NW QUADRANGLE
ALASKA-KENAI PENINSULA BOROUGH
1:25 000-SCALE SERIES (TOPOGRAPHIC)



PRODUCED BY THE UNITED STATES GEOLOGICAL SURVEY
CONTROL BY USGS, NOS/NOAA, AND BLM
FIELD CHECKED 1984. MAP EDITED 1987
PROJECTION 1000-METER UNIVERSAL TRANSVERSE MERCATOR
GRID: 1000-METER UNIVERSAL TRANSVERSE MERCATOR
HORIZONTAL DATUM 1927 NORTH AMERICAN DATUM
UTM GRID DECLINATION 123° EAST
1987 MAGNETIC NORTH DECLINATION 23°30' EAST
VERTICAL DATUM 1929
To place on the predicted North American Datum of 1983,
move the projection lines as shown by dashed corner ticks
(69 meters north and 122 meters east)
Gray land lines represent unsurveyed and unmarked locations pre-
determined by the Bureau of Land Management, Folio S-16, Seward
Meridian
There may be private inholdings within the boundaries of any
Federal and State Reservations shown on this map
Swamps, as portrayed, indicate only the wetter areas, usually of low
relief, as interpreted from aerial photographs

PROVISIONAL MAP
Produced from original
manuscript drawings. Infor-
mation shown as of date of
field check. 2



THIS MAP COMPLIES WITH NATIONAL MAP ACCURACY STANDARDS
FOR SALE BY U.S. GEOLOGICAL SURVEY, FAIRBANKS, ALASKA 99701
DENVER, COLORADO 80225 OR RESTON, VIRGINIA 22092



1	2	3	1
2	3	4	2
3	4	5	3
4	5	6	4
5	6	7	5
6	7	8	6
7	8		7
8			8

CONTOURS AND ELEVATIONS IN METERS
ROAD LEGEND

Improved Road
Unimproved Road
Trail
State Route

KENAI (A-4) NW, ALASKA
PROVISIONAL EDITION 1987

60151-B3-TM-025

