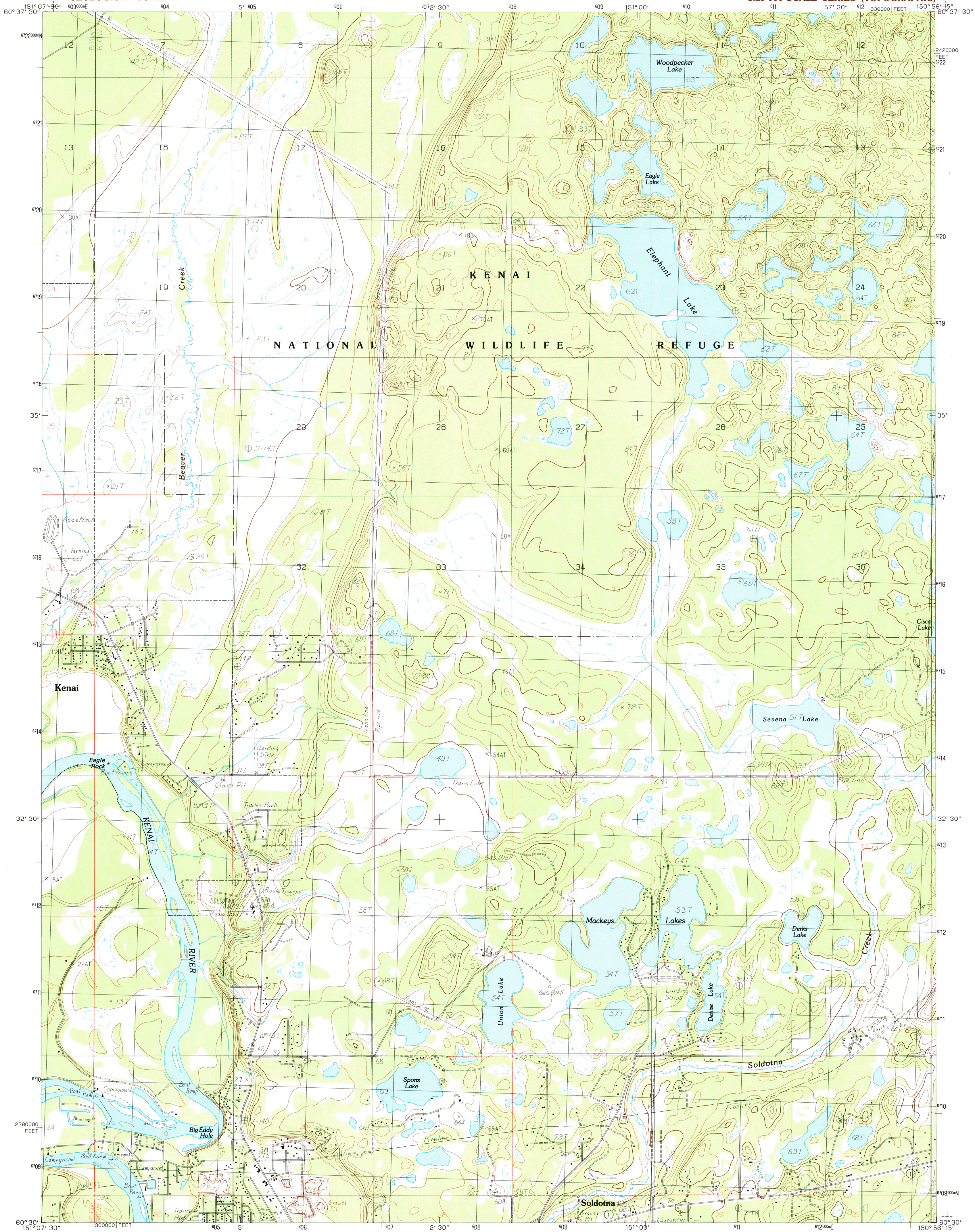


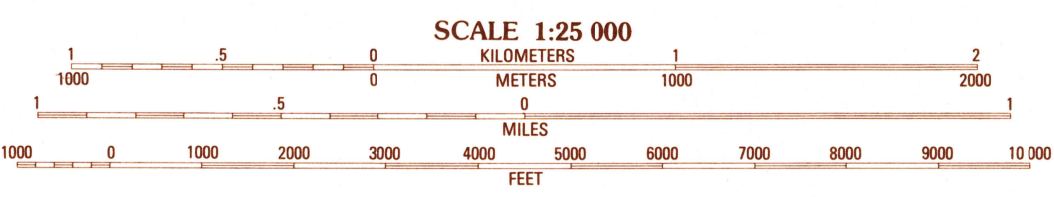
UNITED STATES
DEPARTMENT OF THE INTERIOR
GEOLOGICAL SURVEY

KENAI (C-3) SW QUADRANGLE
ALASKA—KENAI PENINSULA BOROUGH
1:25 000-SCALE SERIES (TOPOGRAPHIC)



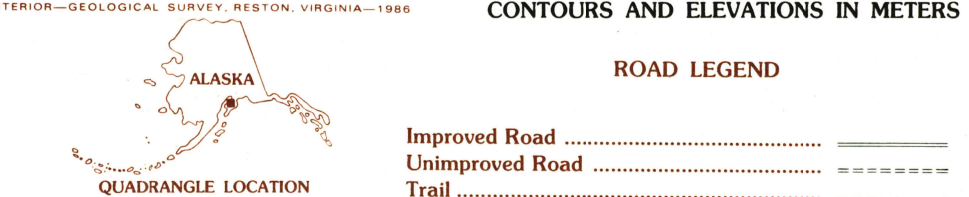
PRODUCED BY THE UNITED STATES GEOLOGICAL SURVEY
CONTROL BY USGS, NOS/NOAA AND USCE
COMPILED FROM AERIAL PHOTOGRAPHS TAKEN 1975
FIELD CHECKED 1986 MAP EDITED 1986
PROJECTION UNIVERSAL TRANSVERSE MERCATOR
GRID: 1000-METER UNIVERSAL TRANSVERSE MERCATOR ZONE 5
10,000-FOOT STATE GRID TICKS ALASKA ZONE 4
UTM GRID DECLINATION 24° EAST
1986 MAGNETIC NORTH DECLINATION 24° EAST
VERTICAL DATUM NATIONAL GEODETIC VERTICAL DATUM OF 1929
HORIZONTAL DATUM 1987 NORTH AMERICAN DATUM
To place on the predicted North American Datum of 1983,
move the projection lines as shown by dashed corner ticks
(68 meters north and 121 meters east)
Land lines represent unsurveyed and unmarked locations pre-
determined by the Bureau of Land Management, Folio K-16, Seward
Meridian
There may be private inholdings within the boundaries of any
Federal or State Reservations shown on this map
Federal Reservations boundaries established by the Alaska National
Interest Lands Conservation Act, PL 96-487, Dec. 2, 1980, are
shown
as compiled by the administering agencies
Swamps, as portrayed, indicate only the wetter areas, usually of low
relief, as interpreted from aerial photographs

PROVISIONAL MAP
Produced from original
manuscript drawings. Infor-
mation shown as of date of
field check.



SCALE 1:25 000
CONTOUR INTERVAL 5 METERS
SUPPLEMENTAL CONTOUR INTERVAL 2.5 METERS
CONTROL ELEVATIONS SHOWN TO THE NEAREST 0.1 METER
OTHER ELEVATIONS SHOWN TO THE NEAREST METER
To convert meters to feet multiply by 3.2808
To convert feet to meters multiply by .3048

THIS MAP COMPLIES WITH NATIONAL MAP ACCURACY STANDARDS
FOR SALE BY U.S. GEOLOGICAL SURVEY, FAIRBANKS, ALASKA 99701
DENVER, COLORADO 80225 OR RESTON, VIRGINIA 22092



1	2	3	1 Kenai (C-4) NE
2	3	4	2 Kenai (C-3) NW
3	4	5	3 Kenai (C-3) NE
4	5	6	4 Kenai (C-4) SE
5	6	7	5 Kenai (C-3) SE
6	7	8	6 Kenai (B-4) NE
7	8		7 Kenai (B-3) NW
8			8 Kenai (B-3) NE

KENAI (C-3) SW, ALASKA
PROVISIONAL EDITION 1986

60150-E8-TM-025

