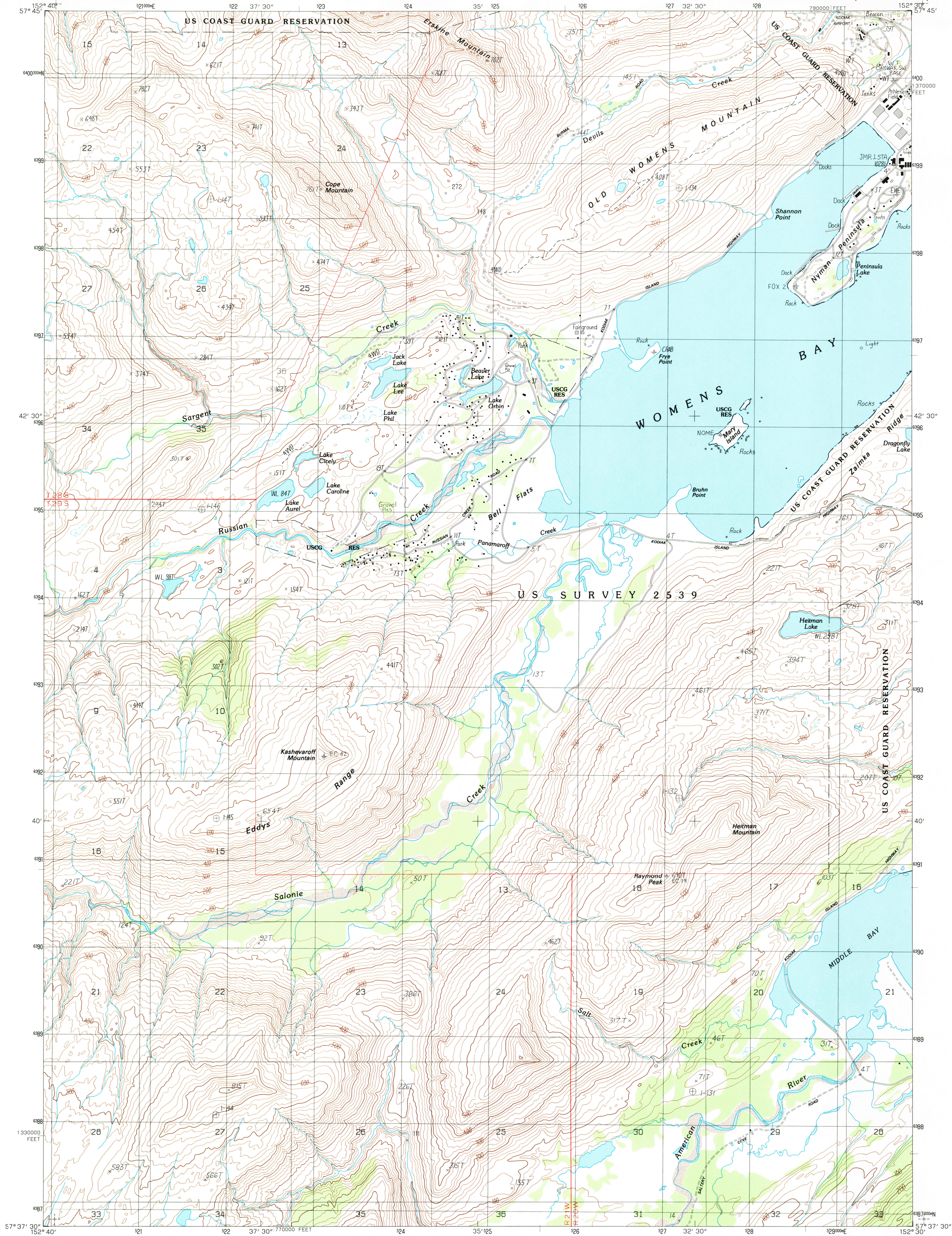


UNITED STATES
DEPARTMENT OF THE INTERIOR
GEOLOGICAL SURVEY

KODIAK (C-2) NW QUADRANGLE
ALASKA-KODIAK ISLAND BOROUGH
1:25 000-SCALE SERIES (TOPOGRAPHIC)



PRODUCED BY THE UNITED STATES GEOLOGICAL SURVEY
CONTROL BY USGS, NOS/NOAA, DMA, AND BLM
COMPILED FROM AERIAL PHOTOGRAPHS TAKEN 1981
FIELD CHECKED 1984 MAP EDITED 1987
PROJECTION UNIVERSAL TRANSVERSE MERCATOR
GRID 1000-METER UNIVERSAL TRANSVERSE MERCATOR
ALASKA, ZONE 5
10,000-FOOT STATE GRID TICKS
UTM GRID DECLINATION 1987 EAST
1987 MAGNETIC NORTH DECLINATION 22° EAST
VERTICAL DATUM NATIONAL GEODETIC VERTICAL DATUM OF 1929
HORIZONTAL DATUM 1927 NORTH AMERICAN DATUM
To place on the predicted North American Datum of 1983,
move the projection lines as shown by dashed corner ticks
(87 meters north and 128 meters east)
Gray land lines represent unsurveyed and unmarked locations pre-
determined by the Bureau of Land Management, Folio S-23,
Seward Meridian
There may be private inholdings within the boundaries of any
Federal and State Reservations shown on this map
The Alaska Maritime National Wildlife Refuge consists of all the
public land in the coastal waters and adjacent seas of Alaska
consisting of islands, islets, rocks, reefs, capes and spires, as well
as designated mainland areas
Land lines are omitted in areas of tracts

PROVISIONAL MAP
Produced from original
manuscript drawings. Information
shown as of date of
photography.

Swamps, as portrayed, indicate only
the wetter areas, usually of low relief
as interpreted from aerial photographs

SCALE 1:25 000
KILOMETERS
METERS
MILES
FEET
CONTOUR INTERVAL 20 METERS
SHORELINE SHOWN REPRESENTS THE APPROXIMATE LINE OF MEAN HIGH WATER
THE MEAN RANGE OF TIDE IS APPROXIMATELY 2.1 METERS
CONTROL ELEVATIONS SHOWN TO THE NEAREST 0.1 METER
OTHER ELEVATIONS SHOWN TO THE NEAREST METER
To convert meters to feet multiply by 3.2808
To convert feet to meters multiply by .3048
THIS MAP COMPLIES WITH NATIONAL MAP ACCURACY STANDARDS
FOR SALE BY U.S. GEOLOGICAL SURVEY, FAIRBANKS, ALASKA 99701
DENVER, COLORADO 80225 OR RESTON, VIRGINIA 22092

QUADRANGLE LOCATION							
1	2	3	4	5	6	7	8
1 Kodiak (D-3) SE	2 Kodiak (D-3) SW	3 Kodiak (D-2) SE	4 Kodiak (C-3) NE	5 Kodiak (C-2) NE	6 Kodiak (C-3) SE	7 Kodiak (C-2) SW	8 Kodiak (C-2) SE

ADJOINING 7.5' QUADRANGLE NAMES

CONTOURS AND ELEVATIONS IN METERS
ROAD LEGEND

Improved Road
Unimproved Road
Trail

KODIAK (C-2) NW, ALASKA
PROVISIONAL EDITION 1987

57152-F5-TM-025

