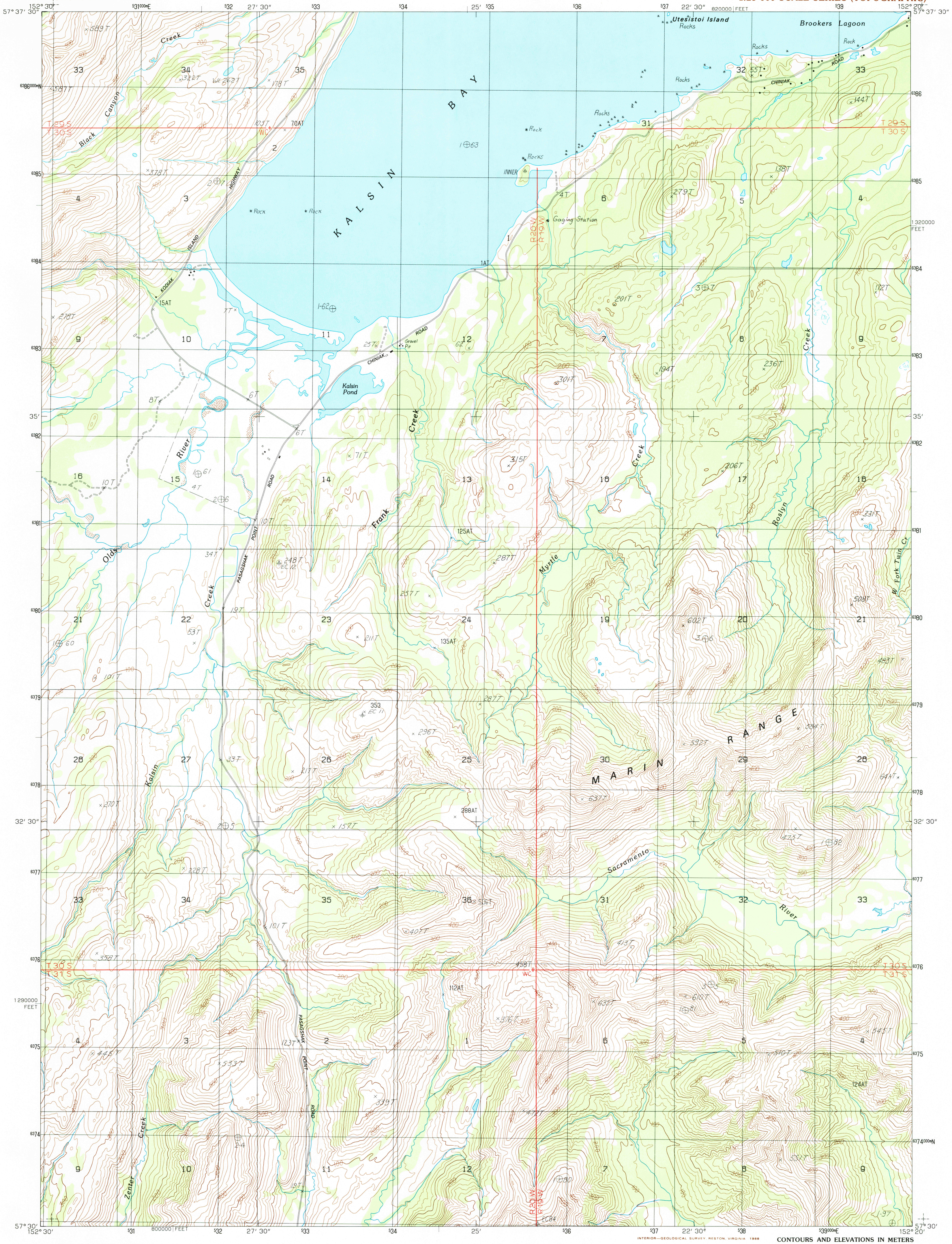


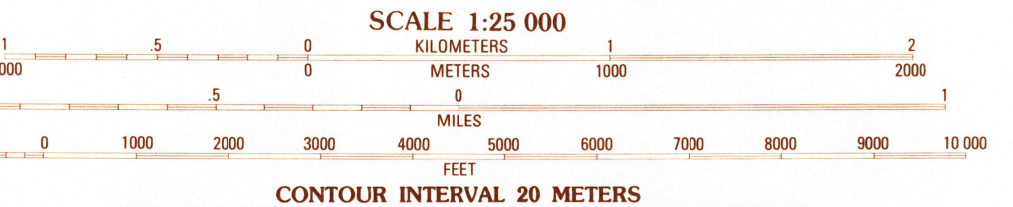
UNITED STATES  
DEPARTMENT OF THE INTERIOR  
GEOLOGICAL SURVEY

KODIAK (C-2) SE QUADRANGLE  
ALASKA-KODIAK ISLAND BOROUGH  
1:25 000-SCALE SERIES (TOPOGRAPHIC)



PRODUCED BY THE UNITED STATES GEOLOGICAL SURVEY  
CONTROL BY USGS, NOS/NOAA AND BLM  
COMPILED FROM AERIAL PHOTOGRAPHS TAKEN 1981-83  
FIELD CHECKED 1984 MAP EDITED 1987  
PROJECTION UNIVERSAL TRANSVERSE MERCATOR  
GRID: 1000-METER UNIVERSAL TRANSVERSE MERCATOR ZONE 5  
10,000-FOOT STATE GRID TICKS ALASKA, ZONE 5  
UTM GRID DECLINATION 0300 EAST  
1987 MAGNETIC NORTH DECLINATION 22' EAST  
VERTICAL DATUM NATIONAL GEODETIC VERTICAL DATUM OF 1929  
HORIZONTAL DATUM 1927 NORTH AMERICAN DATUM  
To place on the predicted North American Datum of 1983,  
move the projection lines as shown by dashed corner ticks  
(84 meters north and 128 meters east)  
Gray land lines represent unsurveyed and unmarked locations pre-  
determined by the Bureau of Land Management, Folio S-23, Seward  
Meridian  
There may be private inholdings within the boundaries of any  
Federal and State Reservations shown on this map  
The Alaska Maritime National Wildlife Refuge consists of all the  
public land in the coastal waters and adjacent seas of Alaska  
consisting of islands, islets, rocks, reefs, capes and spires, as well  
as designated mainland areas  
Swamps, as portrayed, indicate only the wetter areas, usually of low  
relief, as interpreted from aerial photographs

**PROVISIONAL MAP**  
Produced from original  
manuscript drawings. Infor-  
mation shown as of date of  
photography.



**SCALE 1:25 000**  
KILOMETERS 0 1 2  
METERS 0 1000 2000  
FEET 0 1000 2000 3000 4000 5000 6000 7000 8000 9000 10 000

**CONTOUR INTERVAL 20 METERS**  
SHORELINE SHOWN REPRESENTS THE APPROXIMATE LINE OF MEAN HIGH WATER  
THE MEAN RANGE OF TIDE IS APPROXIMATELY 2.0 METERS  
CONTROL ELEVATIONS SHOWN TO THE NEAREST 0.1 METER  
OTHER ELEVATIONS SHOWN TO THE NEAREST METER  
To convert meters to feet multiply by 3.2808  
To convert feet to meters multiply by .3048

**THIS MAP COMPLIES WITH NATIONAL MAP ACCURACY STANDARDS  
FOR SALE BY U.S. GEOLOGICAL SURVEY, FAIRBANKS, ALASKA 99701  
DENVER, COLORADO 80225 OR RESTON, VIRGINIA 22092**



QUADRANGLE LOCATION

1	2	3	1 Kodiak (C-2) NW
2	3	4	2 Kodiak (C-2) NE
3	4	5	3 Kodiak (C-1) NW
4	5	6	4 Kodiak (C-1) NE
5	6	7	5 Kodiak (B-2) NW
6	7	8	6 Kodiak (B-2) NE
7	8		7 Kodiak (B-1) NW
8			8 Kodiak (B-1) NE

ADJOINING 7.5' QUADRANGLE NAMES

**KODIAK (C-2) SE, ALASKA**  
PROVISIONAL EDITION 1987

57152-E3-TM-025

