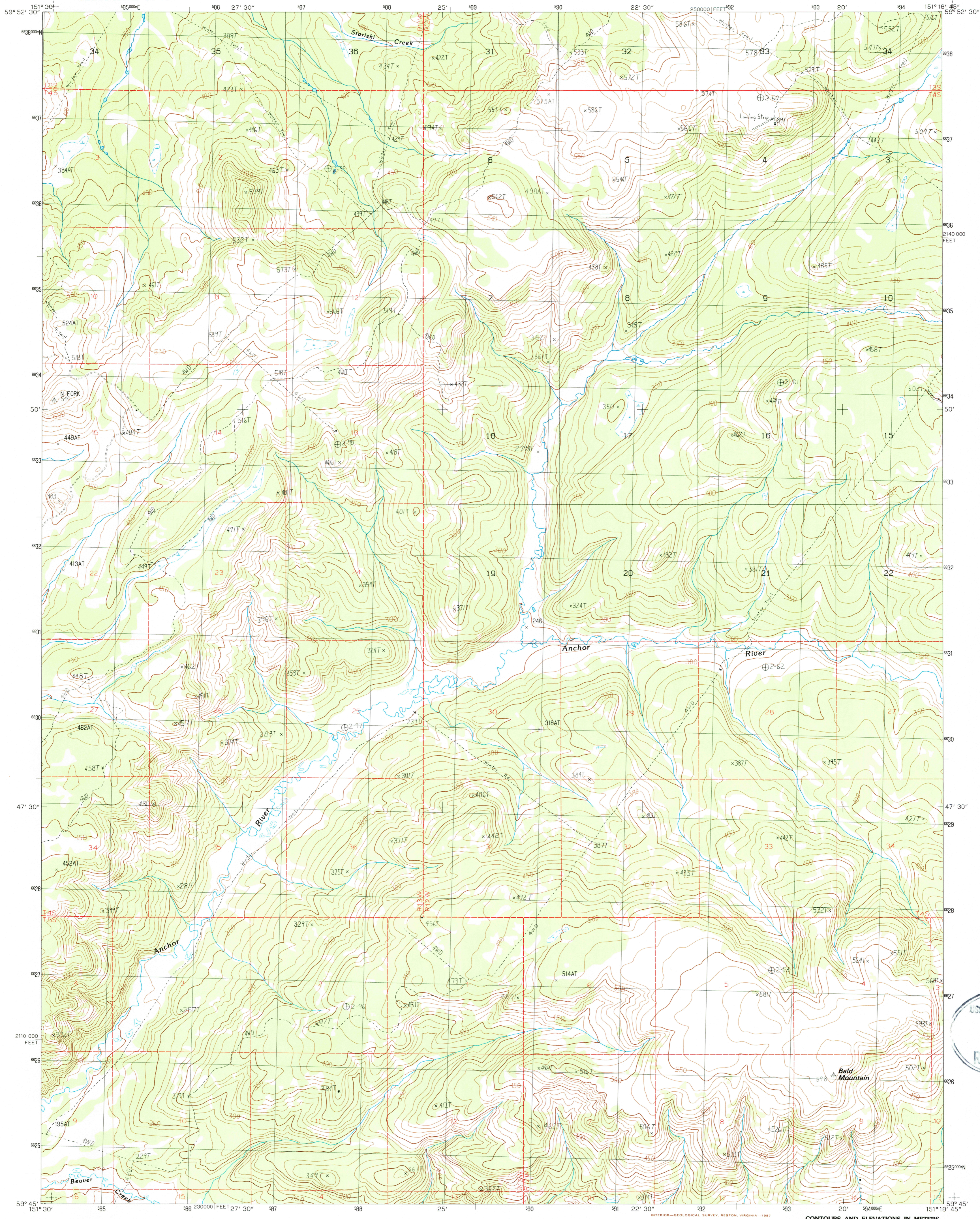


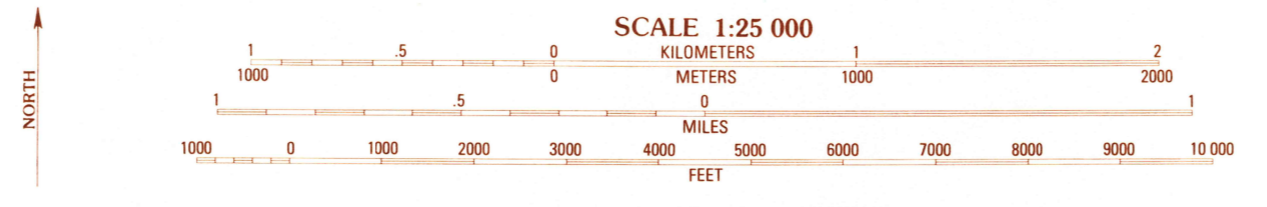
UNITED STATES
DEPARTMENT OF THE INTERIOR
GEOLOGICAL SURVEY

SELDOVIA (D-4) SW QUADRANGLE
ALASKA-KENAI PENINSULA BOROUGH
1:25 000-SCALE SERIES (TOPOGRAPHIC)



USGS NMD (D-4) SW MAP
SEP 18 1987
REC'D FILE COPY

PRODUCED BY THE UNITED STATES GEOLOGICAL SURVEY
CONTROL BY USGS, NOS/NOAA AND USACE
COMPILED FROM AERIAL PHOTOGRAPHS TAKEN 1980
FIELD CHECKED 1984. MAP EDITED 1987
PROJECTION UNIVERSAL TRANSVERSE MERCATOR
GRID: 1000-METER UNIVERSAL TRANSVERSE MERCATOR
10,000-FOOT STATE GRID TICKS ALASKA, ZONE 4
UTM GRID DECLINATION 123° EAST
1987 MAGNETIC NORTH DECLINATION 23°30' EAST
VERTICAL DATUM NATIONAL GEODETIC VERTICAL DATUM OF 1929
HORIZONTAL DATUM 1927 NORTH AMERICAN DATUM
To place on the predicted North American Datum of 1983,
move the projection lines as shown by dashed corner ticks
(70 meters north and 122 meters east)
Gray land lines represent unsurveyed and unmarked locations pre-
determined by the Bureau of Land Management, Folio S-16, Seward
Meridian
There may be private inholdings within the boundaries of any
Federal and State Reservations shown on this map
Swamps, as portrayed, indicate only the wetter areas, usually of low
relief, as interpreted from aerial photographs



CONTOUR INTERVAL 10 METERS
CONTROL ELEVATIONS SHOWN TO THE NEAREST 0.1 METER
OTHER ELEVATIONS SHOWN TO THE NEAREST METER
To convert meters to feet multiply by 3.2808
To convert feet to meters multiply by .3048

THIS MAP COMPLIES WITH NATIONAL MAP ACCURACY STANDARDS
FOR SALE BY U.S. GEOLOGICAL SURVEY, FAIRBANKS, ALASKA 99701
DENVER, COLORADO 80225 OR RESTON, VIRGINIA 22092



QUADRANGLE LOCATION

1	2	3	1 Seldovia (D-5) NE 2 Seldovia (D-4) NW 3 Seldovia (D-4) NE
4	5	6	4 Seldovia (D-5) SE 5 Seldovia (D-4) SE 6 Seldovia (C-5) NE
6	7	8	7 Seldovia (C-4) NW 8 Seldovia (C-4) NE

ADJOINING 7.5' QUADRANGLE NAMES

CONTOURS AND ELEVATIONS IN METERS
ROAD LEGEND
Unimproved Road
Trail

SELDOVIA (D-4) SW, ALASKA
PROVISIONAL EDITION 1987

59151-G3-TM-025