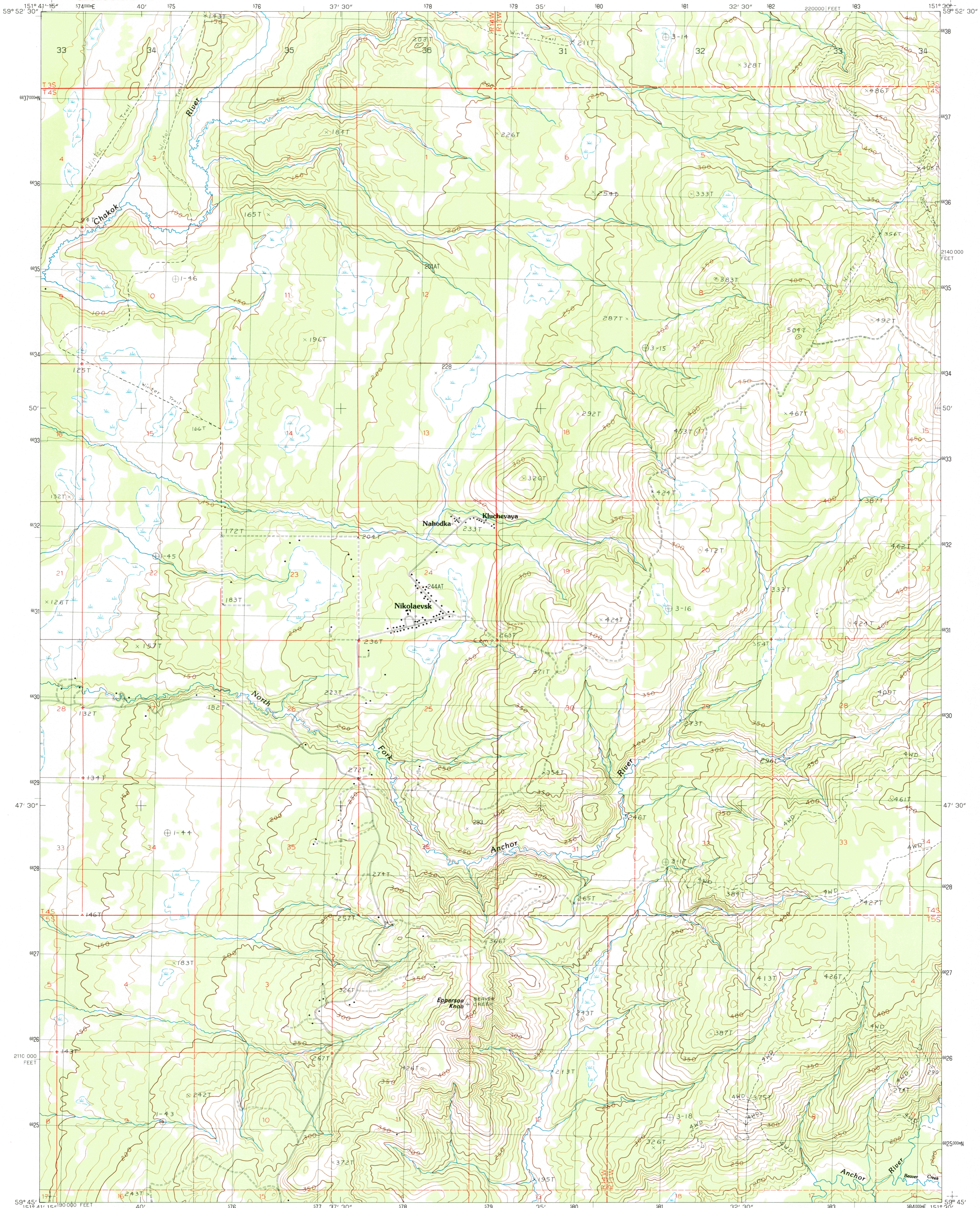


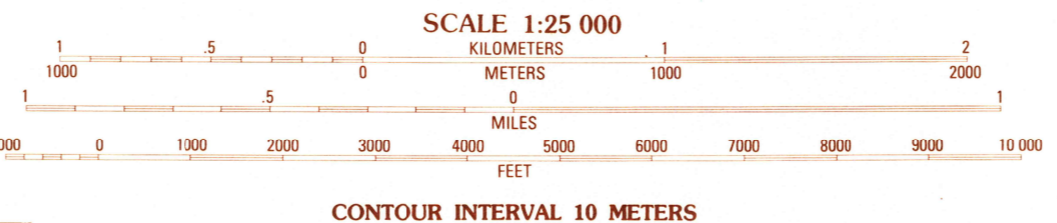
UNITED STATES  
DEPARTMENT OF THE INTERIOR  
GEOLOGICAL SURVEY

SELDOVIA (D-5) SE QUADRANGLE  
ALASKA-KENAI PENINSULA BOROUGH  
1:25 000-SCALE SERIES (TOPOGRAPHIC)



PRODUCED BY THE UNITED STATES GEOLOGICAL SURVEY  
CONTROL BY USGS, NOS/NOAA  
COMPILED FROM AERIAL PHOTOGRAPHS TAKEN 1980  
FIELD CHECKED 1984. MAP EDITED 1987  
PROJECTION UNIVERSAL TRANSVERSE MERCATOR  
GRID 1000-METER UNIVERSAL TRANSVERSE MERCATOR  
100000-FOOT STATE GRID TICKS ALASKA, ZONE 5  
UTM GRID DECLINATION 1°13' EAST  
1987 MAGNETIC NORTH DECLINATION 23°30' EAST  
VERTICAL DATUM NATIONAL GEODETIC VERTICAL DATUM OF 1989  
HORIZONTAL DATUM 1927 NORTH AMERICAN DATUM  
To place on the predicted North American Datum of 1983,  
move the projection lines as shown by dashed corner ticks  
(71 meters north and 123 meters east)  
Gray land lines represent unsurveyed and unmarked locations pre-  
determined by the Bureau of Land Management, Folio S-16, Seward  
Meridian  
There may be private inholdings within the boundaries of any  
Federal and State reservations shown on this map  
Swamps, as portrayed, indicate only the wetter areas, usually of low  
relief, as interpreted from aerial photographs

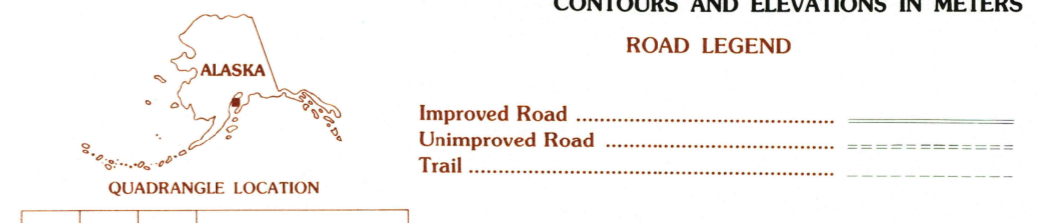
**PROVISIONAL MAP**  
Produced from original  
manuscript drawings. Infor-  
mation shown as of date of  
field check. 2



SCALE 1:25 000

CONTROL ELEVATIONS SHOWN TO THE NEAREST 0.1 METER  
OTHER ELEVATIONS SHOWN TO THE NEAREST METER  
To convert meters to feet multiply by 3.2808  
To convert feet to meters multiply by .3048

THIS MAP COMPLIES WITH NATIONAL MAP ACCURACY STANDARDS  
FOR SALE BY U.S. GEOLOGICAL SURVEY, FAIRBANKS, ALASKA 99701  
DENVER, COLORADO 80225 OR RESTON, VIRGINIA 22092



QUADRANGLE LOCATION

1	2	3	1 Seldovia (D-5) NW
2	3	4	2 Seldovia (D-5) NE
3	4	5	3 Seldovia (D-4) NW
4	5	6	4 Seldovia (D-5) SW
5	6	7	5 Seldovia (D-4) SW
6	7	8	6 Seldovia (C-5) NW
7	8		7 Seldovia (C-5) NE
8			8 Seldovia (C-4) NW

ADJOINING 7.5' QUADRANGLE NAMES

SELDOVIA (D-5) SE, ALASKA  
PROVISIONAL EDITION 1987

59151-G5-TM-025

