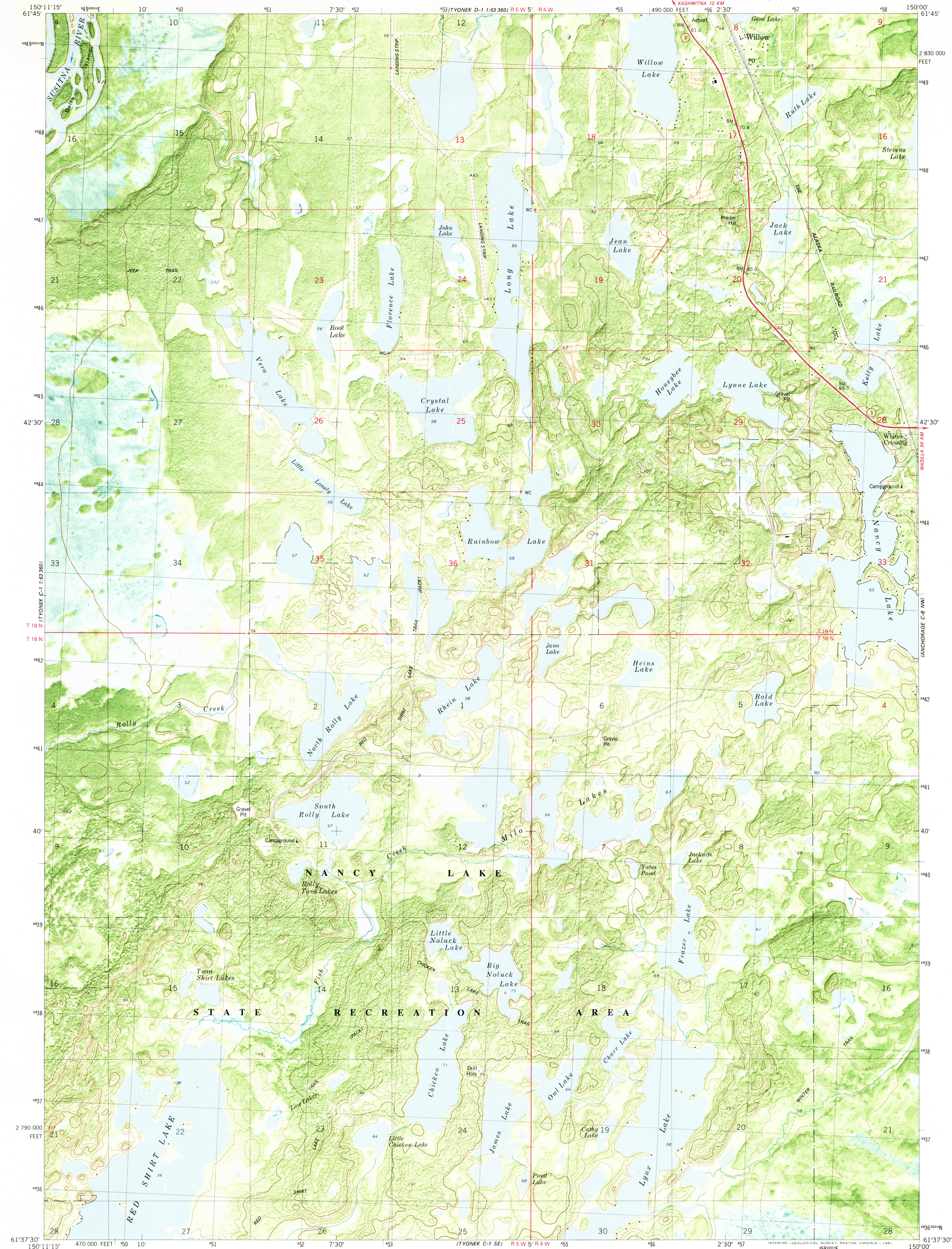


(TYONEK D-1)
1:63 360

UNITED STATES
DEPARTMENT OF THE INTERIOR
GEOLOGICAL SURVEY

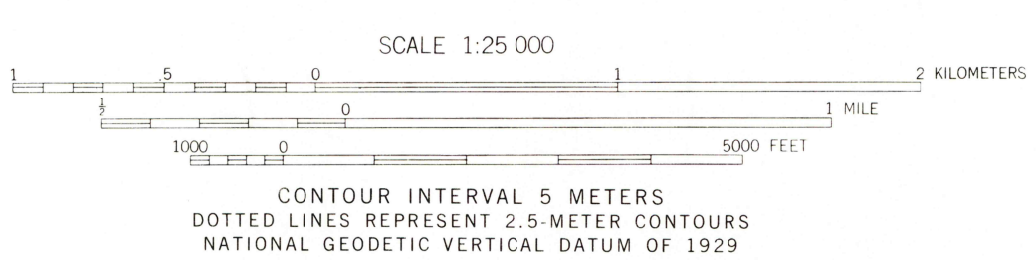
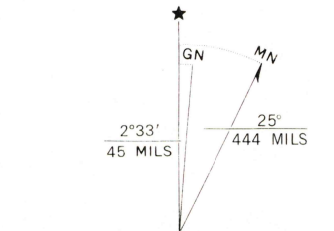
TYONEK (C-1) NE QUADRANGLE
ALASKA—MATANUSKA-SUSITNA BOROUGH
1:25 000-SCALE SERIES ORTHOPHOTOMAP (TOPOGRAPHIC)
NE/4 TYONEK (C-1) 1:63 360-SCALE QUADRANGLE

(ANCHORAGE D-8)
1:63 360



(TYONEK C-1)
1:63 360

Mapped, edited, and published by the Geological Survey
Control by USGS and NOS/NOAA
Topography by photogrammetric methods from aerial photographs taken 1972. Orthophotomosaic from aerial photographs taken 1974. Field checked 1973. Map edited 1979.
Projection and 10,000-foot grid ticks: Alaska coordinate system, zone 4 (transverse Mercator).
1000-meter Universal Transverse Mercator grid, zone 5
1927 North American datum
Gray land lines represent unsurveyed and unmarked locations predetermined by the Bureau of Land Management Folio S-2, Seward Meridian
There may be private inholdings within the boundaries of the National or State reservations shown on this map



THIS MAP COMPLIES WITH NATIONAL MAP ACCURACY STANDARDS
FOR SALE BY U.S. GEOLOGICAL SURVEY
FAIRBANKS, ALASKA 99701, DENVER, COLORADO 80225, OR RESTON, VIRGINIA 22092
A FOLDER DESCRIBING TOPOGRAPHIC MAPS AND SYMBOLS IS AVAILABLE ON REQUEST



ROAD CLASSIFICATION	
Primary highway, hard surface	Light duty road, hard or improved surface
Secondary highway, hard surface	Unimproved road
	State Route

TYONEK (C-1) NE, ALASKA
NE/4 TYONEK (C-1) 1:63 360-SCALE QUADRANGLE
N6137.5°W15000/7.5x11.25

CONTOURS AND ELEVATIONS IN METERS

1979

JUN 21 1982

1540