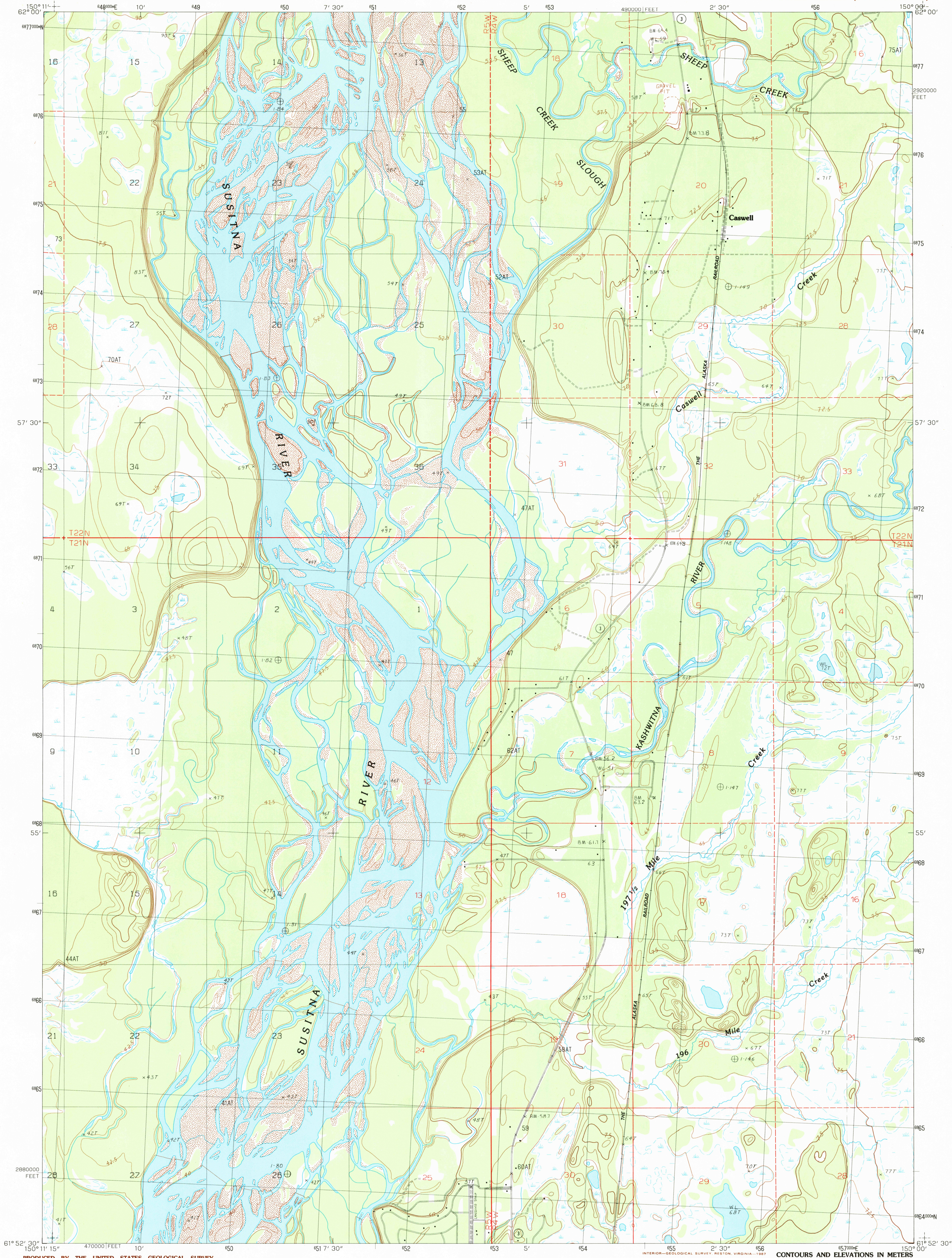


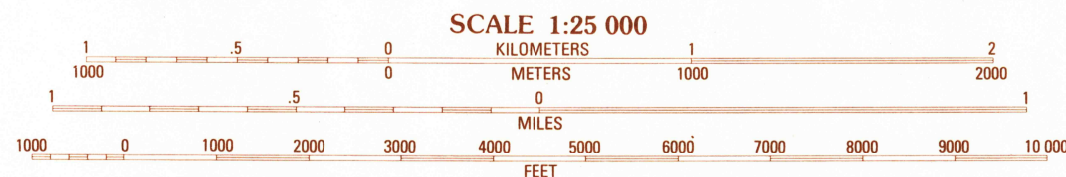
UNITED STATES
DEPARTMENT OF THE INTERIOR
GEOLOGICAL SURVEY

TYONEK (D-1) NE QUADRANGLE
ALASKA-MATANUSKA-SUSITNA BOROUGH
1:25 000-SCALE SERIES (TOPOGRAPHIC)



PRODUCED BY THE UNITED STATES GEOLOGICAL SURVEY
CONTROL BY USGS, NOS/NOAA
COMPILED FROM AERIAL PHOTOGRAPHS TAKEN 1981
FIELD CHECKED 1982 MAP EDITED 1987
PROJECTION UNIVERSAL TRANSVERSE MERCATOR
GRID: 1000-METER UNIVERSAL TRANSVERSE MERCATOR ZONE 5
10,000-FOOT STATE GRID TICKS ALASKA, ZONE 4
UTM GRID DECLINATION 25° EAST
1987 MAGNETIC NORTH DECLINATION 25° EAST
VERTICAL DATUM NATIONAL GEODETIC VERTICAL DATUM OF 1929
HORIZONTAL DATUM 1927 NORTH AMERICAN DATUM
To place on the predicted North American Datum of 1983,
move the projection lines as shown by dashed corner ticks
(63 meters north and 119 meters east)
Gray land lines represent unsurveyed and unmarked locations pre-
determined by the Bureau of Land Management, Folio S-2, Seward
Meridian
There may be private inholdings within the boundaries of any
Federal and State Reservations shown on this map
Swamps, as portrayed, indicate only the wetter areas, usually of low
relief, as interpreted from aerial photographs

PROVISIONAL MAP
Produced from original
manuscript drawings. Infor-
mation shown as of date of
photography.



CONTOUR INTERVAL 5 METERS
SUPPLEMENTAL CONTOUR INTERVAL 2.5 METERS
CONTROL ELEVATIONS SHOWN TO THE NEAREST 0.1 METER
OTHER ELEVATIONS SHOWN TO THE NEAREST METER
To convert meters to feet multiply by 3.2808
To convert feet to meters multiply by .3048
THIS MAP COMPLIES WITH NATIONAL MAP ACCURACY STANDARDS
FOR SALE BY U.S. GEOLOGICAL SURVEY, FAIRBANKS, ALASKA 99701
DENVER, COLORADO 80225 OR RESTON, VIRGINIA 22092

QUADRANGLE LOCATION

1	2	3
4	5	6
7	8	

ADJOINING 7.5' QUADRANGLE NAMES

1 Talkeetna (A-1) SW and (A-1) SE
2 Talkeetna (A-1) SE
3 Talkeetna (A-1) SE
4 Tyonek (D-1) NW
5 Tyonek (D-1) NW
6 Tyonek (D-1) SW
7 Tyonek (D-1) SE
8 Anchorage (D-8) SW

ROAD LEGEND
Improved Road
Unimproved Road
Trail
State Route

TYONEK (D-1) NE, ALASKA
PROVISIONAL EDITION 1987
61150-H1-TM-025

