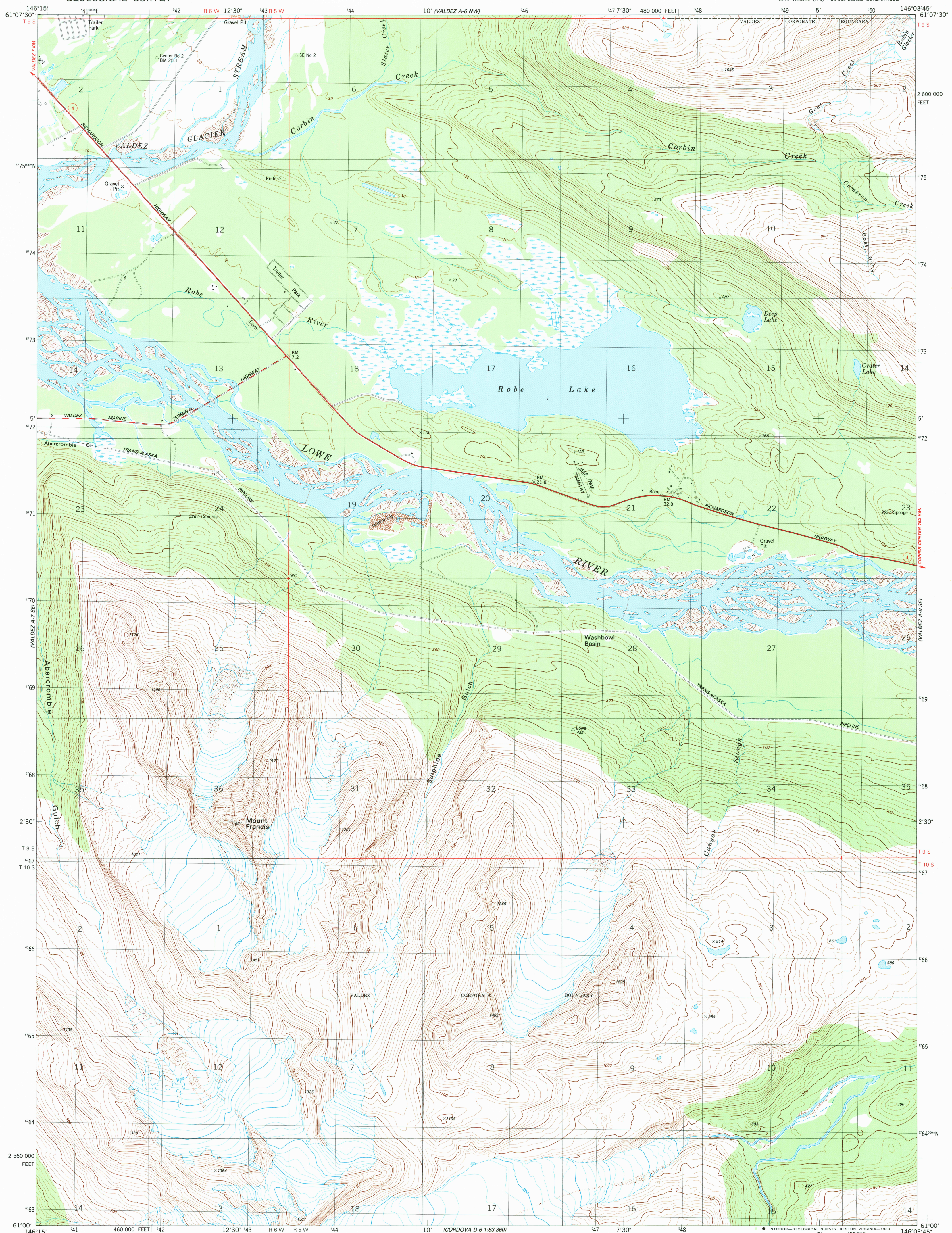
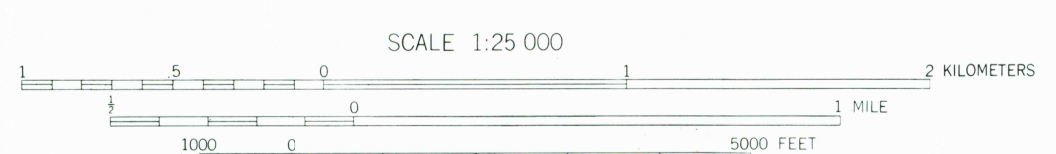
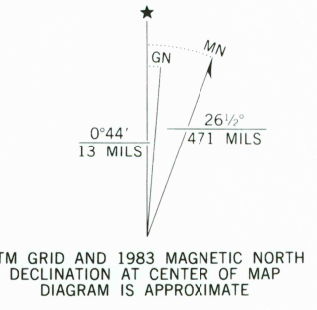


UNITED STATES  
DEPARTMENT OF THE INTERIOR  
GEOLOGICAL SURVEY

VALDEZ (A-6) SW QUADRANGLE  
ALASKA  
1:25 000-SCALE SERIES (TOPOGRAPHIC)



Mapped, edited, and published by the Geological Survey  
Control by USGS and NOS/NOAA  
Topography by photogrammetric methods from aerial photographs taken 1976. Field checked 1977. Map edited 1983  
Projection and 1000-meter grid  
Universal Transverse Mercator, zone 6  
10,000-foot grid ticks based on Alaska coordinate system, zone 3, 1927 North American Datum  
To place on the predicted North American Datum 1983 move the projection lines 61 meters north and 112 meters east as shown by dashed corner ticks  
Gray land lines represent unsurveyed and unmarked locations predetermined by the Bureau of Land Management  
Folio CR-5, Copper River Meridian



CONTOUR INTERVAL 20 METERS  
DOTTED LINES REPRESENT 10-METER CONTOUR  
NATIONAL GEODETIC VERTICAL DATUM OF 1929



ROAD CLASSIFICATION

Primary highway, hard surface	Light-duty road, hard or improved surface
Secondary highway, hard surface	Unimproved road
	State Route

VALDEZ (A-6) SW, ALASKA  
SW 1/4 VALDEZ (A-6) 1:25 000-SCALE QUADRANGLE  
N6100-W14603.75/7.5X11.25

THIS MAP COMPLIES WITH NATIONAL MAP ACCURACY STANDARDS  
FOR SALE BY U.S. GEOLOGICAL SURVEY  
FAIRBANKS, ALASKA 99701, DENVER, COLORADO 80225, OR RESTON, VIRGINIA 22092  
A FOLDER DESCRIBING TOPOGRAPHIC MAPS AND SYMBOLS IS AVAILABLE ON REQUEST

1983

CONTOURS AND ELEVATIONS IN METERS

Handwritten signature or initials.