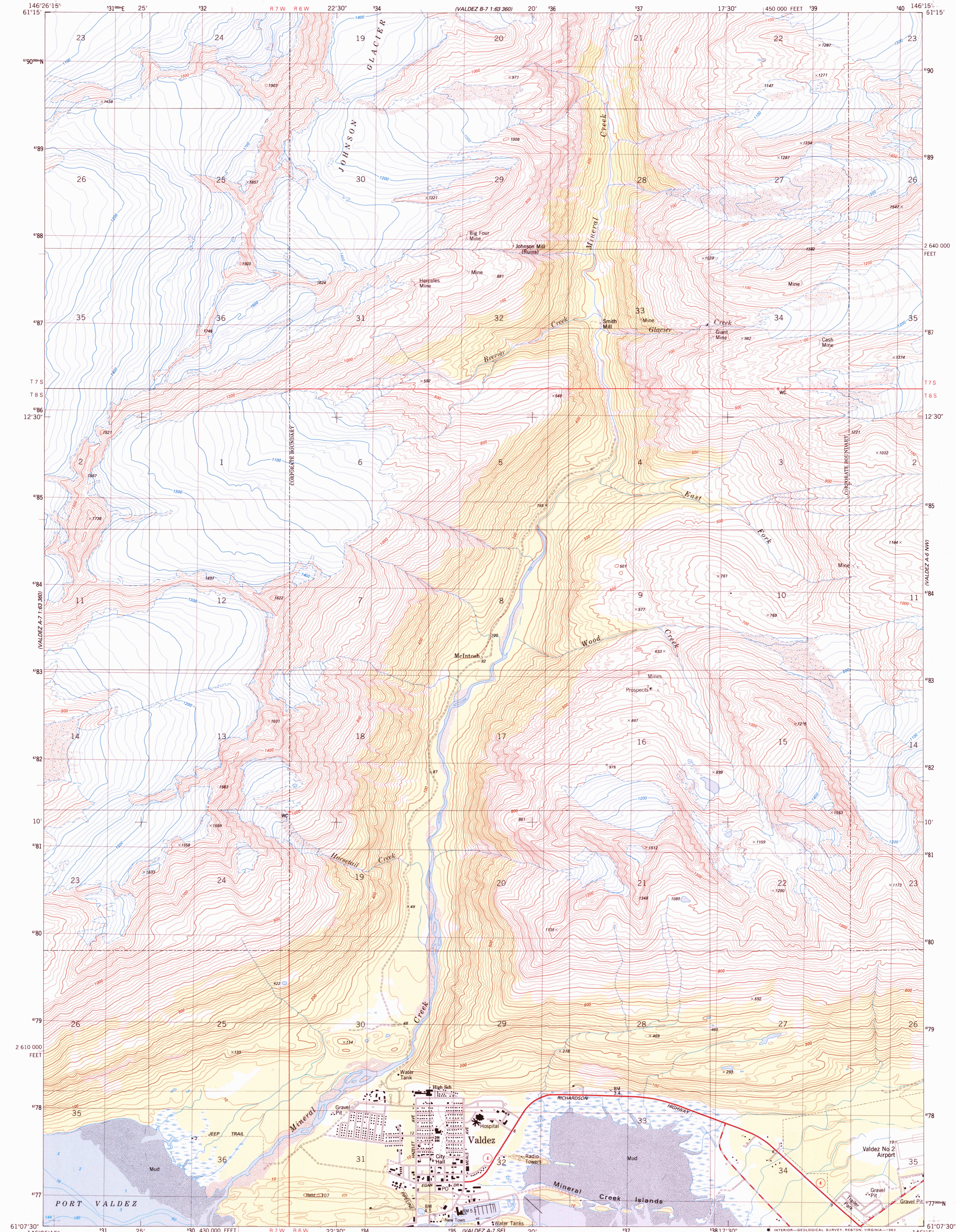


VALDEZ A-7  
1:63 360

UNITED STATES  
DEPARTMENT OF THE INTERIOR  
GEOLOGICAL SURVEY

VALDEZ (A-7) NE QUADRANGLE  
ALASKA  
1:25 000-SCALE SERIES (TOPOGRAPHIC)  
NE/4 VALDEZ (A-7) 1:63 360-SCALE QUADRANGLE

VALDEZ B-8  
1:63 360



VALDEZ A-7  
1:63 360

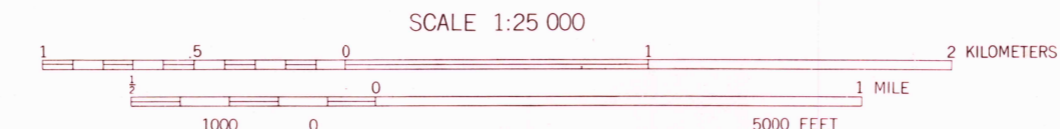
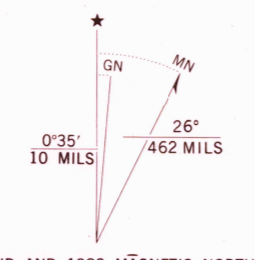
Mapped, edited, and published by the Geological Survey

Control by USGS and NOS/NOAA  
Topography by photogrammetric methods from aerial photographs taken 1976. Field checked 1977. Map edited 1983  
Selected hydrographic data compiled from NOS/NOAA chart 16707 (1982)  
This information is not intended for navigational purposes

Projection and 1000-meter grid  
Universal Transverse Mercator, zone 6  
10,000-foot grid ticks based on Alaska coordinate system, zone 3. 1927 North American Datum  
To place on the predicted North American Datum 1983 move the projection lines 61 meters north and 112 meters east as shown by dashed corner ticks

Gray land lines represent unsurveyed and unmarked locations predetermined by the Bureau of Land Management  
Folio CR-5, Copper River Meridian

There may be private inholdings within the boundaries of the National or State reservations shown on this map



CONTOUR INTERVAL 20 METERS  
DOTTED LINES REPRESENT 10-METER CONTOURS  
NATIONAL GEODETIC VERTICAL DATUM OF 1929  
DEPTH CURVES AND SOUNDINGS IN FEET-DATUM IS MEAN LOWER LOW WATER  
SHORELINE SHOWN REPRESENTS THE APPROXIMATE LINE OF MEAN HIGH WATER  
THE MEAN RANGE OF TIDE IS APPROXIMATELY 2.9 METERS



ROAD CLASSIFICATION  
Primary highway, hard surface  
Secondary highway, hard surface  
Light-duty road, hard or improved surface  
Unimproved road  
State Route

VALDEZ (A-7) NE, ALASKA  
NE/4 VALDEZ (A-7) 1:63 360-SCALE QUADRANGLE  
N6107.5-W14615.7-5X11.25

THIS MAP COMPLIES WITH NATIONAL MAP ACCURACY STANDARDS  
FOR SALE BY U.S. GEOLOGICAL SURVEY  
FAIRBANKS, ALASKA 99701, DENVER, COLORADO 80225, OR RESTON, VIRGINIA 22092  
A FOLDER DESCRIBING TOPOGRAPHIC MAPS SYMBOLS IS AVAILABLE ON REQUEST

CONTOURS AND ELEVATIONS IN METERS

1983

402184