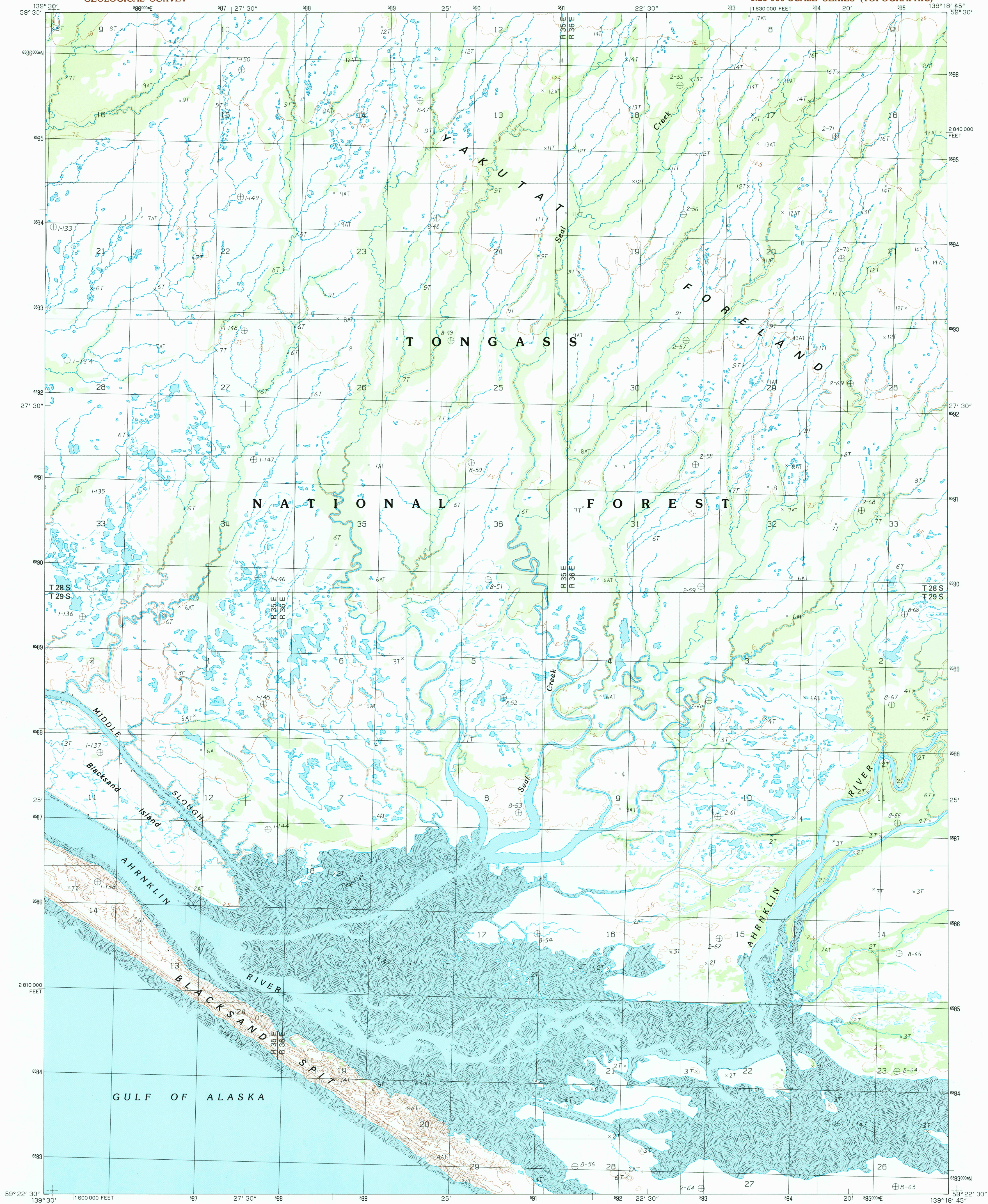


UNITED STATES  
DEPARTMENT OF THE INTERIOR  
GEOLOGICAL SURVEY

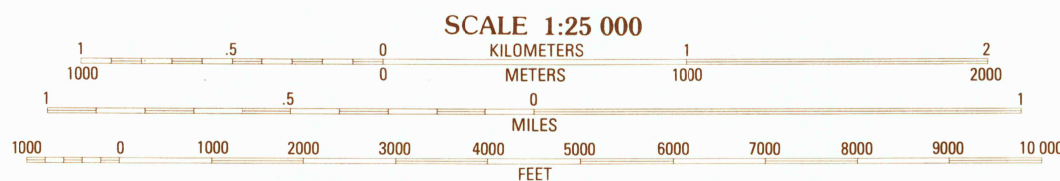
YAKUTAT (B-4) NW QUADRANGLE  
ALASKA  
1:25 000-SCALE SERIES (TOPOGRAPHIC)



PRODUCED BY THE UNITED STATES GEOLOGICAL SURVEY  
CONTROL BY: USGS, NOS/NOAA  
COMPILED FROM AERIAL PHOTOGRAPHS TAKEN: 1974 AND 1986  
FIELD CHECKED: 1986, MAP EDITED: 1987  
PROJECTION: UNIVERSAL TRANSVERSE MERCATOR  
GRID: 1000-METER UNIVERSAL TRANSVERSE MERCATOR  
GRID: 1000-FOOT STATE GRID TICKS ALASKA, ZONE 1  
UTM GRID DECLINATION: 1°22' EAST  
1987 MAGNETIC NORTH DECLINATION: 27°30' EAST  
VERTICAL DATUM: NATIONAL GEODETIC VERTICAL DATUM OF 1929  
HORIZONTAL DATUM: 1927 NORTH AMERICAN DATUM  
To place on the predicted North American Datum of 1983,  
move the projection lines as shown by dashed corner ticks  
(37 meters north and 99 meters east)  
Land lines represent unsurveyed and unmarked locations prede-  
termined by the Bureau of Land Management, Folio CR-8,  
Copper River Meridian  
There may be private inholdings within the boundaries of any  
Federal and State Reservations shown on this map  
Federal Reservation boundaries established by the Alaska National  
Interest Lands Conservation Act, PL 96-487, Dec. 2, 1980, are shown  
as compiled by the administering agencies  
Swamps, as portrayed, indicate only the wetter areas, usually of low  
relief, as interpreted from aerial photographs  
No distinction made between houses, barns, or other buildings

PROVISIONAL MAP  
Produced from original  
manuscript drawings. Infor-  
mation shown as of date of  
photography.

The Tongass National Forest consists of all land  
area above mean high water



SCALE 1:25 000  
SUPPLEMENTARY CONTOUR INTERVAL 2.5 METERS  
SHORELINE SHOWN REPRESENTS THE APPROXIMATE LINE OF MEAN HIGH WATER  
THE MEAN RANGE OF TIDE IS APPROXIMATELY 2.4 METERS  
CONTOUR ELEVATIONS SHOWN TO THE NEAREST 0.1 METER  
OTHER ELEVATIONS SHOWN TO THE NEAREST METER  
To convert meters to feet multiply by 3.2808  
To convert feet to meters multiply by 0.3048  
THIS MAP COMPLIES WITH NATIONAL MAP ACCURACY STANDARDS  
FOR SALE BY U.S. GEOLOGICAL SURVEY, FAIRBANKS, ALASKA 99701  
DENVER, COLORADO 80225 OR RESTON, VIRGINIA 22092

1	2	3
4	5	6
7	8	9

QUADRANGLE LOCATION

1 Yakutat (C-5) SE  
2 Yakutat (C-4) SW  
3 Yakutat (C-4) SE  
4 Yakutat (B-5) NE  
5 Yakutat (B-4) NE  
6 Yakutat (B-4) SE  
7 Yakutat (B-4) SW  
8 Yakutat (B-4) SE

ADJOINING 7.5' QUADRANGLE NAMES

CONTOURS AND ELEVATIONS IN METERS  
ROAD LEGEND  
No roads or trails in this area

YAKUTAT (B-4) NW, ALASKA  
PROVISIONAL EDITION 1987

59139-D3-TM-025

