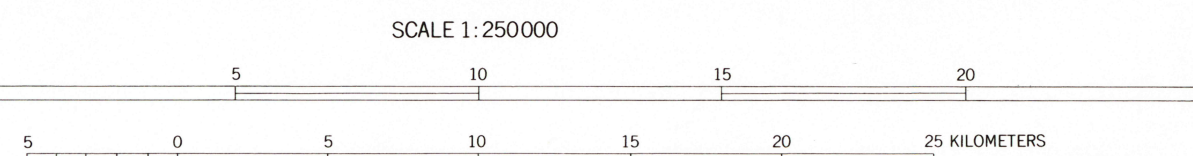
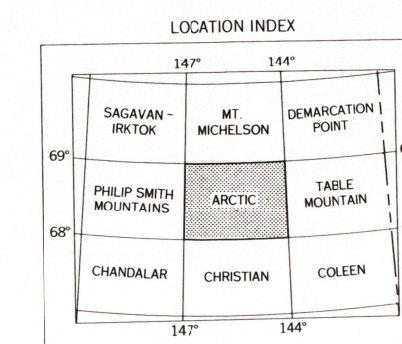


MAPPED, EDITED, AND PUBLISHED BY THE GEOLOGICAL SURVEY
CONTROL BY USGS
TOPOGRAPHY BY PHOTOGRAMMETRIC METHODS FROM AERIAL PHOTOGRAPHS
TAKEN 1955. FIELD ANNOTATED 1956. REVISED IN PART FROM AERIAL PHOTOGRAPHS
TAKEN 1978. MAP NOT FIELD CHECKED
PROJECTION AND 10,000-METER GRID Ticks SHOWN IN BLUE:
UNIVERSAL TRANSVERSE MERCATOR, ZONE 6
100,000-FOOT GRID Ticks BASED ON ALASKA COORDINATE SYSTEM, ZONE 3
1927 NORTH AMERICAN DATUM. TO PLACE ON THE PREDICTED NORTH
AMERICAN DATUM 1983 MOVE THE PROJECTION LINES 35 METERS NORTH
AND 114 METERS EAST
LAND LINES REPRESENT UNSURVEYED AND UNMARKED LOCATIONS
PREDETERMINED BY THE BUREAU OF LAND MANAGEMENT
FOLIOS U-12 AND U-13, UMIAT MERIDIAN
SWAMPS, AS PORTRAYED, INDICATE ONLY THE WETTER AREAS,
USUALLY OF LOW RELIEF, AS INTERPRETED FROM AERIAL PHOTOGRAPHS

FEDERAL RESERVATION BOUNDARIES ESTABLISHED BY THE ALASKA NATIONAL
INTEREST LANDS CONSERVATION ACT, PL. 96-487, SEC. 2, 1980 ARE SHOWN AS
COMPILED BY THE ADMINISTERING AGENCIES
THERE MAY BE PRIVATE INHOLDINGS WITHIN THE BOUNDARIES OF
THE NATIONAL OR STATE RESERVATIONS SHOWN ON THIS MAP



CONTOUR INTERVAL 200 FEET
NATIONAL GEODETIC VERTICAL DATUM OF 1929
1987 MAGNETIC DECLINATION AT SOUTH EDGE OF SHEET VARIES FROM 30°00' TO 32°00' EAST
FOR SALE BY U. S. GEOLOGICAL SURVEY
FAIRBANKS, ALASKA 99701, DENVER, COLORADO 80225, OR RESTON, VIRGINIA 22092
A FOLDER DESCRIBING TOPOGRAPHIC MAPS AND SYMBOLS IS AVAILABLE ON REQUEST



ROAD CLASSIFICATION
UNIMPROVED DIRT

ARCTIC, ALASKA
68144 A1-TF-250
1956
LIMITED REVISIONS 1983

RETURN TO:
USGS HISTORICAL MAP ARCHIVES