

MAPPED, EDITED, AND PUBLISHED BY THE GEOLOGICAL SURVEY

CONTROL BY USGS

TOPOGRAPHY BY PHOTOGRAMMETRIC METHODS FROM AERIAL PHOTOGRAPHS
TAKEN 1955. FIELD ANNOTATED 1956. REVISED IN PART FROM AERIAL PHOTOGRAPHS
TAKEN 1978. MAP NOT FIELD CHECKED

PROJECTION AND 10,000-METER GRID Ticks SHOWN IN BLUE:
UNIVERSAL TRANSVERSE MERCATOR, ZONE 6
100,000-FOOT GRID Ticks BASED ON ALASKA COORDINATE SYSTEM, ZONE 3
1927 NORTH AMERICAN DATUM. TO PLACE ON THE PREDICTED NORTH
AMERICAN DATUM 1983 MOVE THE PROJECTION LINES 35 METERS NORTH
AND 114 METERS EAST

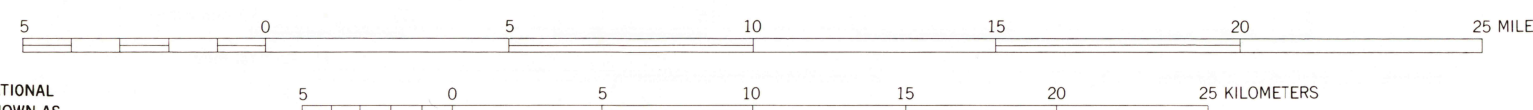
LAND LINES REPRESENT UNSURVEYED AND UNMARKED LOCATIONS
PREDETERMINED BY THE BUREAU OF LAND MANAGEMENT
FOLIOS U-12 AND U-13, UMIAT MERIDIAN

SWAMPS, AS PORTRAYED, INDICATE ONLY THE WETTER AREAS,
USUALLY OF LOW RELIEF, AS INTERPRETED FROM AERIAL PHOTOGRAPHS

THERE MAY BE PRIVATE INHOLDINGS WITHIN THE BOUNDARIES OF
THE NATIONAL OR STATE RESERVATIONS SHOWN ON THIS MAP

FEDERAL RESERVATION BOUNDARIES ESTABLISHED BY THE ALASKA NATIONAL
INTEREST LANDS CONSERVATION ACT, PL 96-487, DEC 2, 1980 ARE SHOWN AS
COMPILED BY THE ADMINISTERING AGENCIES

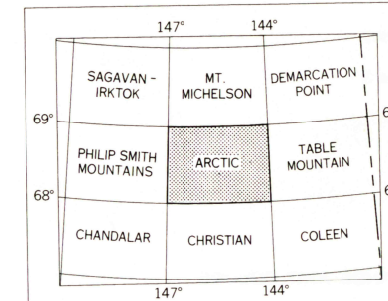
SCALE 1:250,000



CONTOUR INTERVAL 200 FEET
NATIONAL GEODETIC VERTICAL DATUM OF 1929

1956 MAGNETIC DECLINATION AT SOUTH EDGE OF SHEET VARIES FROM 31°30' TO 33°30' EAST
AN EARLIER SHADED RELIEF EDITION OF THIS MAP MAY BE AVAILABLE
FOR SALE BY U.S. GEOLOGICAL SURVEY
FAIRBANKS, ALASKA 99701, DENVER, COLORADO 80225, OR RESTON, VIRGINIA 22092
A FOLDER DESCRIBING TOPOGRAPHIC MAPS AND SYMBOLS IS AVAILABLE ON REQUEST

LOCATION INDEX



ROAD CLASSIFICATION

UNIMPROVED DIRT

ARCTIC, ALASKA
N6800-W14400/60X180

1956
LIMITED REVISIONS 1983

RETURN TO:
USGS AND HISTORICAL MAP ARCHIVE