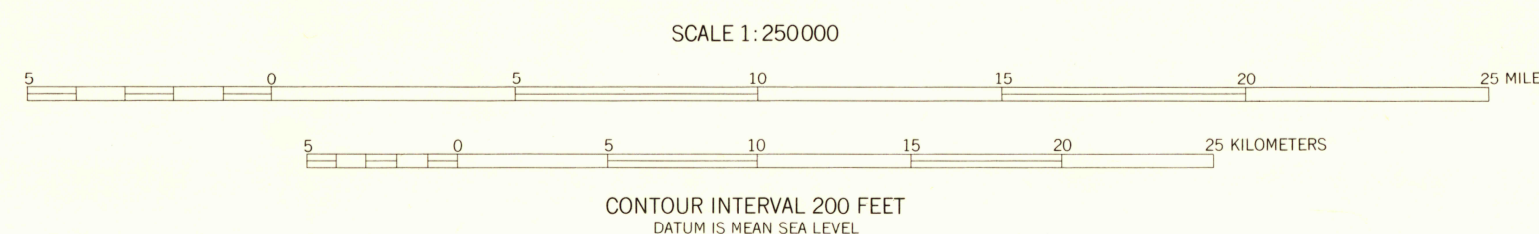
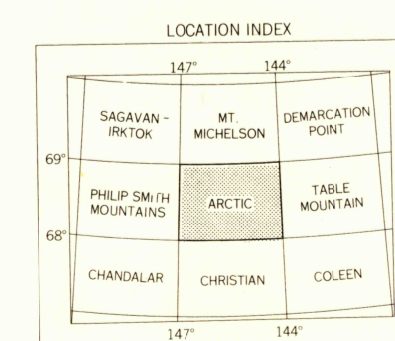


MAPPED, EDITED, AND PUBLISHED BY THE GEOLOGICAL SURVEY  
CONTROL BY USGS  
TOPOGRAPHY FROM AERIAL PHOTOGRAPHS BY PHOTOGRAMMETRIC METHODS 1957. AERIAL PHOTOGRAPHS TAKEN 1955. FIELD ANNOTATED 1956. MAP NOT FIELD CHECKED  
UNIVERSAL TRANSVERSE MERCATOR PROJECTION  
1927 NORTH AMERICAN DATUM  
10,000-METER UNIVERSAL TRANSVERSE MERCATOR GRID TICKS.  
ZONE 6, SHOWN IN BLUE  
UNCHECKED ELEVATIONS ARE SHOWN IN BROWN



1959 MAGNETIC DECLINATION AT SOUTH EDGE OF SHEET VARIES FROM 31°30' TO 33°30' EAST  
THIS MAP IS AVAILABLE IN BOTH SHADED RELIEF AND CONTOUR EDITIONS  
FOR SALE BY U.S. GEOLOGICAL SURVEY  
FAIRBANKS, ALASKA DENVER 2, COLORADO WASHINGTON 25, D.C.  
A FOLDER DESCRIBING TOPOGRAPHIC MAPS AND SYMBOLS IS AVAILABLE ON REQUEST



ROAD CLASSIFICATION  
TRAILS.....

ARCTIC, ALASKA  
W6800-WJ4400/60X180  
1956

USGS  
FILE COPY  
TOPOGRAPHIC DIVISION

HISTORICAL!

USCS  
Historical Files  
Topographic Division

Map 1959

2435