

MAPPED, EDITED, AND PUBLISHED BY THE GEOLOGICAL SURVEY

CONTROL BY USGS, USCGS AND USCE

COMPILED IN 1966 FROM U. S. GEOLOGICAL SURVEY 1:63,360 SCALE MAPS,
SURVEYED 1953-1954, AND FROM ARMY MAP SERVICE 1:50,000 SCALE MAPS,
SURVEYED 1954. MAP NOT FIELD CHECKED.

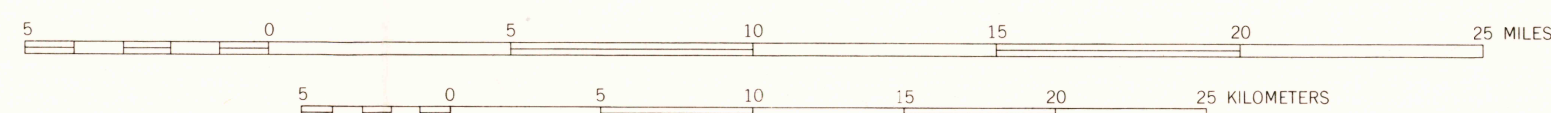
SELECTED HYDROGRAPHIC DATA COMPILED FROM USCGS CHART 9302 (1966)
THIS INFORMATION IS NOT INTENDED FOR NAVIGATIONAL PURPOSES

UNIVERSAL TRANSVERSE MERCATOR PROJECTION; 1927 NORTH AMERICAN DATUM
100,000-FOOT GRIDS BASED ON ALASKA COORDINATE SYSTEM, ZONES 7 AND 8
10,000-METER UNIVERSAL TRANSVERSE MERCATOR GRID TICS,
ZONE 3, SHOWN IN BLUE

GRAY LAND LINES REPRESENT UNSURVEYED AND UNMARKED LOCATIONS
PREDETERMINED BY THE BUREAU OF LAND MANAGEMENT
FOLIOS S-8, S-9 AND S-20, SEWARD MERIDIAN

SWAMPS, AS PORTRAYED, INDICATE ONLY THE WETTER AREAS,
USUALLY OF LOW RELIEF, AS INTERPRETED FROM AERIAL PHOTOGRAPHS

SCALE 1:250,000

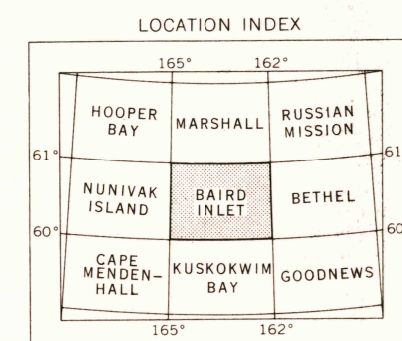


CONTOUR INTERVAL 100 FEET
DOTTED LINES REPRESENT 50-FOOT CONTOURS

NATIONAL GEODETIC VERTICAL DATUM OF 1929
DEPTH CURVES IN FEET—DATUM IS MEAN LOWER LOW WATER

SHORELINE SHOWN REPRESENTS THE APPROXIMATE LINE OF MEAN HIGH WATER
1954 MAGNETIC DECLINATION AT SOUTH EDGE OF SHEET VARIES FROM 17°00' TO 18°30' EAST
THIS MAP IS AVAILABLE IN BOTH SHADED RELIEF AND CONTOUR EDITIONS

FOR SALE BY U. S. GEOLOGICAL SURVEY, DENVER, COLORADO 80225, OR RESTON, VIRGINIA 22092
A FOLDER DESCRIBING TOPOGRAPHIC MAPS AND SYMBOLS IS AVAILABLE ON REQUEST



ROAD CLASSIFICATION

TRAILS USGS
Historical File
Topographic Division

BAIRD INLET, ALASKA
N6000—W16200/60 X 180

1954
MINOR REVISIONS 1977
MAR 15 1973

3750