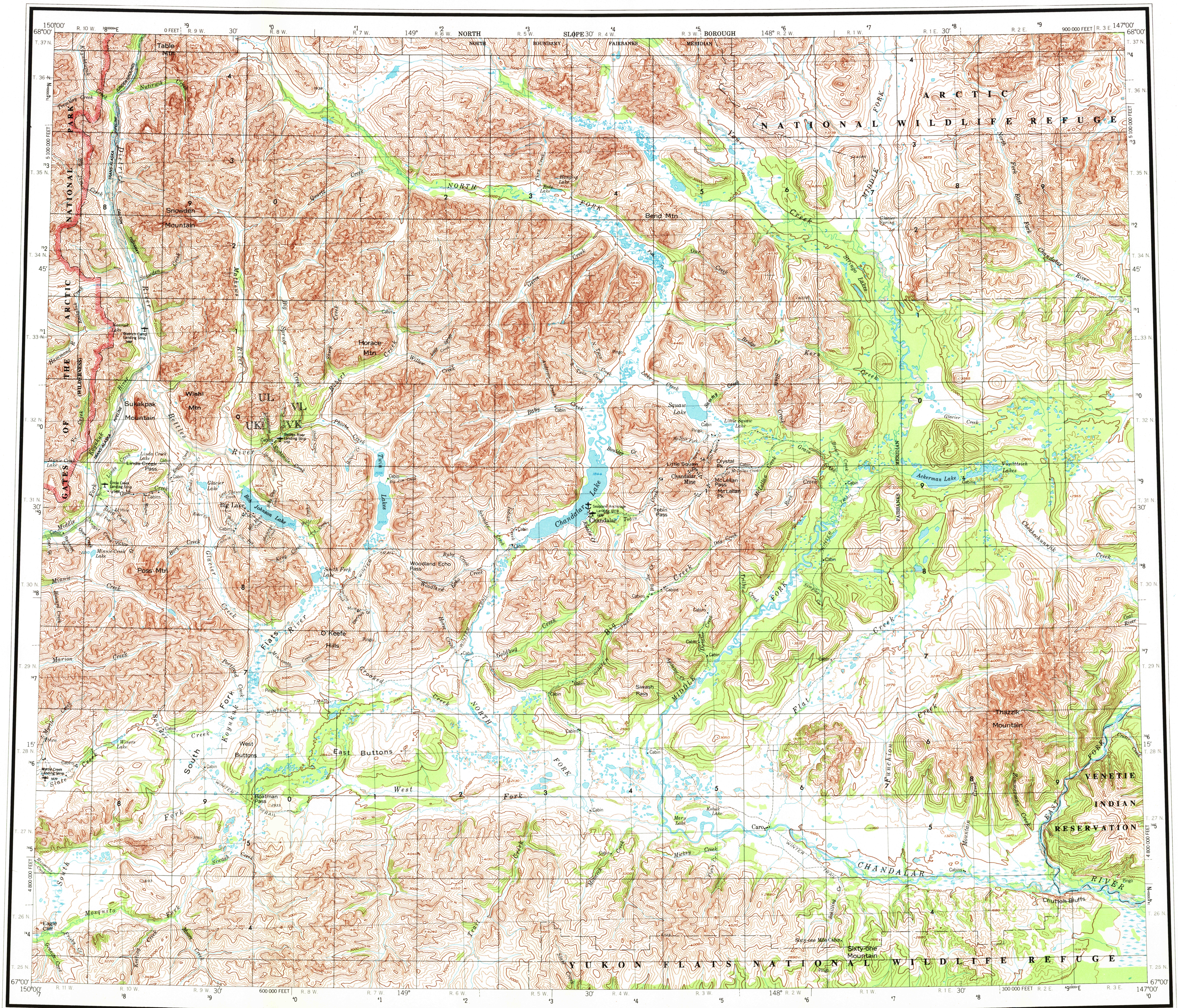
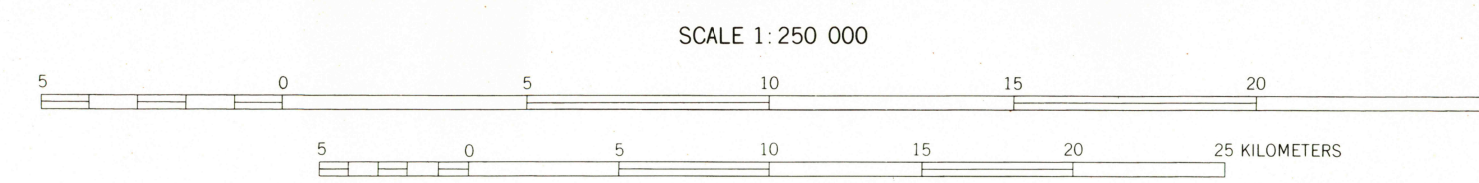


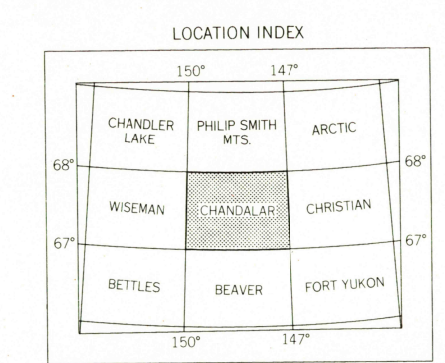
686101 NHTC



MAPPED, EDITED, AND PUBLISHED BY THE GEOLOGICAL SURVEY
CONTROL BY USGS
TOPOGRAPHY BY PHOTOGRAMMETRIC METHODS FROM AERIAL PHOTOGRAPHS
TAKEN 1955. FIELD ANNOTATED 1956. REVISED IN 1976 FROM
AERIAL PHOTOGRAPHS TAKEN 1975. MAP NOT FIELD CHECKED
UNIVERSAL TRANSVERSE MERCATOR PROJECTION
100,000-FOOT GRID TICKS BASED ON ALASKA COORDINATE SYSTEM, ZONES 3 AND 4
1927 NORTH AMERICAN DATUM. TO PLACE ON THE PREDICTED NORTH
AMERICAN DATUM 1983 MOVE THE PROJECTION LINES 45 METERS NORTH
AND 117 METERS EAST
LAND LINES REPRESENT UNSURVEYED AND UNMARKED LOCATIONS
PREDETERMINED BY THE BUREAU OF LAND MANAGEMENT
FOLIOS F-2 AND F-3, FAIRBANKS MERIDIAN
SWAMPS, AS PORTRAYED, INDICATE ONLY THE WETTER AREAS,
USUALLY OF LOW RELIEF, AS INTERPRETED FROM AERIAL PHOTOGRAPHS
THERE MAY BE PRIVATE INHOLDINGS WITHIN THE BOUNDARIES OF
THE NATIONAL OR STATE RESERVATIONS SHOWN ON THIS MAP



CONTOUR INTERVAL 200 FEET
NATIONAL GEODETIC VERTICAL DATUM OF 1929
BLACK NUMBERED LINES INDICATE THE 10,000 METER UNIVERSAL TRANSVERSE MERCATOR GRID, ZONE 6
1975 MAGNETIC DECLINATION FROM TRUE NORTH VARIES FROM 20° 00' WEST TO 20° 00' EAST AT THE CENTER OF THE EAST EDGE
THIS MAP IS AVAILABLE IN BOTH SHADED RELIEF AND CONTOUR EDITIONS
FOR SALE BY U.S. GEOLOGICAL SURVEY
FAIRBANKS, ALASKA 99701, DENVER, COLORADO 80225, OR RESTON, VIRGINIA 22092
A FOLDER DESCRIBING TOPOGRAPHIC MAPS AND SYMBOLS IS AVAILABLE ON REQUEST



ROAD CLASSIFICATION
LIGHT DUTY
CHANDALAR, ALASKA
N6700-W14700/60X180
1956
LIMITED REVISIONS 1982

FEDERAL RESERVATION BOUNDARIES ESTABLISHED BY THE ALASKA NATIONAL
INTEREST LANDS CONSERVATION ACT, PL 96-487, DEC 2, 1980 ARE SHOWN AS
COMPILED BY THE ADMINISTERING AGENCIES ON THE ALASKA BOUNDARIES MAP SET

RETURN TO:
AND HISTORICAL MAP ARCHIVES
USGS NATIONAL CENTER, MS-522
RESTON, VA 22092