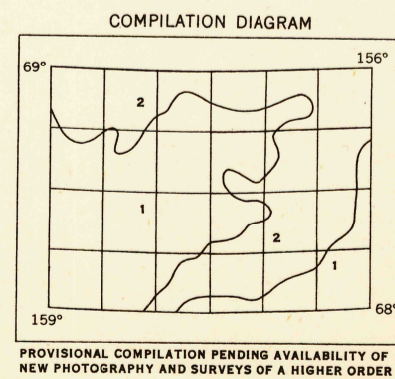


MAPPED, EDITED, AND PUBLISHED BY THE GEOLOGICAL SURVEY IN COOPERATION WITH THE DEPARTMENT OF THE NAVY, NAVAL PETROLEUM RESERVE

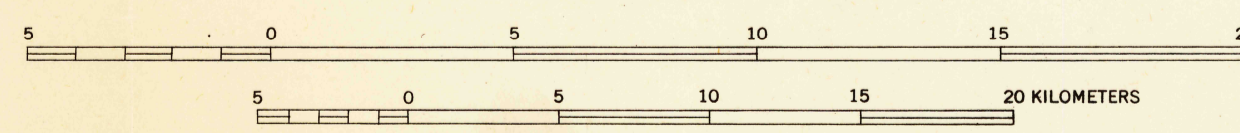
CONTROL BY US&GS AND USAF

CULTURE AND DRAINAGE IN PART COMPILED FROM TRIMETROGON PHOTOGRAPHY 1943-1946. TOPOGRAPHY COMPILED FROM ORIGINAL SURVEYS OF THE GEOLOGICAL SURVEY AND OTHER OFFICIAL SOURCES, SUPPLEMENTED BY STEREOPHOTOGAMMETRIC (PHOTOLODADE) COMPILED, 1944

UNIVERSAL TRANSVERSE MERCATOR PROJECTION, ZONE 4
ASTRONOMICAL DATUM



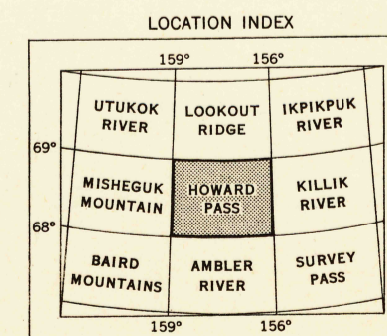
SCALE 1:250 000



CONTOUR INTERVALS 200 AND 1000 FEET
AREAS NOT SURVEYED IN DETAIL INDICATED BY BROKEN LINES
DATUM IS MEAN SEA LEVEL

1951 MAGNETIC DECLINATION AT SOUTH EDGE OF SHEET VARIES FROM 23°00' TO 24°00' EAST

FOR SALE BY U. S. GEOLOGICAL SURVEY, FEDERAL CENTER, DENVER, COLORADO OR WASHINGTON 25, D. C.
A FOLDER DESCRIBING TOPOGRAPHIC MAPS AND SYMBOLS IS AVAILABLE ON REQUEST



ROAD CLASSIFICATION

ALL WEATHER ROADS	DRY WEATHER ROADS
HARD SURFACE.....NONE	IMPROVED DIRT.....NONE
OTHER.....NONE	UNIMPROVED DIRT.....NONE
TRAILS.....NONE	

HOWARD PASS, ALASKA
N6800-W15600/60X180