

MAPPED BY THE GEOLOGICAL SURVEY AND  
INTERNATIONAL BOUNDARY COMMISSION  
EDITED AND PUBLISHED BY THE GEOLOGICAL SURVEY

CONTROL BY USGS, USC&GS, AND IBC  
COASTAL DATA IN PART BY USC&GS

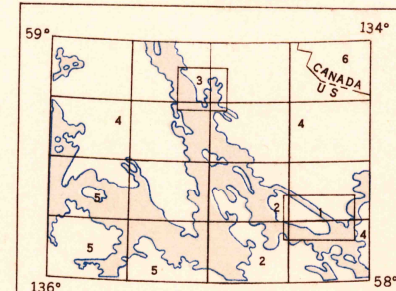
CULTURE AND DRAINAGE IN PART COMPILED FROM TRIMETROGON  
PHOTOGRAPHY, 1941-1942. TOPOGRAPHY COMPILED FROM ORIGINAL  
SURVEYS OF THE GEOLOGICAL SURVEY AND OTHER OFFICIAL  
SOURCES, 1906-1948, SUPPLEMENTED BY STEREOPHOTO  
GRAMMETRIC (PHOTOALUIDE AND MULTIPLEX) COMPILED,  
1943-1949

UNIVERSAL TRANSVERSE MERCATOR PROJECTION, ZONE 8

RED TINT INDICATES AREA IN WHICH ONLY LANDMARK  
BUILDING ARE SHOWN

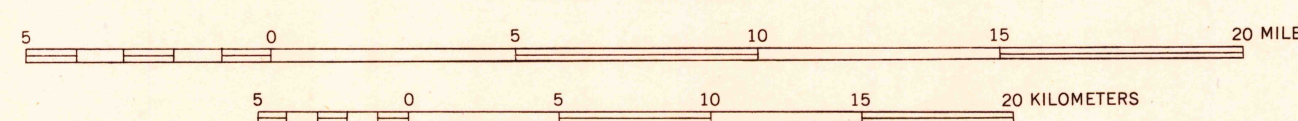
DASHED LAND LINES INDICATE APPROXIMATE LOCATION

COMPILED DIAGRAM



1. TOPOGRAPHY FROM JUNEAU SPECIAL, B-1, B-2
2. TOPOGRAPHY FROM ALASKA MAP TO TRANS-  
FERRED AND ADJUSTED TO TRIMETROGON BASE
3. TOPOGRAPHY FROM ALASKA MAP 11 TRANS-  
FERRED AND ADJUSTED TO TRIMETROGON BASE
4. TOPOGRAPHY FROM INTERNATIONAL BOUNDARY  
COMMISSION MAPS 7, 8 AND 10 TRANSFERRED  
AND ADJUSTED TO TRIMETROGON BASE
5. CULTURE AND DRAINAGE FROM ALASKA  
MAP 8 NO TOPOGRAPHY AVAILABLE
6. TOPOGRAPHY BY PHOTOALUIDE METHODS 1948

SCALE 1:250 000



CONTOUR INTERVAL 200 FEET

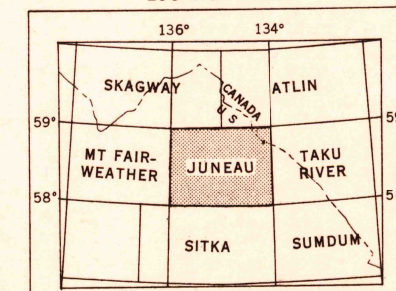
DATUM IS MEAN SEA LEVEL

DEPTH CURVES IN FEET-DATUM IS MEAN LOWER LOW WATER

SHORELINE SHOWN REPRESENTS THE APPROXIMATE LINE OF MEAN HIGH WATER

1950 MAGNETIC DECLINATION AT SOUTH EDGE OF SHEET VARIES FROM 29°30' TO 30°30' EAST  
THIS MAP IS AVAILABLE IN BOTH SHADED RELIEF AND CONTOUR EDITIONS  
FOR SALE BY U. S. GEOLOGICAL SURVEY, FEDERAL CENTER, DENVER, COLORADO OR WASHINGTON 25, D. C.  
A FOLDER DESCRIBING TOPOGRAPHIC MAPS AND SYMBOLS IS AVAILABLE ON REQUEST

LOCATION INDEX



ROAD CLASSIFICATION

- |                   |                   |
|-------------------|-------------------|
| ALL WEATHER ROADS | DRY WEATHER ROADS |
| HARD SURFACE      | IMPROVED DIRT     |
| OTHER             | UNIMPROVED DIRT   |
| TRAILS            |                   |

JUNEAU, ALASKA-CANADA  
N 5800-W 13400/60x120

USGS  
Historical File  
Topographic Division

EDITION OF 1951

5-11-51  
2125