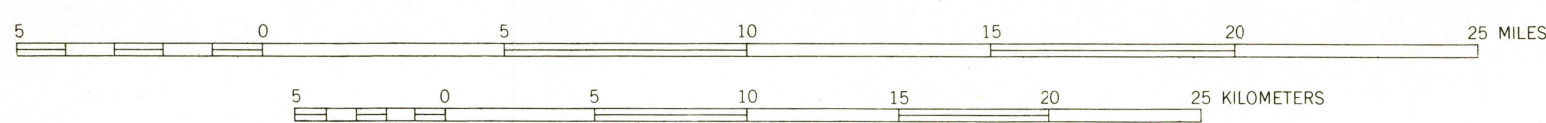


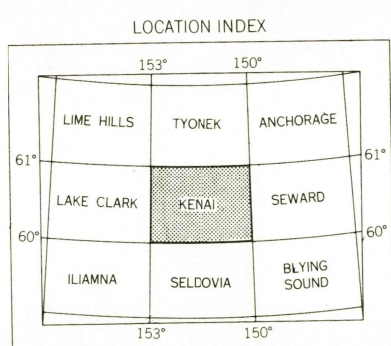
MAPPED, EDITED, AND PUBLISHED BY THE GEOLOGICAL SURVEY
CONTROL BY USGS, USCGS, AND USCE
COMPILED IN 1964 FROM U.S. GEOLOGICAL SURVEY 1:63,360 SERIES MAPS,
SURVEYED 1951, 1952 AND 1956. MAP NOT FIELD CHECKED.
SELECTED HYDROGRAPHIC DATA COMPILED FROM USGS & USCGS
CHARTS 8553 AND 8554 (1963). THIS INFORMATION IS NOT INTENDED
FOR NAVIGATIONAL PURPOSES.
UNIVERSAL TRANSVERSE MERCATOR PROJECTION. 1927 NORTH AMERICAN DATUM
100,000-FOOT GRID BASED ON ALASKA COORDINATE SYSTEM, ZONES 4 AND 5
10,000-METER UNIVERSAL TRANSVERSE MERCATOR GRID TICKS,
ZONE 5, SHOWN IN BLUE.
GRAY LAND LINES REPRESENT UNSURVEYED AND UNMARKED LOCATIONS
PREDETERMINED BY THE BUREAU OF LAND MANAGEMENT
FOLIOS S-12, S-13, S-16, AND S-17, SEWARD MERIDIAN
SWAMPS, AS PORTRAYED, INDICATE ONLY THE WETTER AREAS,
USUALLY OF LOW RELIEF, AS INTERPRETED FROM AERIAL PHOTOGRAPHS

SCALE 1:250,000



CONTOUR INTERVAL 200 FEET
DOTTED LINES REPRESENT 100-FOOT CONTOURS
DATUM IS MEAN SEA LEVEL

DEPTH CURVES AND SOUNDINGS IN FEET—DATUM IS MEAN LOWER LOW WATER
SHORELINE SHOWN REPRESENTS THE APPROXIMATE LINE OF MEAN HIGH WATER
1958 MAGNETIC DECLINATION AT SOUTH EDGE OF SHEET VARIES FROM 2°30' TO 2°00' EAST
THIS MAP IS AVAILABLE IN BOTH SHADED RELIEF AND CONTOUR EDITIONS
FOR SALE BY U.S. GEOLOGICAL SURVEY
FAIRBANKS, ALASKA, 99701, DENVER, COLORADO, 80225, OR WASHINGTON, D.C. 20242
A FOLDER DESCRIBING TOPOGRAPHIC MAPS AND SYMBOLS IS AVAILABLE ON REQUEST



U.S.G.S.
TOPOGRAPHIC DIVISION
AUG 1 1967
3110

ROAD CLASSIFICATION
MEDIUM DUTY LIGHT DUTY
UNIMPROVED DIRT
STATE ROUTE
USGS
Historical
Topographic

KENAI, ALASKA
N6000-W15000/60X180

1958 3110