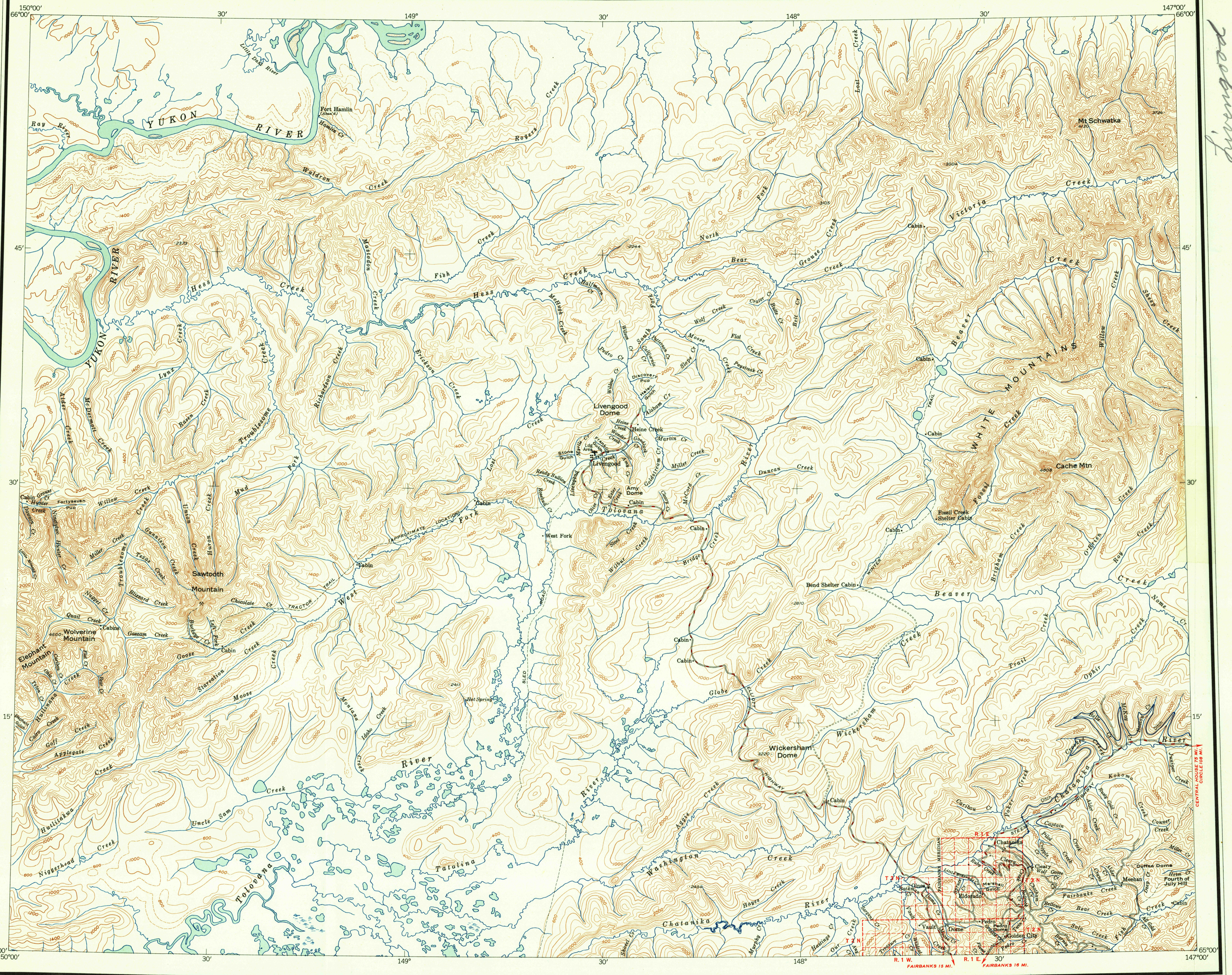
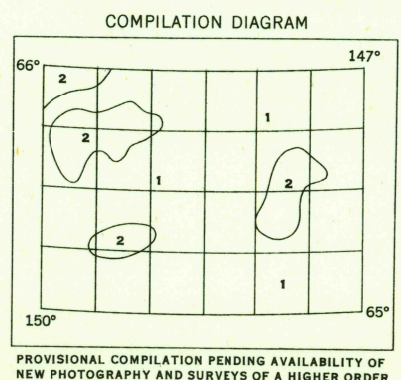


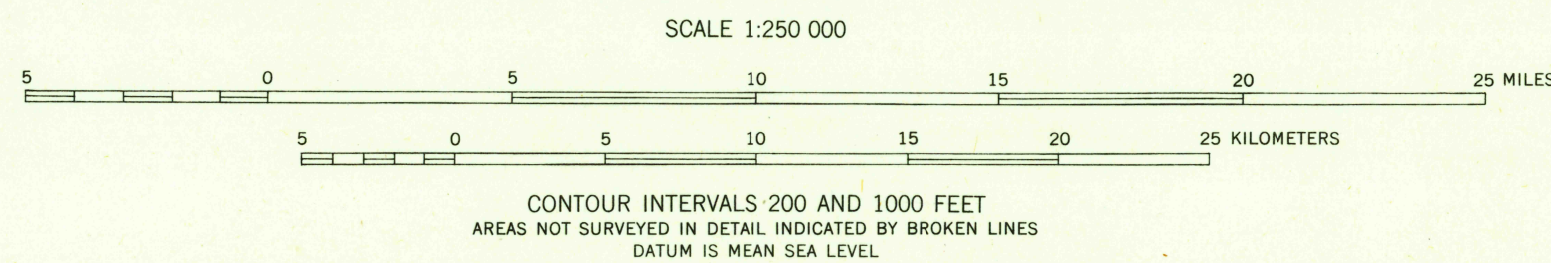
Livengood



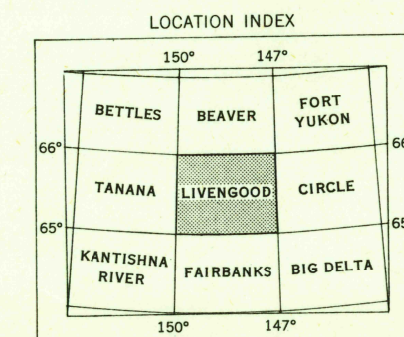
MAPPED, EDITED, AND PUBLISHED BY THE GEOLOGICAL SURVEY
CONTROL BY USCGS AND USAF
CULTURE AND DRAINAGE IN PART COMPILED FROM TRIMETROGON
TOPOGRAPHY 1944-1945. TOPOGRAPHY COMPILED FROM ORIGINAL
SURVEYS OF THE GEOLOGICAL SURVEY 1909-1940. SUPPLEMENTED
BY STEREOPHOTOGRAMMETRIC (PHOTOALTIMETER) COMPILED, 1944-1945
UNIVERSAL TRANSVERSE MERCATOR PROJECTION, ZONE 6
27 NORTH AMERICAN DATUM
DASHED LINES INDICATE APPROXIMATE LOCATION



1. TOPOGRAPHY FROM USGS
MAPS YANKEE FORM
TO FAIRBANKS AND THE
TANANAN RIVER
1:250,000, ADJUSTED TO
TRIMETROGON BASE
2. TOPOGRAPHY FROM PHOTO-
ALTIMETER COMPILED
ADJUSTED TO
TRIMETROGON BASE



1951 MAGNETIC DECLINATION AT SOUTH EDGE OF SHEET VARIES FROM 28°30' TO 30°30' EAST
THIS MAP IS AVAILABLE IN BOTH SHADED RELIEF AND CONTOUR EDITIONS
FOR SALE BY U. S. GEOLOGICAL SURVEY, FEDERAL CENTER, DENVER, COLORADO OR WASHINGTON 25, D. C.
A FOLDER DESCRIBING TOPOGRAPHIC MAPS AND SYMBOLS IS AVAILABLE ON REQUEST



ROAD CLASSIFICATION
ALL WEATHER ROADS DRY WEATHER ROADS
HARD-SURFACE NONE IMPROVED DIRT
OTHER UNIMPROVED DIRT
7-01-1952
1070
LIVENGOOD, ALASKA
N6500-W14700/60X180