

MAPPED, EDITED, AND PUBLISHED BY THE GEOLOGICAL SURVEY

CONTROL BY USGS AND NOS/NOAA

COMPILED IN 1960 FROM U.S. GEOLOGICAL SURVEY 1:63,360-SCALE MAPS,  
SURVEYED IN 1952. REVISED IN 1984 BY THE U.S. GEOLOGICAL SURVEY FROM  
AERIAL PHOTOGRAPHS TAKEN 1978-1979. MAP NOT FIELD CHECKED

PROJECTION AND 10,000-METER GRID  
UNIVERSAL TRANSVERSE MERCATOR, ZONE 6  
100,000-FOOT GRID TICS BASED ON ALASKA COORDINATE SYSTEM, ZONES 3 AND 4  
1927 NORTH AMERICAN DATUM. TO PLACE ON THE PREDICTED NORTH  
AMERICAN DATUM 1983 MOVE THE PROJECTION LINES 50 METERS NORTH  
AND 117 METERS EAST

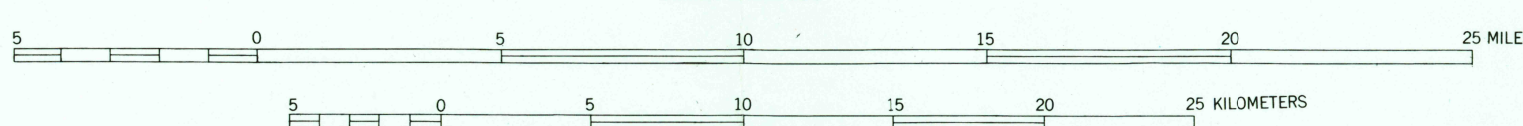
GRAY LAND LINES REPRESENT UNSURVEYED AND UNMARKED LOCATIONS  
PREDETERMINED BY THE BUREAU OF LAND MANAGEMENT  
FOLIOS F-6 AND F-7, FAIRBANKS MERIDIAN

SWAMPS, AS PORTRAYED, INDICATE ONLY THE WETTER AREAS,  
USUALLY OF LOW RELIEF, AS INTERPRETED FROM AERIAL PHOTOGRAPHS

FEDERAL RESERVATION BOUNDARIES ESTABLISHED BY THE ALASKA NATIONAL  
INTEREST LANDS CONSERVATION ACT, PL. 96-487, DEC. 2, 1980 ARE SHOWN AS  
COMPILED BY THE ADMINISTERING AGENCIES

THERE MAY BE PRIVATE INHOLDINGS WITHIN THE BOUNDARIES OF  
THE NATIONAL OR STATE RESERVATIONS SHOWN ON THIS MAP

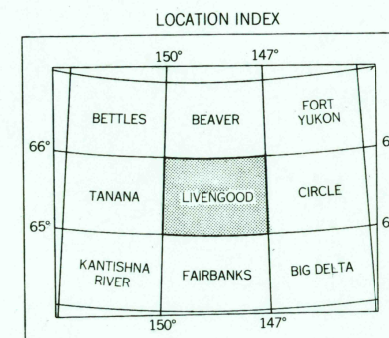
SCALE 1:250,000



CONTOUR INTERVAL 200 FEET  
DOTTED LINES REPRESENT 100-FOOT CONTOURS  
NATIONAL GEODETIC VERTICAL DATUM OF 1929

1984 MAGNETIC DECLINATION AT SOUTH EDGE VARIES FROM 27° TO 28°30' EAST

FOR SALE BY U.S. GEOLOGICAL SURVEY  
FAIRBANKS, ALASKA 99701, DENVER, COLORADO 80225, OR RESTON, VIRGINIA 22092  
A FOLDER DESCRIBING TOPOGRAPHIC MAPS AND SYMBOLS IS AVAILABLE ON REQUEST



ROAD CLASSIFICATION

MEDIUM DUTY . . . . . LIGHT DUTY . . . . .  
UNIMPROVED DIRT = = = = =  
STATE ROUTE

LIVENGOOD, ALASKA  
65147-A1-TF-250

1956  
LIMITED REVISION 1984