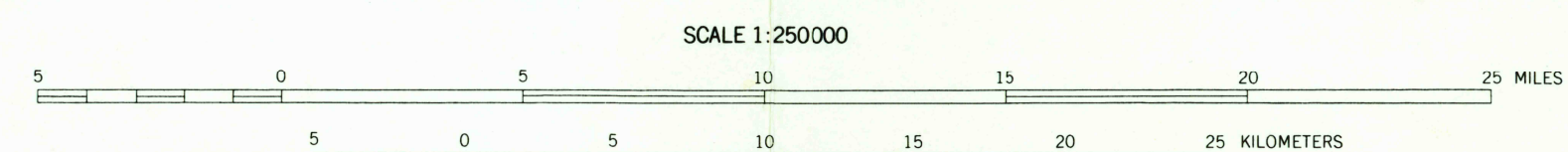
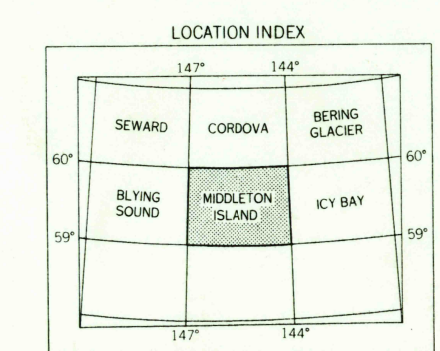


MAPPED, EDITED, AND PUBLISHED BY THE GEOLOGICAL SURVEY
CONTROL BY USGS AND USC&GS
COMPILED IN 1964 FROM U. S. GEOLOGICAL SURVEY 1:63,360 SERIES MAPS SURVEYED 1952 AND 1955. MAP NOT FIELD CHECKED.
SELECTED HYDROGRAPHIC DATA COMPILED FROM USCGS CHARTS 8502 (1956) AND 8513 (1963). THIS INFORMATION IS NOT INTENDED FOR NAVIGATIONAL PURPOSES.
UNIVERSAL TRANSVERSE MERCATOR PROJECTION, 1927 NORTH AMERICAN DATUM
100,000 FOOT GRID BASED ON ALASKA COORDINATE SYSTEM, ZONE 3
10,000 METER UNIVERSAL TRANSVERSE MERCATOR GRID TICS
ZONE 6 SHOWN IN BLUE
LAND LINES REPRESENT UNSURVEYED AND UNMARKED LOCATIONS
PREDETERMINED BY THE BUREAU OF LAND MANAGEMENT
FOLIOS CR 5, AND CR 10, COPPER RIVER MERIDIAN



CONTOUR INTERVAL 200 FEET
DOTTED LINES REPRESENT 100-FOOT CONTOURS
DATUM IS MEAN SEA LEVEL
DEPTH CURVES AND SOUNDINGS IN FEET—DATUM IS MEAN LOWER LOW WATER
SHORELINE SHOWN REPRESENTS THE APPROXIMATE LINE OF MEAN HIGH WATER
1955 MAGNETIC DECLINATION AT SOUTH EDGE OF SHEET VARIES FROM 26°30' TO 28°00' EAST
THIS MAP IS AVAILABLE IN BOTH SHADED RELIEF AND CONTOUR EDITIONS
FOR SALE BY U. S. GEOLOGICAL SURVEY
FAIRBANKS, ALASKA 99701, DENVER, COLORADO 80225 OR WASHINGTON, D. C. 20242
A FOLDER DESCRIBING TOPOGRAPHIC MAPS AND SYMBOLS IS AVAILABLE ON REQUEST



U.S.G.S.
FILE COPY
TOPOGRAPHIC DIVISION
MIDDLETON ISLAND, ALASKA
N5900 - W14400/500180
1955
USGS
Historical File
Topographic Division