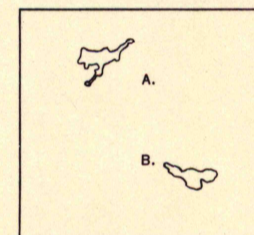
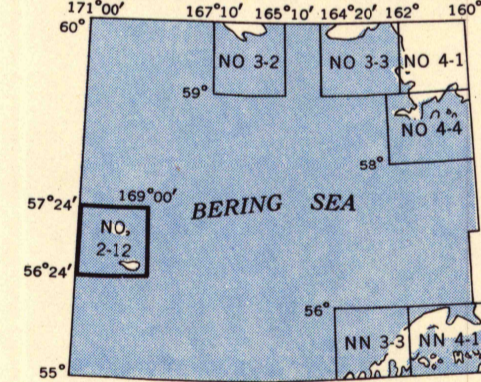


COVERAGE DIAGRAM



COMPILATION METHODS  
Photo-stereo Photo-planimetric Map  
A. Data from 1:75,000 Hydrographic Office Chart.  
B. Data from 1898 Treasury Department Charts.

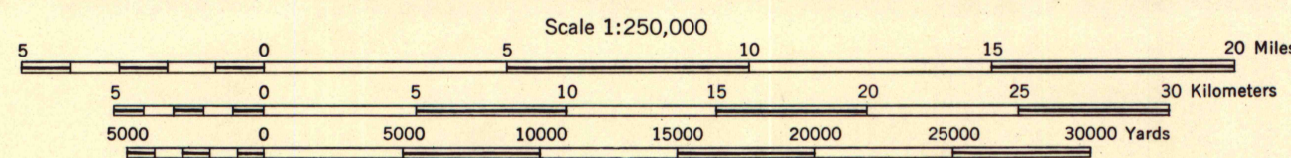
LOCATION DIAGRAM FOR NO 2-12



LEGEND

- Improved dirt road
- Unimproved dirt road
- Trail
- Checked spot elevation in feet
- Located object
- Rocks: Sunken; Awash
- Limit of danger line
- Reef
- Wrecks: Sunken; Exposed
- Foreshore flats

Q501  
Edition 1-AMS  
Prepared by the Army Map Service (AM), Corps of Engineers, U. S. Army, Washington, D. C.  
Copied in 1950 from Alaska, 1:250,000, USGS, Pribilof Islands, 1949. Original map compiled  
from 1:75,000 Hydrographic Office Chart and 1898 Treasury Department Charts by U. S. Geo-  
logical Survey, Horizontal and vertical control by USC&GS. Marginal data revised and grids add-  
ed, 1950.



CONTOUR INTERVAL 200 FEET  
DATUM IS APPROXIMATELY MEAN SEA LEVEL

TRANSVERSE MERCATOR PROJECTION  
HORIZONTAL DATUM IS BASED ON THE ST. PAUL-ST. GEORGE  
1944 DATUM. ST. GEORGE ISLAND ASTRONOMIC STATION.  
LATITUDE 56°41'31" N. LONGITUDE 169°36'00" W.

BLACK NUMBERED LINES INDICATE THE 10,000 METER UNIVERSAL TRANSVERSE MERCATOR GRID. ZONE 2

THE LAST FOUR DIGITS OF THE GRID NUMBERS ARE OMITTED

PRINTED BY ARMY MAP SERVICE, CORPS OF ENGINEERS, 6-58, 116347  
GW

GRID ZONE DESIGNATION	TO GIVE A STANDARD REFERENCE ON THIS SHEET TO NEAREST 1,000 METERS
2V	SAMPLE POINT: ST. GEORGE
100,000 M. SQUARE IDENTIFICATION	
NU PU	NT
NT PT	8
90 80	7 4

IGNORE THE SMALLER figures of any grid number; these are for finding the full coordinates. Use ONLY the LARGER figures of the grid number; number: 6300000  
If reporting beyond 97° E or 18° W, quote Grid Zone Designation, as: NT874

A. M. S. DEPOSITORY MAP  
MAP AND AIR PHOTO LIBRARY  
University of Wisconsin

PRIBILOF ISLANDS, ALASKA

4370  
S 250  
U 4  
NO 2-12