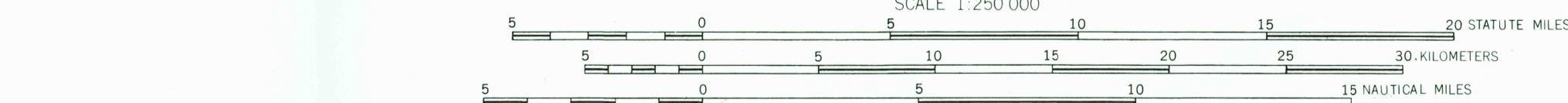


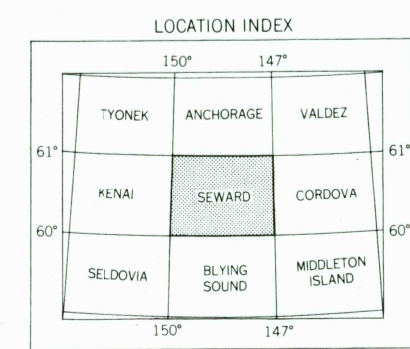


MAPPED, EDITED, AND PUBLISHED BY THE GEOLOGICAL SURVEY
CONTROL BY NOS/NOAA AND USGS
HYDROGRAPHY COMPILED FROM US&GS CHARTS 8502, 8515, 8523, 8551, 8552, AND 8553
COMPILED IN 1955 FROM U.S. GEOLOGICAL SURVEY 1:63,360 SERIES MAPS 1951, 1952, AND 1953
UNIVERSAL TRANSVERSE MERCATOR PROJECTION, 1927 NORTH AMERICAN DATUM
100,000 FOOT GRID BASED ON ALASKA COORDINATE SYSTEM, ZONES 4 AND 3
10,000 METER UNIVERSAL TRANSVERSE MERCATOR GRID TICKS, ZONE 4, SHOWN IN BLUE
GRAY LAND LINES REPRESENT UNSURVEYED AND UNMARKED LOCATIONS
PREDETERMINED BY THE BUREAU OF LAND MANAGEMENT
FOLIOS S-14, S-15, S-16, SEWARD MERIDIAN AND CR-5, COPPER RIVER MERIDIAN
SWAMPS, AS PORTRAYED, INDICATE ONLY THE WETTER AREAS,
USUALLY OF LOW RELIEF, AS INTERPRETED FROM AERIAL PHOTOGRAPHS
RED TINT INDICATES AREA IN WHICH ONLY LANDMARK BUILDINGS ARE SHOWN
THERE MAY BE PRIVATE INHOLDINGS WITHIN THE BOUNDARIES OF THE NATIONAL OR STATE RESERVATIONS SHOWN ON THIS MAP
LAKE ELEVATIONS ARE UNCHECKED

TO PLACE ON THE PREDICTED NORTH AMERICAN DATUM 1983 MOVE
THE PROJECTION LINES 64 METERS NORTH AND 1.18 METERS EAST
OFFSHORE PROJECTION SURVEY DATA, PRINTED IN RED, COMPILED BY
BLM OUTER CONTINENTAL SHELF OFFICIAL PROJECTION DIAGRAMS,
DATED OCTOBER 31, 1974 AND JULY 21, 1975. THE PROJECTIONS ON THIS MAP
ARE NOT FOR FEDERAL LEASING PURPOSES, FOR SUCH PURPOSES,
REFER TO THE 1:250,000 OCS OFFICIAL PROJECTION DIAGRAMS
AVAILABLE FROM THE BUREAU OF LAND MANAGEMENT



CONTOUR INTERVAL 200 FEET
NATIONAL GEODETIC VERTICAL DATUM OF 1929
DEPTH CURVES IN FEET—DATUM IS MEAN LOWER LOW WATER
SHOULDER SHOWN REPRESENTS THE APPROXIMATE LINE OF MEAN HIGH WATER
MAGNETIC DECLINATION AT SOUTH EDGE OF SHEET VARIES FROM 24°30' TO 26° EAST
THIS MAP IS AVAILABLE IN BOTH SHADED RELIEF AND CONTOUR EDITIONS
FOR SALE BY U.S. GEOLOGICAL SURVEY
FAIRBANKS, ALASKA 99701, DENVER, COLORADO 80226, OR RESTON, VIRGINIA 22092
A FOLDER DESCRIBING TOPOGRAPHIC MAPS AND SYMBOLS IS AVAILABLE ON REQUEST



ROAD CLASSIFICATION
MEDIUM DUTY ——— LIGHT DUTY
UNIMPROVED DIRT =-----
STATE ROUTE ○

USGS
HISTORICAL FILE
NATIONAL MAPPING DIVISION
SEWARD, ALASKA
N6000-W14700/60K180
1953
MINOR REVISIONS 1981

MAY 28 1981

9300