

MAPPED, EDITED, AND PUBLISHED BY THE GEOLOGICAL SURVEY

CONTROL BY USGS, NOS/NOAA, INTERNATIONAL BOUNDARY COMMISSION  
AND GEOLOGICAL SURVEY OF CANADA

COMPILED IN 1965 FROM U.S. GEOLOGICAL SURVEY 1:63,360 SCALE MAPS  
SURVEYED 1949-51, REVISED IN PART FROM AERIAL PHOTOGRAPHS  
TAKEN 1978-79, AND OTHER SOURCE DATA. PURPLE SCREENED PATTERN  
SHOWN ON GLACIAL FEATURES INDICATES GLACIAL ADVANCE OR RECESSON,  
VISIBLE AS OF THE DATE OF PHOTOGRAPHY. CANADIAN PORTION COPIED FROM  
SKAGWAY, 1957 AND TATSHENSHIN RIVER, 1960 QUADRANGLES (1:250,000,  
ARMY SURVEY ESTABLISHMENT, R.C.E. MAP NOT FIELD CHECKED)

SELECTED HYDROGRAPHIC DATA COMPILED FROM NOS/NOAA CHARTS  
THIS INFORMATION NOT INTENDED FOR NAVIGATIONAL PURPOSES

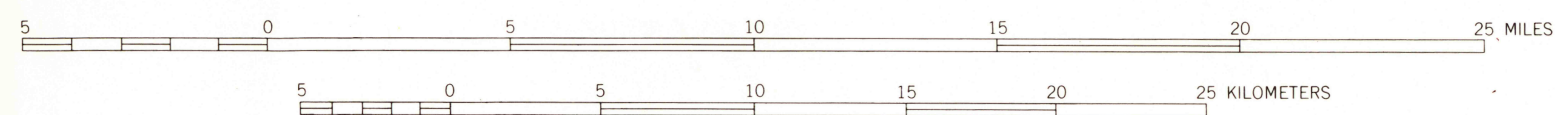
PROJECTIONS AND 10,000-METER GRID TICS SHOWN IN BLUE  
UNIVERSAL TRANSVERSE MERCATOR, ZONE 8  
100,000-FOOT GRID TICS BASED ON ALASKA COORDINATE SYSTEM, ZONE 1  
1927 NORTH AMERICAN DATUM. TO PLACE ON THE PREDICTED NORTH  
AMERICAN DATUM 1983 MOVE THE PROJECTION LINES 37 METERS NORTH  
AND 103 METERS EAST

SWAMPS, AS PORTRAYED, INDICATE ONLY THE WETTER AREAS.  
USUALLY OF LOW RELIEF, AS INTERPRETED FROM AERIAL PHOTOGRAPHS

GRAY LAND LINES REPRESENT UNSURVEYED AND UNMARKED LOCATIONS  
PREDETERMINED BY THE BUREAU OF LAND MANAGEMENT, FOLIO CR-8,  
THE STATE OF ALASKA, DIVISION OF LANDS, FOLIO CR-11, AND FROM  
COMPUTATIONS FOR THE COPPER RIVER MERIDIAN

THE ALASKA MARITIME NATIONAL WILDLIFE REFUGE CONSISTS OF  
ALL PUBLIC LAND IN THE COASTAL WATERS AND ADJACENT SEAS OF  
ALASKA CONSISTING OF LANDS, ISLETS, ROCKS, REEFS, AND SPIRES

SCALE 1:250,000



CONTOUR INTERVAL 200 FEET IN THE UNITED STATES AND 500 FEET IN CANADA

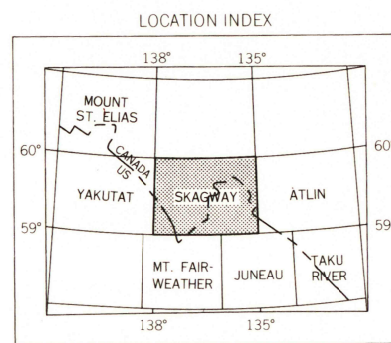
NATIONAL GEOLOGICAL VERTICAL DATUM OF 1929

DEPTH CURVES IN FEET - DATUM IS MEAN LOWER LOW WATER

SHORELINE SHOWN REPRESENTS THE APPROXIMATE LINE OF MEAN HIGH WATER

1961 MAGNETIC DECLINATION AT SOUTH EDGE OF SHEET VARIES FROM 29° TO 30° EAST

FOR SALE BY U.S. GEOLOGICAL SURVEY  
FAIRBANKS, ALASKA 99701, DENVER, COLORADO 80225, OR RESTON, VIRGINIA 22092  
A FOLDER DESCRIBING TOPOGRAPHIC MAPS AND SYMBOLS IS AVAILABLE ON REQUEST



ROAD CLASSIFICATION

MEDIUM DUTY . . . . . LIGHT DUTY . . . . .

UNIMPROVED DIRT . . . . .

STATE ROUTE . . . . .

SKAGWAY, ALASKA-CANADA

N6900-W13500/60X180

1961

LIMITED REVISIONS 1982

DEC 07 1982

6500