

Sumdum

MAPPED BY THE GEOLOGICAL SURVEY, U. S. COAST AND GEODETIC SURVEY, U. S. FOREST SERVICE, INTERNATIONAL BOUNDARY COMMISSION, AND DEPARTMENT OF MINES AND TECHNICAL SURVEYS OF CANADA
EDITED AND PUBLISHED BY THE GEOLOGICAL SURVEY

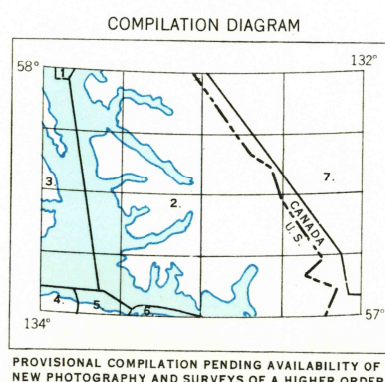
CONTROL BY USGS, USC&GS, AND IBC
HYDROGRAPHY COMPILED FROM USC&GS CHARTS 8201 (1:217,828 SCALE), 8202 (1:209,978 SCALE), 8210, 8218, 8224, AND 8227

COMPILED IN 1952 FROM ORIGINAL SURVEYS BY IBC 1907-1909, USFS 1923, USGS 1940, USC&GS 1950, AND DEPARTMENT OF MINES AND TECHNICAL SURVEYS OF CANADA 1951.
SUPPLEMENTED BY KELSCH PLOTTER COMPILED 1950

UNIVERSAL TRANSVERSE MERCATOR PROJECTION, ZONE 8
1927 NORTH AMERICAN DATUM

DASHED LAND LINES INDICATE APPROXIMATE LOCATIONS

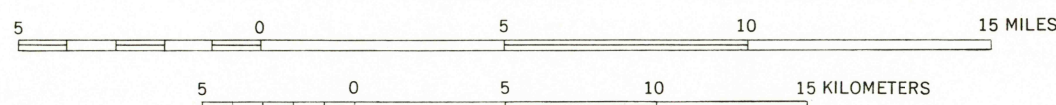
10,000-meter grid ticks shown in blue
Dashed land lines indicate approximate locations



1. TOPOGRAPHY FROM AERIAL PHOTOGRAPHS BY KELSCH PLOTTER, HYDROGRAPHY AND COASTLINE FROM USCGS CHARTS 8202 AND 8227
2. TOPOGRAPHY FROM IBC MAP 8, COASTLINE AND HYDROGRAPHY FROM USCGS CHARTS 8201 AND 8202
3. TOPOGRAPHY FROM USGS MAP 10, COASTLINE AND HYDROGRAPHY FROM USCGS CHARTS 8201, 8202, 8218, AND 8224
4. TOPOGRAPHY FROM TONGASS NATIONAL FOREST SURVEY KERRI STRAIT, COASTLINE AND HYDROGRAPHY FROM USCGS CHART 8201
5. TOPOGRAPHY FROM WAC 138 ADJUSTED TO USGS MAY 7, COASTLINE AND HYDROGRAPHY FROM USCGS CHARTS 8201 AND 8210
6. TOPOGRAPHY AND HYDROGRAPHY FROM USCGS CHARTS 8201 AND 8210 ADJUSTED TO USGS MAY 7
7. TOPOGRAPHY FROM DEPARTMENT OF MINES AND TECHNICAL SURVEYS OF CANADA, SHEET 104F

PROVISIONAL COMPILED PENDING AVAILABILITY OF NEW PHOTOGRAPHY AND SURVEYS OF A HIGHER ORDER

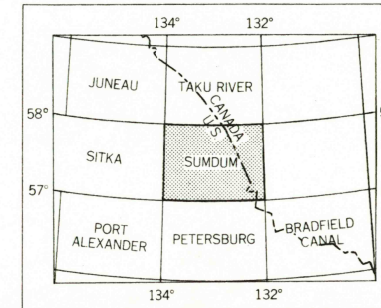
SCALE 1:250 000



CONTOUR INTERVALS 200, 250, AND 1000 FEET
AREAS NOT SURVEYED IN DETAIL INDICATED BY BROKEN LINES
DATUM IS MEAN SEA LEVEL

DEPTH CURVES IN FEET—DATUM IS MEAN LOWER LOW WATER
SHORELINE SHOWN REPRESENTS THE APPROXIMATE LINE OF MEAN HIGH WATER
1952 MAGNETIC DECLINATION AT SOUTH EDGE OF SHEET VARIES FROM 30° TO 30° 30' EAST
THIS MAP IS AVAILABLE IN BOTH SHADED RELIEF AND CONTOUR EDITIONS
FOR SALE BY U. S. GEOLOGICAL SURVEY, DENVER 25, COLORADO OR WASHINGTON 25, D. C.
A FOLDER DESCRIBING TOPOGRAPHIC MAPS AND SYMBOLS IS AVAILABLE ON REQUEST

LOCATION INDEX



ROAD CLASSIFICATION

ALL WEATHER ROADS DRY WEATHER ROADS
HARD-SURFACE.....NONE IMPROVED DIRT.....NONE
OTHER.....NONE UNIMPROVED DIRT.....NONE
TRAILS.....

*USGS
Historical File
Topo Six*

9-14-1962
1140
SUMDUM, ALASKA-CANADA

N5700-W13200/60K120

1952