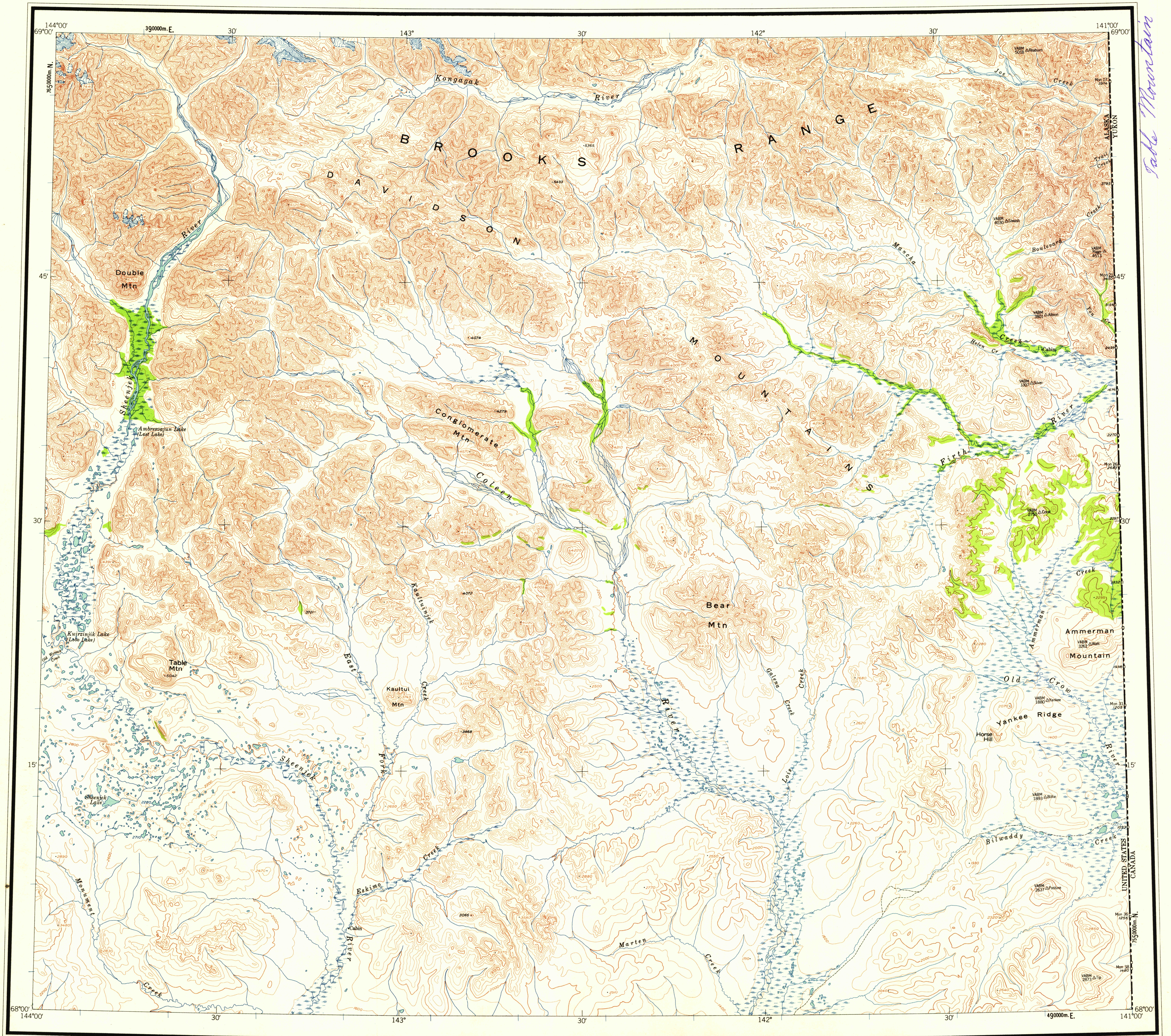


TABLE MOUNTAIN



MAPPED, EDITED, AND PUBLISHED BY THE GEOLOGICAL SURVEY

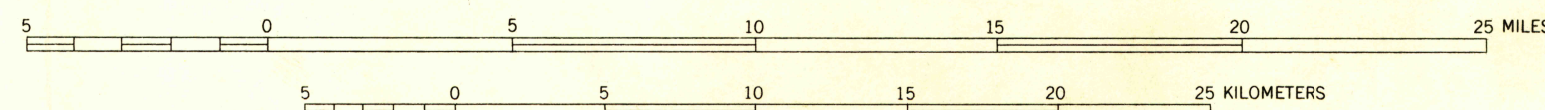
CONTROL BY USGS, USC&GS, AND INTERNATIONAL BOUNDARY COMMISSION

TOPOGRAPHY FROM AERIAL PHOTOGRAPHS BY ER-55 PLOTTER 1957  
AERIAL PHOTOGRAPHS TAKEN 1955, FIELD ANNOTATED 1956  
MAP NOT FIELD CHECKED

UNIVERSAL TRANSVERSE MERCATOR PROJECTION  
1927 NORTH AMERICAN DATUM  
10,000-METER UNIVERSAL TRANSVERSE MERCATOR GRID TICS,  
ZONE 7, SHOWN IN BLUE

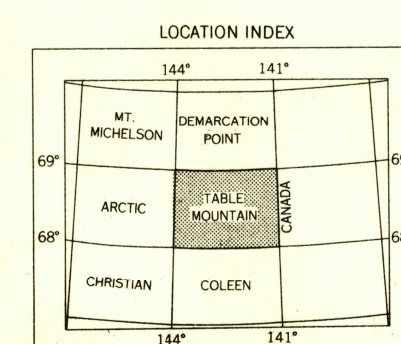
UNCHECKED ELEVATIONS ARE SHOWN IN BROWN AND BLUE

SCALE 1:250,000



CONTOUR INTERVAL 200 FEET  
DATUM IS MEAN SEA LEVEL

1957 MAGNETIC DECLINATION AT SOUTH EDGE OF SHEET VARIES FROM 33°30' TO 35°30' EAST  
THIS MAP IS AVAILABLE IN BOTH SHADED RELIEF AND CONTOUR EDITIONS  
FOR SALE BY U.S. GEOLOGICAL SURVEY  
FAIRBANKS, ALASKA DENVER 2, COLORADO WASHINGTON 25, D.C.  
A FOLDER DESCRIBING TOPOGRAPHIC MAPS AND SYMBOLS IS AVAILABLE ON REQUEST



ROAD CLASSIFICATION

TRAILS

TABLE MOUNTAIN, ALASKA  
N6800-W14100/60X180

1956

USGS  
Historical File  
Topographic Division

Table Mountain