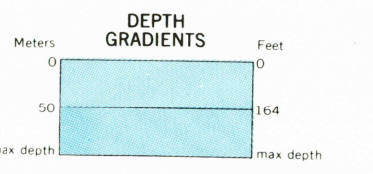


NATIONAL OCEAN SERVICE HYDROGRAPHIC SURVEY INFORMATION			
SURVEY NUMBER	SURVEY DATE	SURVEY SCALE	SURVEY LINE SPACING (NAUT. MILES)
H-3199	1910	1:100,000	05-80
H-3203	1910	1:80,000	05-80
H-3431	1912	1:30,000	05-80
H-3441	1914	1:10,000	01-05
H-3442	1914	1:10,000	02-06
H-3444	1914	1:20,000	05-11
H-3445	1914	1:20,000	02-11
H-3446	1914	1:20,000	02-11
H-3447	1914	1:20,000	02-11
H-3448	1914	1:20,000	02-11
H-3449	1914	1:20,000	02-11
H-3450	1914	1:20,000	02-11
H-3451	1914	1:20,000	02-11
H-3452	1914	1:20,000	02-11
H-3453	1914	1:20,000	02-11
H-3454	1914	1:20,000	02-11
H-3455	1914	1:20,000	02-11
H-3456	1914	1:20,000	02-11
H-3457	1914	1:20,000	02-11
H-3458	1914	1:20,000	02-11
H-3459	1914	1:20,000	02-11
H-3460	1914	1:20,000	02-11
H-3461	1914	1:20,000	02-11
H-3462	1914	1:20,000	02-11
H-3463	1914	1:20,000	02-11
H-3464	1914	1:20,000	02-11
H-3465	1914	1:20,000	02-11
H-3466	1914	1:20,000	02-11
H-3467	1914	1:20,000	02-11
H-3468	1914	1:20,000	02-11
H-3469	1914	1:20,000	02-11
H-3470	1914	1:20,000	02-11
FE-227	1980	1:20,000	02-11

BATHYMETRY COMPILED IN 1983 BY NATIONAL OCEAN SERVICE. BATHYMETRY WAS COMPILED FROM NOS HYDROGRAPHIC SURVEYS (SEE INDEX). BATHYMETRY SURVEY DATA COMPLY WITH INTERNATIONAL HYDROGRAPHIC ORGANIZATION SPECIAL PUBLICATION 44 ACCURACY STANDARDS AND/OR STANDARDS USED AS OF THE DATE OF THE SURVEY. THIS INFORMATION IS NOT INTENDED FOR NAVIGATIONAL PURPOSES.



CONVERSION TABLE			
Meters	Feet	Feet	Meters
1	3.2808	1	3.048
2	6.5617	2	6.096
3	9.8425	3	9.144
4	13.1234	4	12.192
5	16.4042	5	15.240
6	19.6850	6	18.288
7	22.9659	7	21.336
8	26.2467	8	24.384
9	29.5276	9	27.432
10	32.8084	10	30.480
To convert meters to feet multiply by 3.2808		To convert feet to meters multiply by 0.3048	

MAPPED, EDITED, AND PUBLISHED BY THE GEOLOGICAL SURVEY  
CONTROL BY USGS, NOS/NOAA, AND USACE

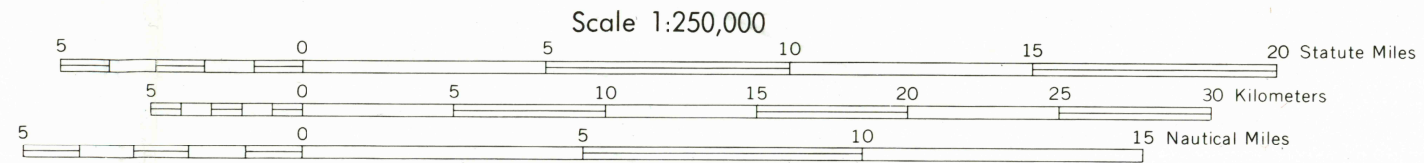
COMPILED IN 1962 FROM U.S. GEOLOGICAL SURVEY 1:63,360-SCALE MAPS,  
SURVEYED 1952, 1954, AND 1958. REVISED IN PART FROM  
AERIAL PHOTOGRAPHS TAKEN 1978, 1979, 1980 AND 1982. MAP NOT FIELD CHECKED  
PROJECTION AND 10,000-METER GRID  
UNIVERSAL TRANSVERSE MERCATOR, ZONE 5  
100,000-FOOT GRID TICS BASED ON ALASKA COORDINATE SYSTEM, ZONES 4 AND 5  
1927 NORTH AMERICAN DATUM. TO PLACE ON THE PREDICTED NORTH  
AMERICAN DATUM 1983 MOVE THE PROJECTION LINES 67 METERS NORTH  
AND 121 METERS EAST

GRAY LAND LINES REPRESENT UNSURVEYED AND UNMARKED LOCATIONS  
PREDETERMINED BY THE BUREAU OF LAND MANAGEMENT  
FOLIOS 5-2, 5-3, 5-12 AND 5-13, SEWARD MERIDIAN  
SWAMPS, AS PORTRAYED, INDICATE ONLY THE WETTER AREAS,  
USUALLY OF LOW RELIEF, AS INTERPRETED FROM AERIAL PHOTOGRAPHS

FEDERAL RESERVATION BOUNDARIES ESTABLISHED BY THE ALASKA NATIONAL  
INTEREST LANDS CONSERVATION ACT, PL 96-487, DEC. 2, 1980 ARE SHOWN AS  
COMPILED BY THE ADMINISTERING AGENCIES

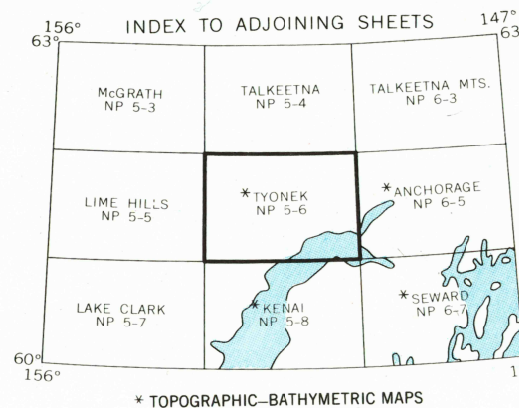
THE ALASKA MARITIME NATIONAL WILDLIFE REFUGE CONSISTS OF  
ALL THE PUBLIC LANDS IN THE COASTAL WATERS AND ADJACENT  
SEAS OF ALASKA CONSISTING OF ISLANDS, ISLETS, ROCKS, REEFS,  
CAPES AND SPIRES, AS WELL AS DESIGNATED MAINLAND AREAS

THERE MAY BE PRIVATE HOLDINGS WITHIN THE BOUNDARIES OF  
THE NATIONAL OR STATE RESERVATIONS SHOWN ON THIS MAP



CONTOUR INTERVAL 200 FEET  
DOTTED LINES REPRESENT 100-FOOT CONTOURS  
NATIONAL GEODETIC VERTICAL DATUM OF 1929  
BATHYMETRIC CONTOUR INTERVAL 10 METERS TO MAXIMUM DEPTH  
SUPPORTMENT BY 5 METER INTERVALS  
DATUM IS MEAN LOWER LOW WATER  
THE RELATIONSHIP BETWEEN THE TWO DATUMS IS VARIABLE  
SHORELINE SHOWN REPRESENTS THE APPROXIMATE LINE OF MEAN HIGH WATER

1985 MAGNETIC DECLINATION AT SOUTH EDGE OF SHEET VARIES FROM 23° TO 24°30' EAST  
FOR SALE BY THE U.S. GEOLOGICAL SURVEY, FAIRBANKS, ALASKA 99701, DENVER, COLORADO 80225  
OR RESTON, VIRGINIA 22082 AND BY NATIONAL OCEAN SERVICE, RIVERDALE, MARYLAND 20737  
A FOLDER DESCRIBING TOPOGRAPHIC MAPS AND SYMBOLS IS AVAILABLE UPON REQUEST



ROAD CLASSIFICATION

HEAVY DUTY ..... LIGHT DUTY .....  
UNIMPROVED DIRT .....  
STATE ROUTE

TYONEK, ALASKA

6150-A1-TB-290

1958

LIMITED REVISION 1985

USGS NMD HISTORICAL MAP