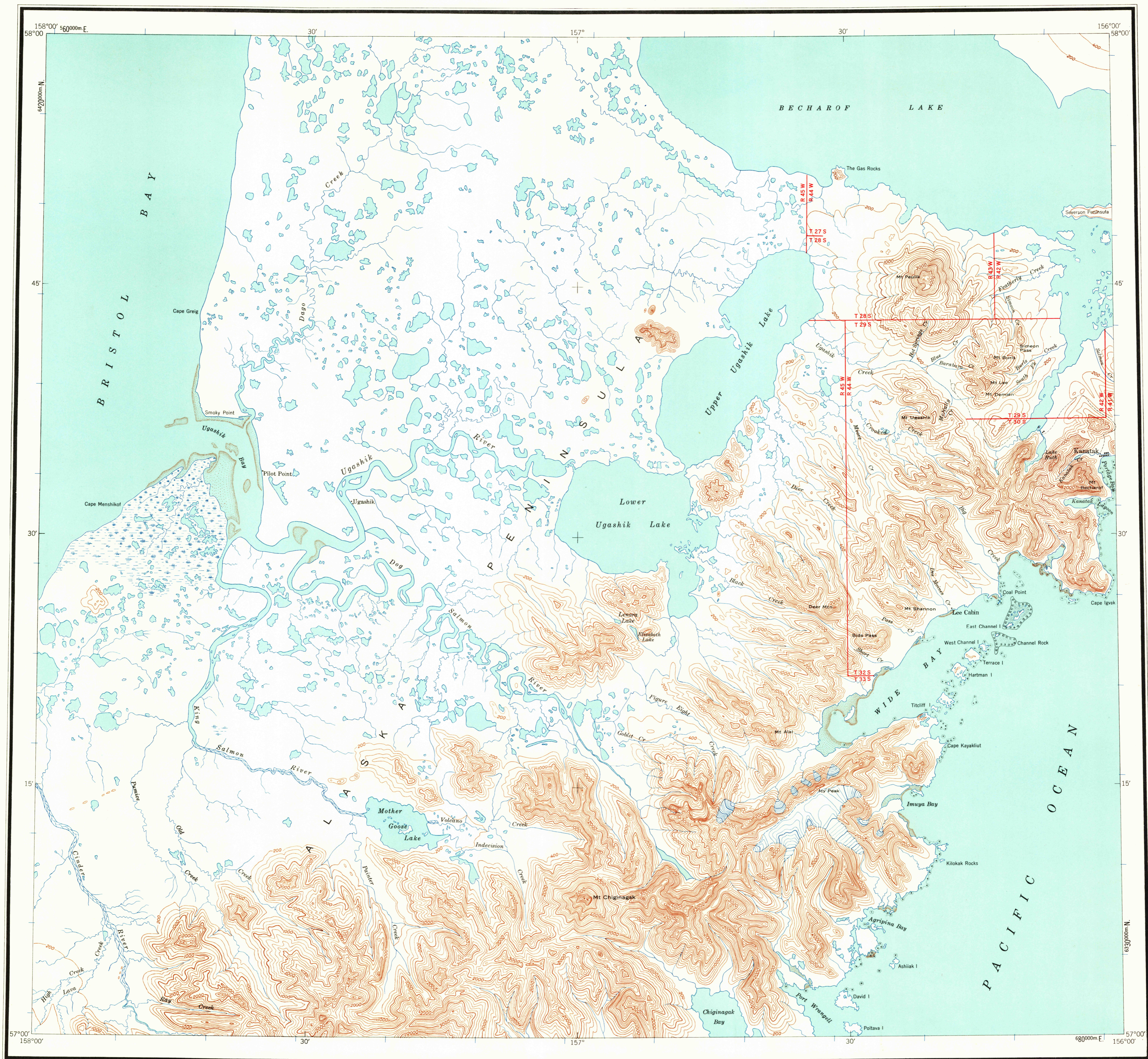
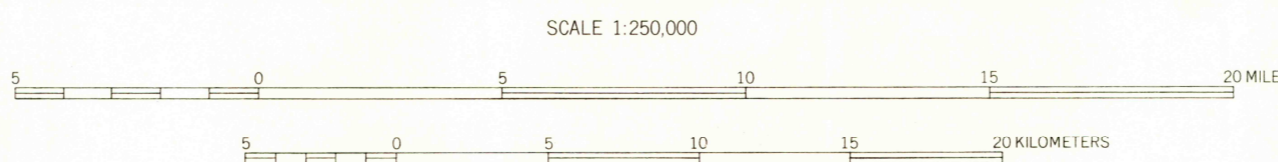
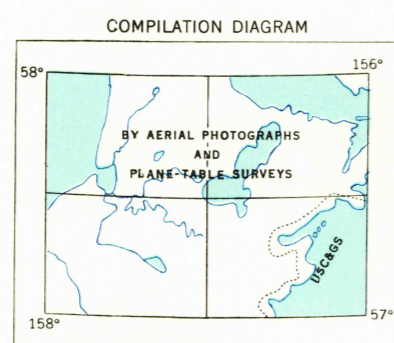


# UGASHIK

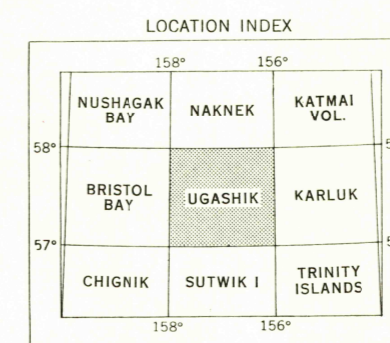


MAPPED, EDITED, AND PUBLISHED BY THE GEOLOGICAL SURVEY  
CONTROL BY USGS AND USCGS  
TOPOGRAPHY FROM AERIAL PHOTOGRAPHS BY PHOTO-ALIDADE METHODS  
AND PLANE-TABLE SURVEYS 1921-1922 AND 1925  
AERIAL PHOTOGRAPHS TAKEN MAY 1945  
POLYCONIC PROJECTION, 1927 NORTH AMERICAN DATUM  
10,000-METER UNIVERSAL TRANSVERSE MERCATOR GRID TICKS,  
ZONE 4, SHOWN IN BLUE



CONTOUR INTERVAL 200 FEET  
DATUM IS APPROXIMATELY MEAN SEA LEVEL  
1948 MAGNETIC DECLINATION AT SOUTH EDGE OF SHEET VARIES FROM 20°30' EAST TO 21°30' EAST

THIS MAP IS AVAILABLE WITH OR WITHOUT SHADED RELIEF OVERPRINT  
FOR SALE BY U.S. GEOLOGICAL SURVEY  
FAIRBANKS, ALASKA DENVER 25, COLORADO WASHINGTON 25, D. C.  
A FOLDER DESCRIBING TOPOGRAPHIC MAPS AND SYMBOLS IS AVAILABLE ON REQUEST



ROAD CLASSIFICATION  
ALL WEATHER ROADS DRY WEATHER ROADS  
HARD-SURFACE NONE IMPROVED DIRT NONE  
OTHER NONE UNIMPROVED DIRT NONE  
TRAILS

UGASHIK, ALASKA  
N5700-W15600/60x120  
1943

USGS  
Historical File  
Topographic Division

U.S.G.S.  
FILE COPY  
TOPOGRAPHIC DIVISION  
JAN 19 1944  
1455