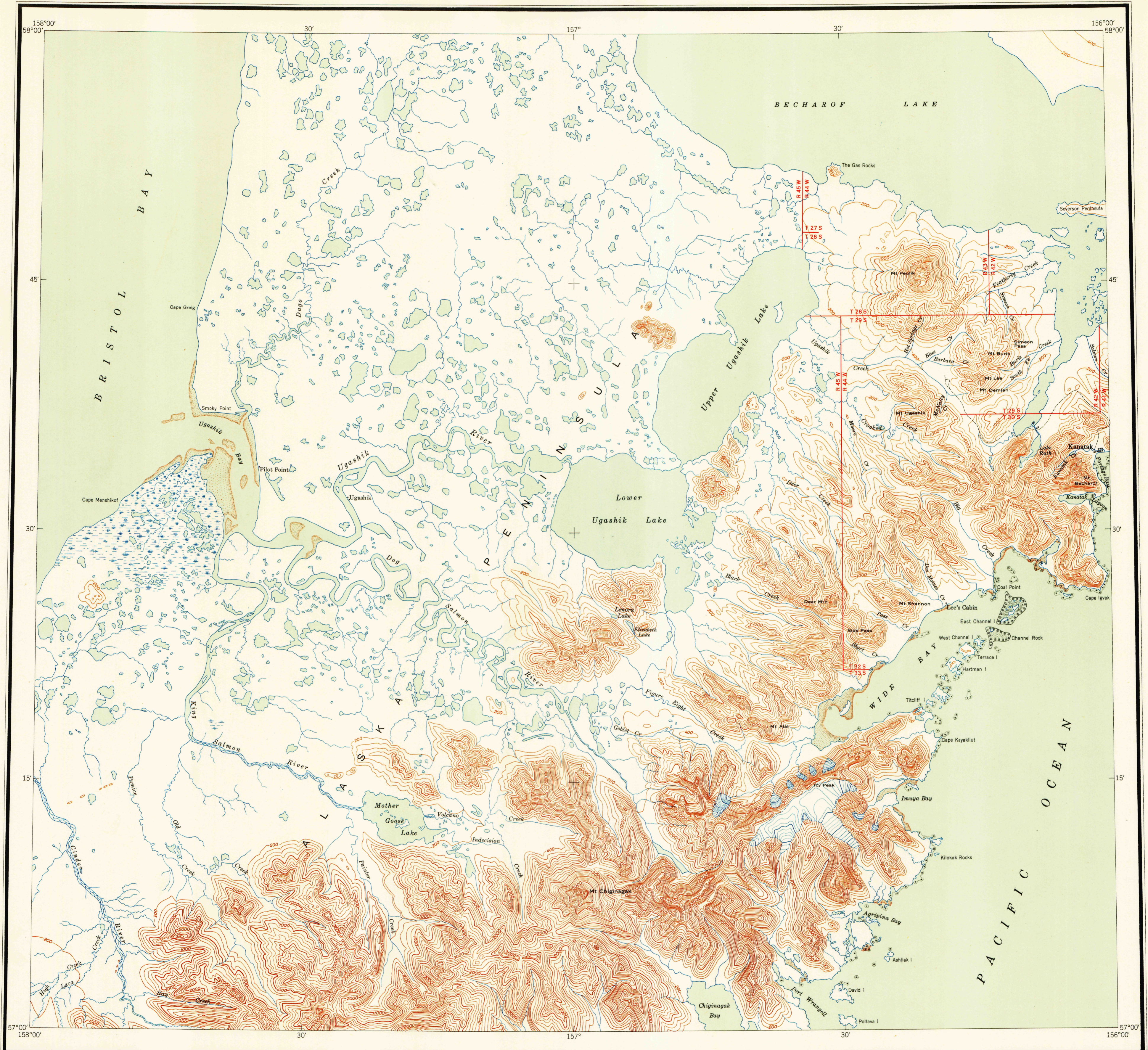
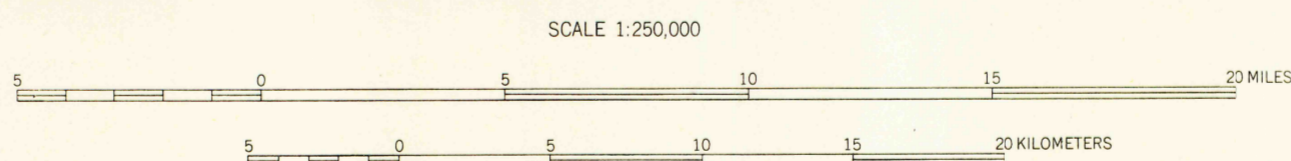
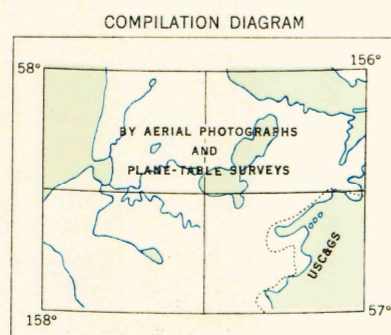


UGASHIK



MAPPED, EDITED, AND PUBLISHED BY THE GEOLOGICAL SURVEY
CONTROL BY USGS AND US&GS
TOPOGRAPHY FROM AERIAL PHOTOGRAPHS BY PHOTO-ALIDADE METHODS
AND PLANE-TABLE SURVEYS 1921-1922 AND 1925
AERIAL PHOTOGRAPHS TAKEN MAY 1943
POLYCONIC PROJECTION. 1927 NORTH AMERICAN DATUM



SCALE 1:250,000
CONTOUR INTERVAL 200 FEET
DATUM IS APPROXIMATELY MEAN SEA LEVEL
1948 MAGNETIC DECLINATION AT SOUTH EDGE OF SHEET VARIES FROM 20°30' EAST TO 21°30' EAST
THIS MAP IS AVAILABLE IN BOTH SHADED RELIEF AND CONTOUR EDITIONS
FOR SALE BY U. S. GEOLOGICAL SURVEY, WASHINGTON 25, D. C.

LOCATION INDEX

	158°	156°	
NUSHAGAK BAY	NAKNEK	KATWAI VOL.	
BRISTOL BAY	UGASHIK	KARLUK	
CRIGNIK	SUTWIK I	TRINITY ISLANDS	
	158°	156°	

ROAD CLASSIFICATION
ALL WEATHER ROADS DRY WEATHER ROADS
HARD-SURFACE NONE IMPROVED DIRT NONE
OTHER NONE UNIMPROVED DIRT NONE
TRAILS NONE

UGASHIK, ALASKA
N5700-W15600/60X120
EDITION OF 1949

*United States Topo. 1:250,000.
Sheet Ugashik, 1949.
cop-1.*

