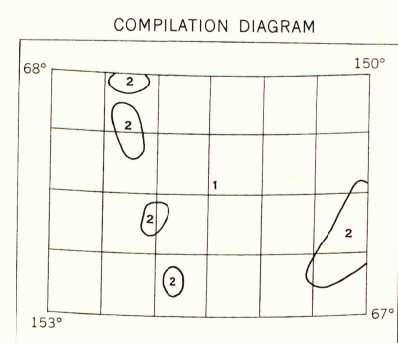
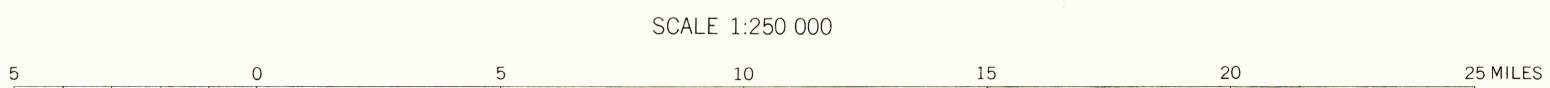


MAPPED, EDITED, AND PUBLISHED BY THE GEOLOGICAL SURVEY IN COOPERATION WITH THE DEPARTMENT OF THE NAVY, NAVAL PETROLEUM RESERVE

CONTROL BY USAF
CULTURE AND DRAINAGE IN PART COMPILED FROM TRIMETROGON PHOTOGRAPHY 1944-1949. TOPOGRAPHY COMPILED FROM ORIGINAL SURVEYS OF THE GEOLOGICAL SURVEY 1899-1930, SUPPLEMENTED BY STEREOPHOTOGRAMMETRIC (PHOTOALTIMETER) COMPILATION, 1945
UNIVERSAL TRANSVERSE MERCATOR PROJECTION, ZONE 5
ASTRONOMICAL DATUM



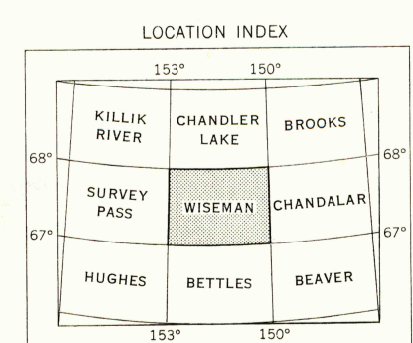
- 1 TOPOGRAPHY FROM PHOTOALTIMETER COMPILATION ADJUSTED TO TRIMETROGON BASE
- 2 TOPOGRAPHY FROM ALASKA MAP 47 AND USGS FIELD SHEET KOYUKUK RIVER ADJUSTED TO TRIMETROGON BASE



CONTOUR INTERVALS 200 AND 1000 FEET
AREAS NOT SURVEYED IN DETAIL INDICATED BY BROKEN LINES
DATUM IS MEAN SEA LEVEL

1951 MAGNETIC DECLINATION AT SOUTH EDGE OF SHEET VARIES FROM 27°30' TO 30°00' EAST

FOR SALE BY U. S. GEOLOGICAL SURVEY, FEDERAL CENTER, DENVER, COLORADO OR WASHINGTON 25, D. C.
A FOLDER DESCRIBING TOPOGRAPHIC MAPS AND SYMBOLS IS AVAILABLE ON REQUEST



ROAD CLASSIFICATION

ALL WEATHER ROADS	DRY WEATHER ROADS
HARD SURFACE	IMPROVED DIRT
OTHER	UNIMPROVED DIRT
	TRAILS

WISEMAN, ALASKA
N6700-W15000/60X180

1951

*United States Topo. 1:250,000.
Sheet Wiseman, 1957
copy 1.*