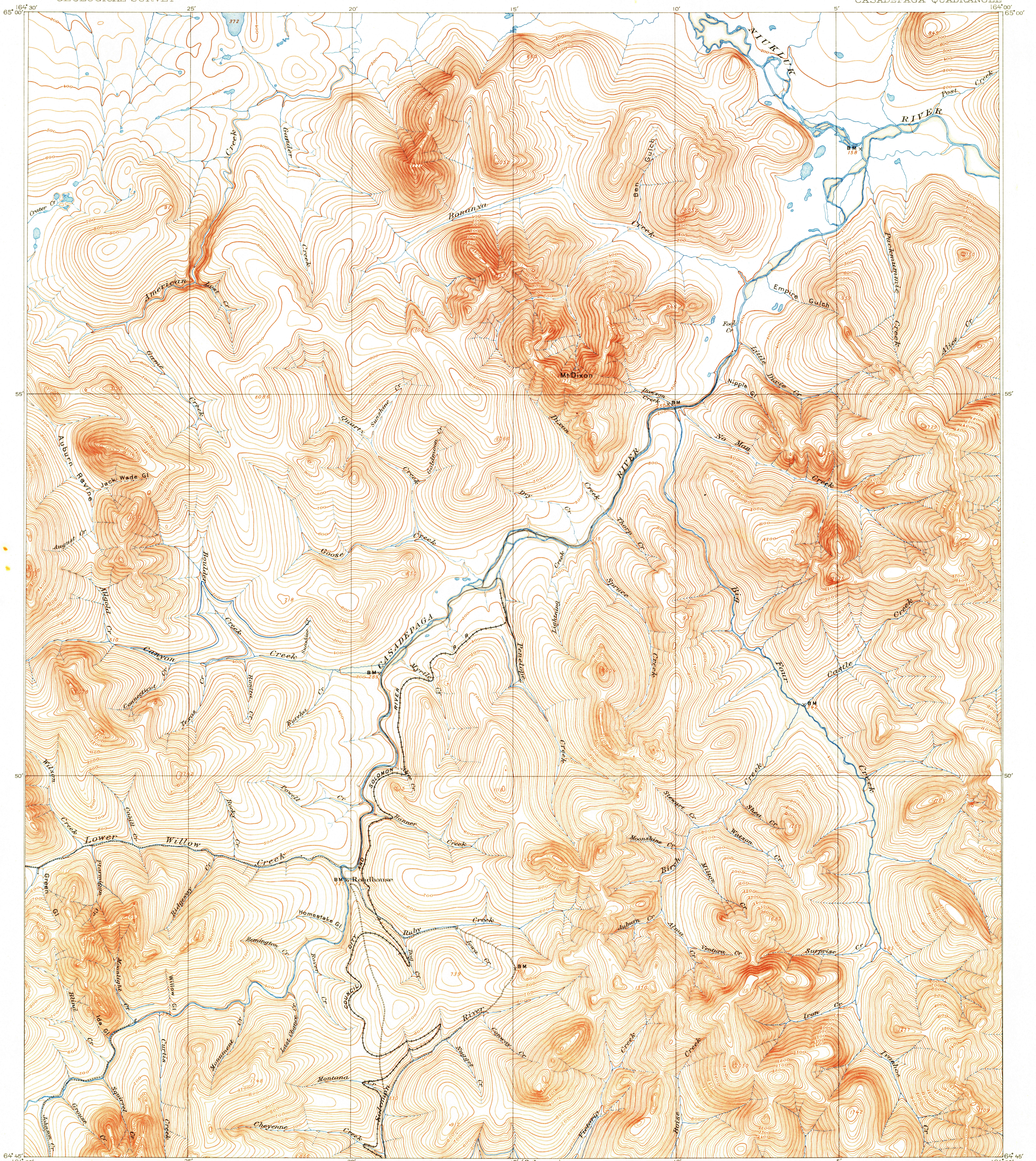


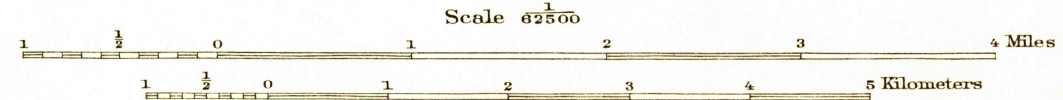
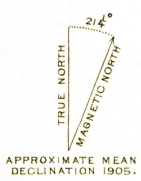
U.S.G.S.
FILE COPY
Inspection and Editing

UNITED STATES
DEPARTMENT OF THE INTERIOR
GEOLOGICAL SURVEY

ALASKA
CASADEPAGA QUADRANGLE



Alfred H. Brooks, Geologist in charge.
Topography by T.G. Gardine, W.B. Corse, and B.A. Yocum.
Control by Coast and Geodetic Survey.
Surveyed in 1905.



Contour interval 25 feet.
Datum is mean sea level.

U.S.G.S.
FILE COPY
Inspection and Editing

ALASKA
CASADEPAGA
USGS
Historical File
Topographic Division

DEC 4 1953